

NLX - Next Lighting eXperience

Light Study of an Outside Tennis Court with Simple TWEENER® CE

Results provided in this study take into account precise calculations based on a perfectly defined distribution of the luminaires in relation to the surface considered. In practice, the results may vary according to the tolerance of the lamps, luminaires, their position and adjustment, reflection factors and power supply.

Study includes 2 calculation grids :

- French Federation Grid – 15 measuring points at 1 m
- ITF grid - 65 measuring points on the ground

Site internet NLX: www.nlx.fr

Date: 28.05.2021
Operator: FC

NLX- Next Lighting eXperience

Aérodrome du Breuil
41330 LA CHAPELLE-VENDÔMOISEOperator FC
Telephone
Fax
e-Mail

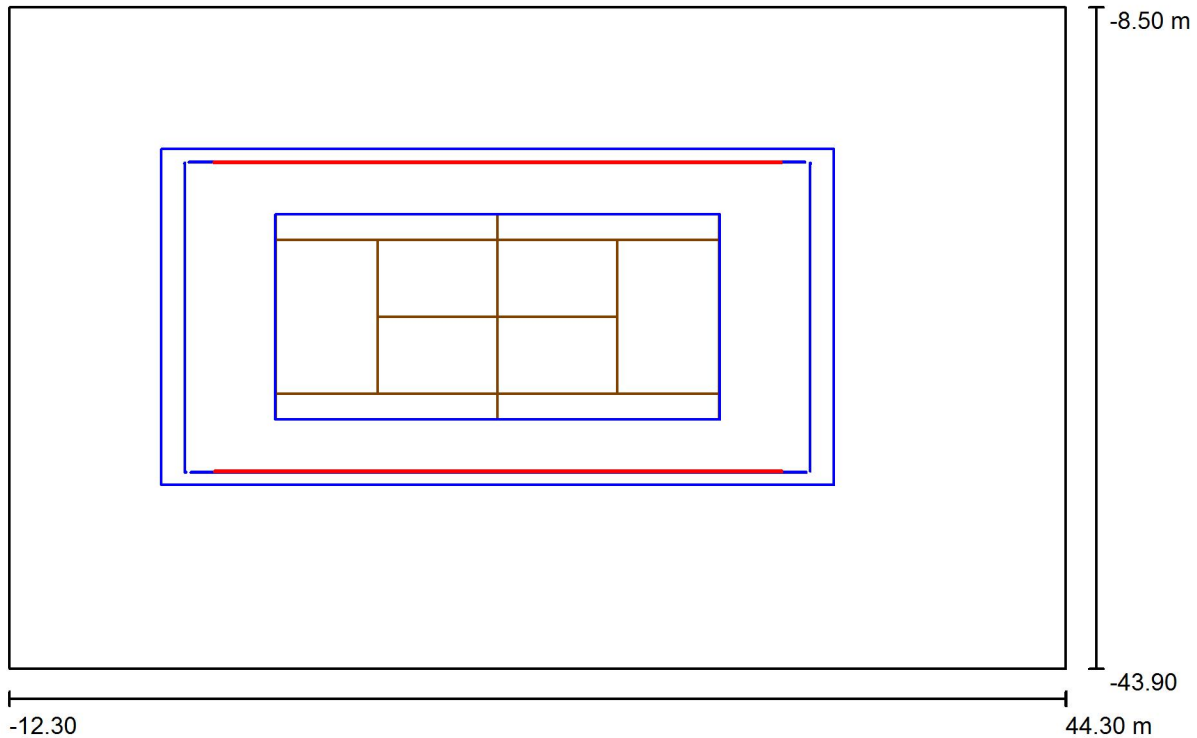
Table of contents

NLX - Next Lighting eXperience	
Project Cover	1
Table of contents	2
TWS - CE - WITH WINDBREAK 85% 4 sides Full Height	
Planning data	3
3D Rendering	4
False Colour Rendering	5
Exterior Surfaces	
Sol	
Surface 1	
Isolines (E)	6
Tennis 36 m x 18 m - Maillage FFT - Après 2016 v2	
Value Chart (E, Perpendicular)	7
Calculation grid - Court 4	
Value Chart (E, Perpendicular)	8

NLX- Next Lighting eXperience
 Aérodrome du Breuil
 41330 LA CHAPELLE-VENDÔMOISE

Operator FC
 Telephone
 Fax
 e-Mail

TWS - CE - WITH WINDBREAK 85% 4 sides Full Height / Planning data



Maintenance factor: 1.00, ULR (Upward Light Ratio): 6.0%

Scale 1:405

Double Tweener CE
 20 LED bars
 On each side of the court:
 8 LONG bars of 3.8m
 and 2 SHORT bars of 0.95m

Installation height 2.55m

(...)

Luminaire Parts List

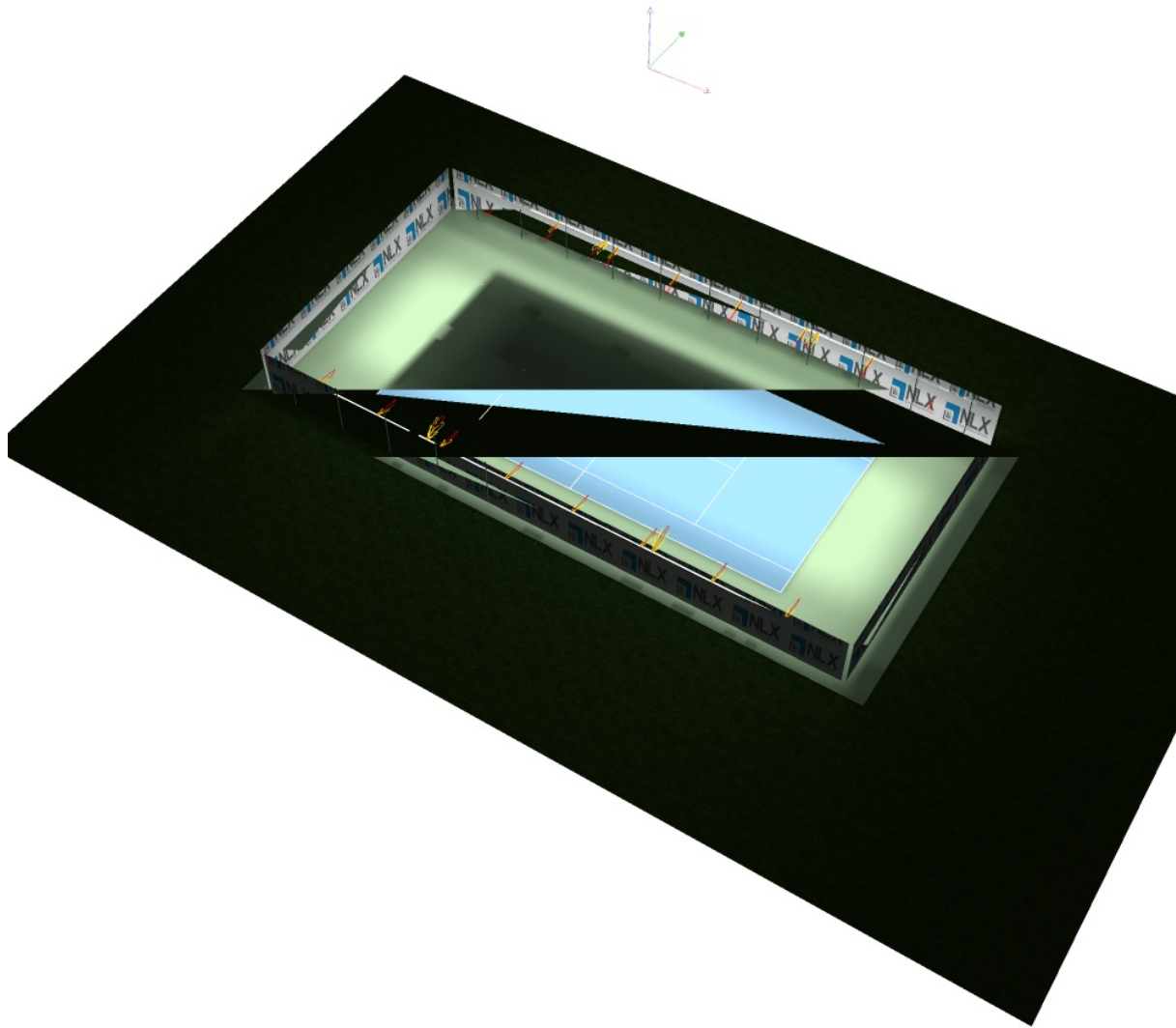
No.	Pieces	Designation (Correction Factor)	Φ (Luminaire) [lm]	Φ (Lamps) [lm]	P [W]
1	4	NLX BARRE COURTE TWS - L.0.95m - CE (1.000)	2404	2404	23.0
2	16	NLX BARRE LONGUE TWS - L.3.8m - CE (1.000)	10821	10819	92.0
Total:			182759	Total: 182720	1564.0

NLX- Next Lighting eXperience

Aérodrome du Breuil
41330 LA CHAPELLE-VENDÔMOISE

Operator FC
Telephone
Fax
e-Mail

TWS - CE - WITH WINDBREAK 85% 4 sides Full Height / 3D Rendering

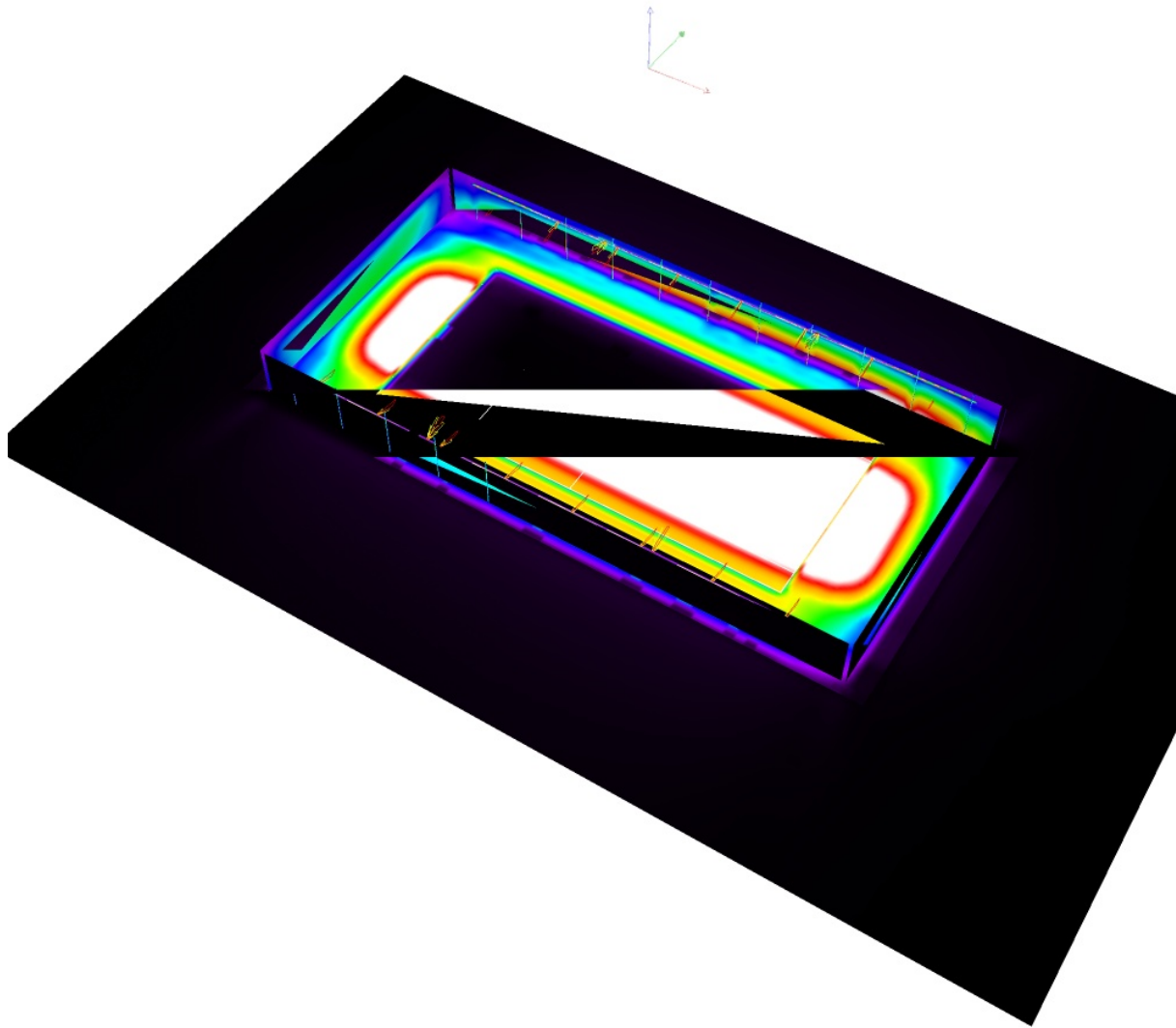


NLX- Next Lighting eXperience

Aérodrome du Breuil
41330 LA CHAPELLE-VENDÔMOISE

Operator FC
Telephone
Fax
e-Mail

TWS - CE - WITH WINDBREAK 85% 4 sides Full Height / False Colour Rendering

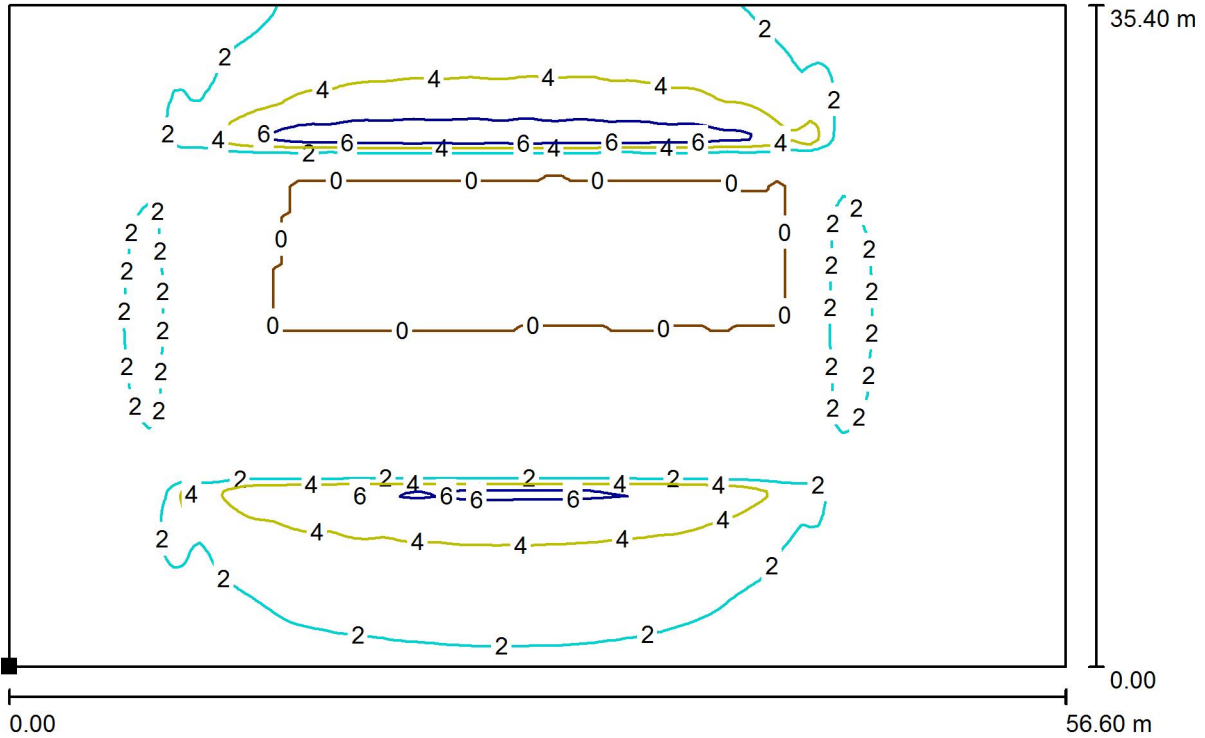


0 37.50 75 112.50 150 187.50 225 262.50 300 lx

NLX- Next Lighting eXperience
 Aérodrome du Breuil
 41330 LA CHAPELLE-VENDÔMOISE

Operator FC
 Telephone
 Fax
 e-Mail

TWS - CE - WITH WINDBREAK 85% 4 sides Full Height / Sol / Surface 1 / Isolines (E)



Values in Lux, Scale 1 : 405

Position of surface in external scene:
 Marked point:
 (-12.300 m, -43.900 m, 0.000 m)



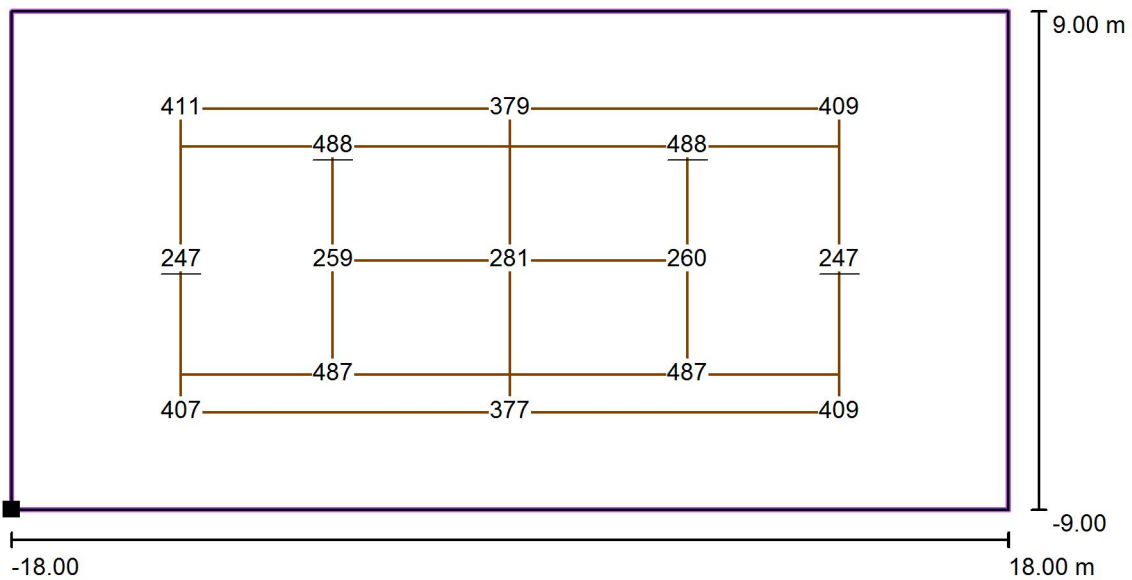
Grid: 128 x 128 Points

E_{av} [lx]	E_{min} [lx]	E_{max} [lx]	u0	E_{min} / E_{max}
1.32	0.00	7.66	0.000	0.000

NLX- Next Lighting eXperience
 Aérodrome du Breuil
 41330 LA CHAPELLE-VENDÔMOISE

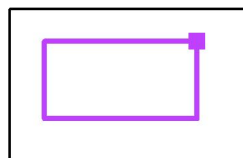
Operator FC
 Telephone
 Fax
 e-Mail

**TWS - CE - WITH WINDBREAK 85% 4 sides Full Height / Tennis 36 m x 18 m - Maillage
 FFT - Après 2016 v2 / Value Chart (E, Perpendicular)**



Values in Lux, Scale 1 : 273

Position of surface in external scene:
 Marked point: (31.864 m, -16.079 m,
 0.005 m)



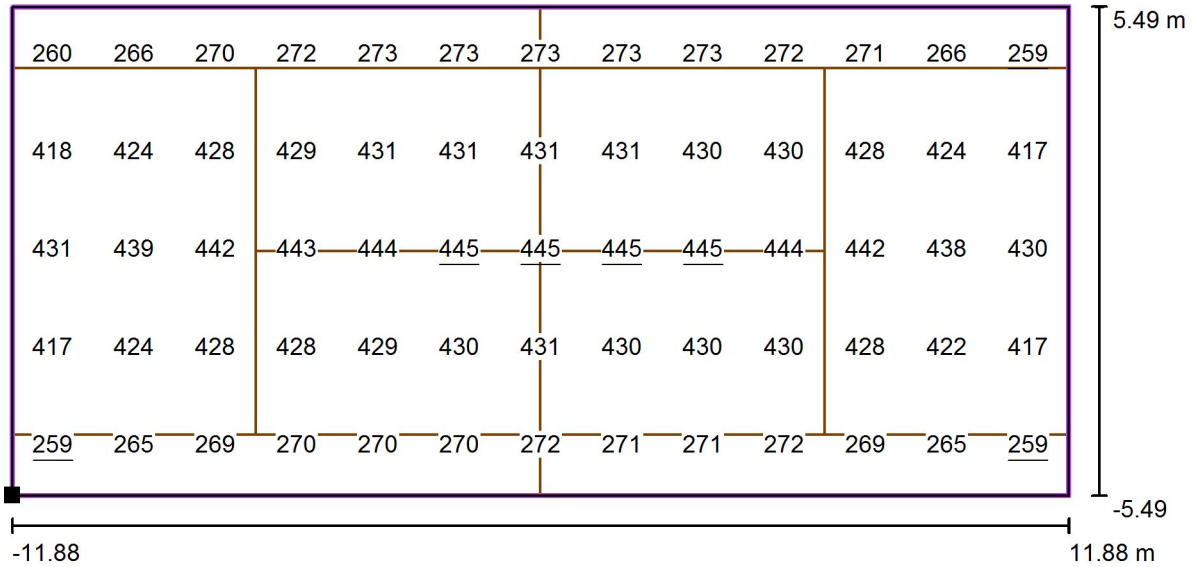
Grid: 15 Points

E_{av} [lx]	E_{min} [lx]	E_{max} [lx]	u0	E_{min} / E_{max}
376	247	488	0.66	0.51

NLX- Next Lighting eXperience
 Aérodrome du Breuil
 41330 LA CHAPELLE-VENDÔMOISE

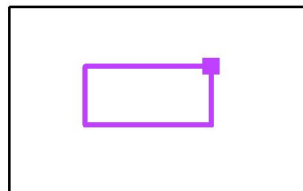
Operator FC
 Telephone
 Fax
 e-Mail

TWS - CE - WITH WINDBREAK 85% 4 sides Full Height / Calculation grid - Court 4 / Value Chart (E, Perpendicular)



Values in Lux, Scale 1 : 170

Position of surface in external scene:
 Marked point: (25.749 m, -19.594 m, 0.005 m)



Grid: 13 x 5 Points

E_{av} [lx]	E_{min} [lx]	E_{max} [lx]	u0	E_{min} / E_{max}
366	259	445	0.71	0.58