

NLX - Next Lighting eXperience

Light Study of an Outside Tennis Court with Double TWEENER® CE

Results provided in this study take into account precise calculations based on a perfectly defined distribution of the luminaires in relation to the surface considered. In practice, the results may vary according to the tolerance of the lamps, luminaires, their position and adjustment, reflection factors and power supply.

Study includes 2 calculation grids :

- French Federation Grid – 15 measuring points at 1 m
- ITF grid - 65 measuring points on the ground

Site internet NLX: www.nlx.fr

Date: 09.06.2021
Operator: FC



NLX- Next Lighting eXperience

Aérodrome du Breuil
41330 LA CHAPELLE-VENDÔMOISE

Operator FC
Telephone
Fax
e-Mail

Table of contents

NLX - Next Lighting eXperience

Project Cover	1
Table of contents	2
TWEENER DOUBLE - CE - WINDBREAK 85% FULL HEIGHT FOR ISOLINE ON LONG...	
Planning data	3
3D Rendering	4
False Colour Rendering	5
Exterior Surfaces	
Sol	
Surface 1	
Isolines (E)	6
Calculation grid - Court 1	
Value Chart (E, Perpendicular)	7
Calculation grid - Court 2	
Value Chart (E, Perpendicular)	8
Calculation grid - Court 3	
Value Chart (E, Perpendicular)	9

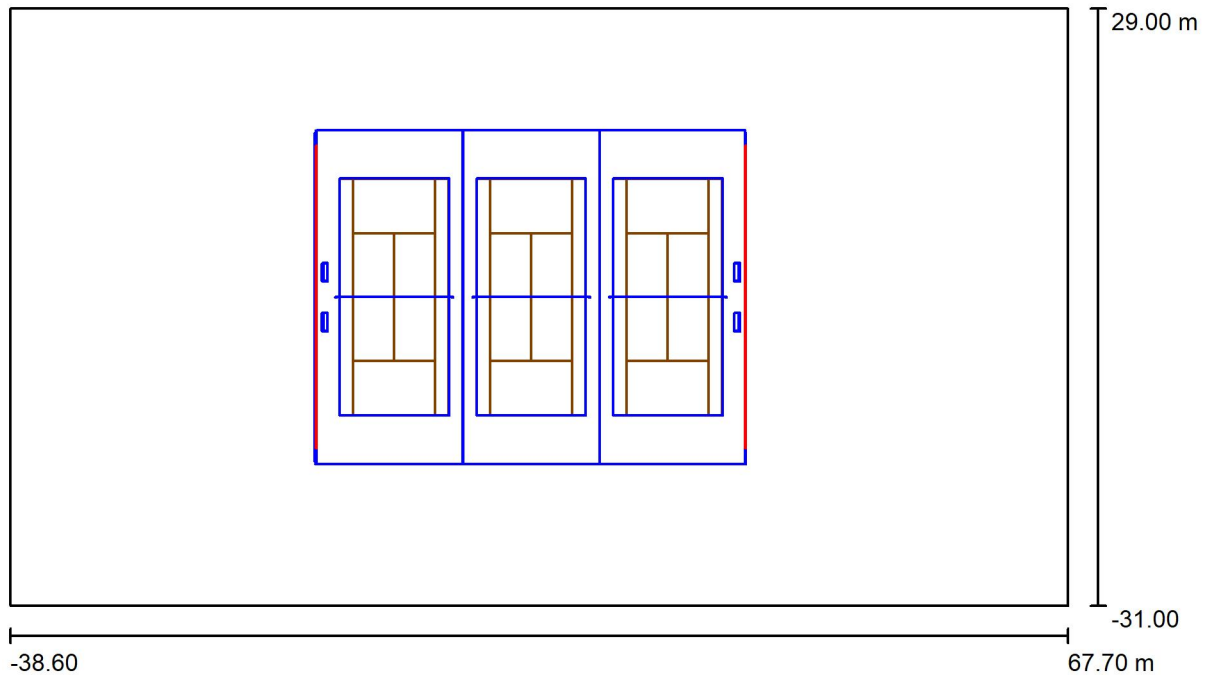


NLX- Next Lighting eXperience

Operator FC
Telephone
Fax
e-Mail

Aérodrome du Breuil
41330 LA CHAPELLE-VENDÔMOISE

TWEENER DOUBLE - CE - WINDBREAK 85% FULL HEIGHT FOR ISOLINE ON LONG SIDES / Planning data



Maintenance factor: 1.00, ULR (Upward Light Ratio): 17.5%

Scale 1:760

Double Tweener CE

20 LED bars

On each side of the court:

8 LONG bars of 3.8m

and 2 SHORT bars of 0.95m

Installation height 3m

(...)

Luminaire Parts List

No.	Pieces	Designation (Correction Factor)	Φ (Luminaire) [lm]	Φ (Lamps) [lm]	P [W]
1	4	NLX BARRE COURTE TWD - L.0.95m - CE (1.000)	4809	4808	46.1
2	16	NLX BARRE LONGUE TWD - L.3.8m - CE (1.000)	21196	21191	184.3
Total:			358376	358288	3133.4

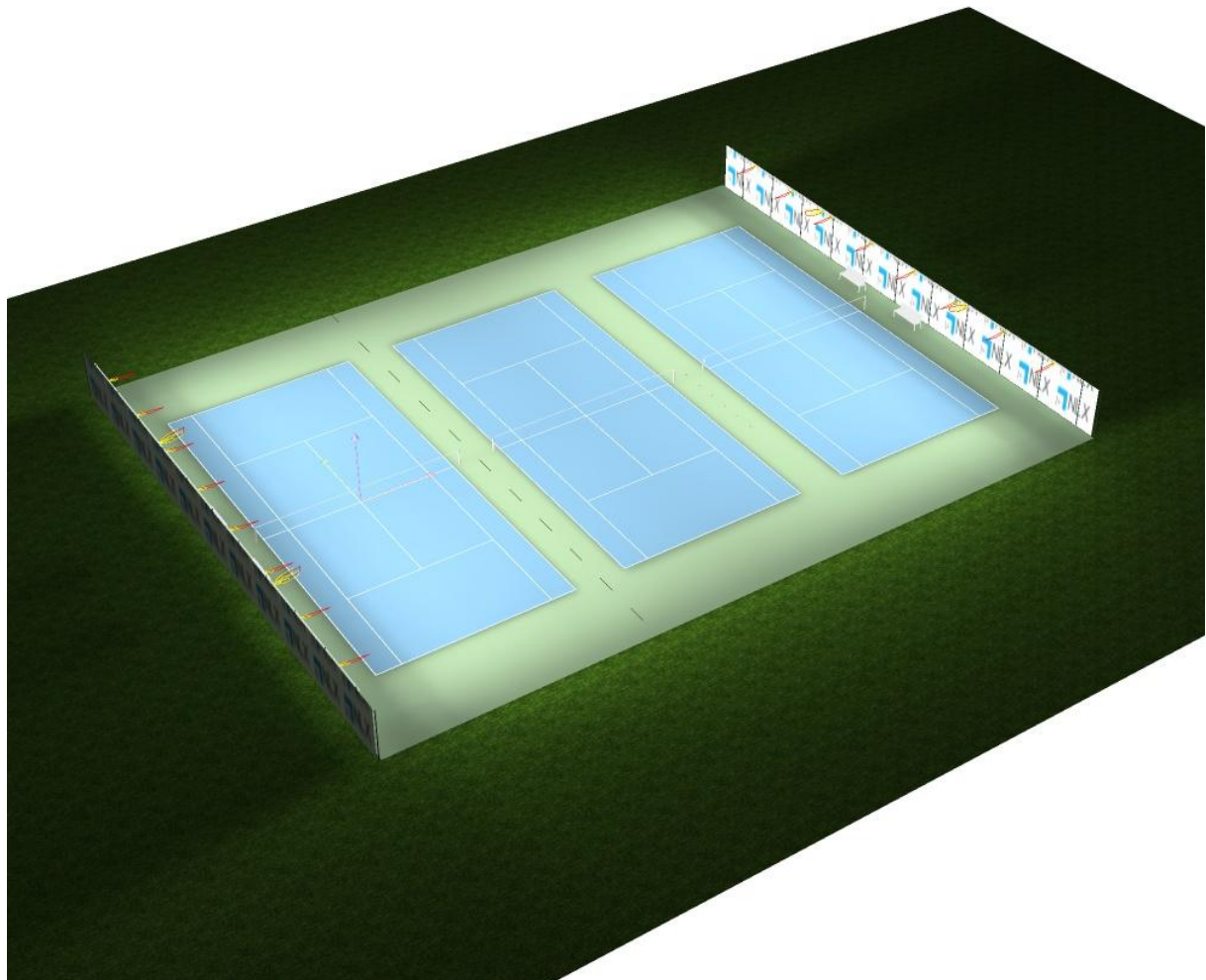


NLX- Next Lighting eXperience

Aérodrome du Breuil
41330 LA CHAPELLE-VENDÔMOISE

Operator FC
Telephone
Fax
e-Mail

TWEENER DOUBLE - CE - WINDBREAK 85% FULL HEIGHT FOR ISOLINE ON LONG SIDES / 3D Rendering



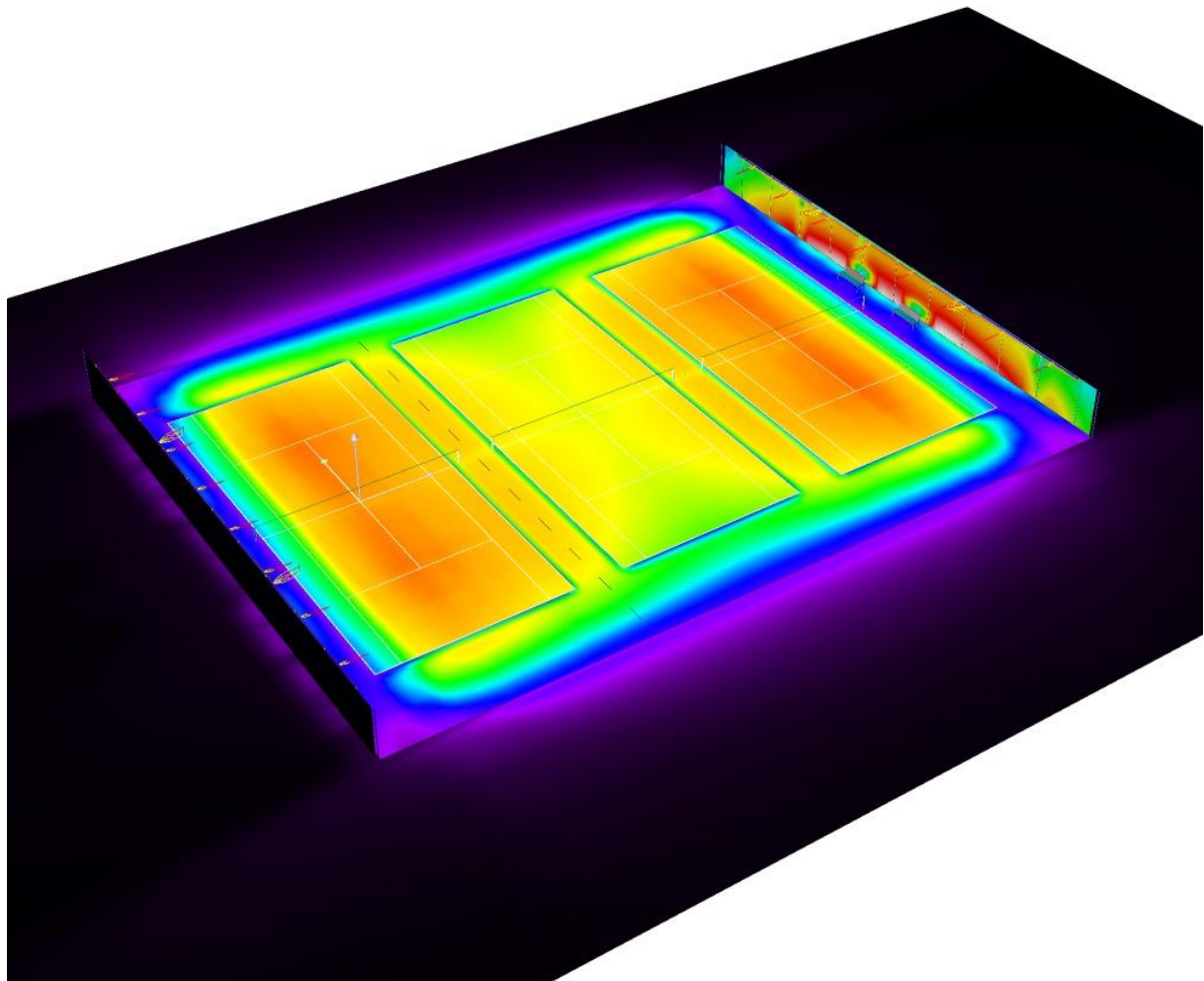


NLX- Next Lighting eXperience

Aérodrome du Breuil
41330 LA CHAPELLE-VENDÔMOISE

Operator FC
Telephone
Fax
e-Mail

TWEENER DOUBLE - CE - WINDBREAK 85% FULL HEIGHT FOR ISOLINE ON LONG SIDES / False Colour Rendering



0 37.50 75 112.50 150 187.50 225 262.50 300 lx

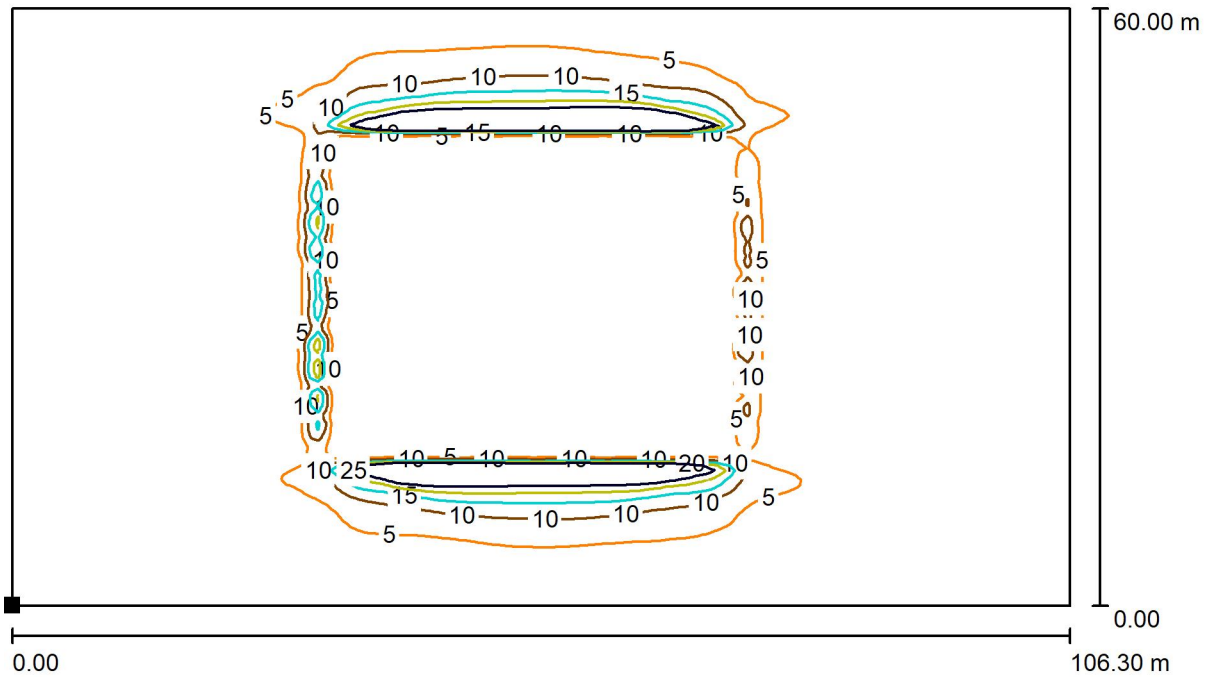


NLX- Next Lighting eXperience

Operator FC
 Telephone
 Fax
 e-Mail

Aérodrome du Breuil
 41330 LA CHAPELLE-VENDÔMOISE

TWEENER DOUBLE - CE - WINDBREAK 85% FULL HEIGHT FOR ISOLINE ON LONG SIDES / Sol / Surface 1 / Isolines (E)



Values in Lux, Scale 1 : 760

Position of surface in external scene:
 Marked point:
 (-38.600 m, -31.000 m, 0.000 m)



Grid: 128 x 128 Points

E_{av} [lx]	E_{min} [lx]	E_{max} [lx]	u0	E_{min} / E_{max}
3.11	0.00	57	0.000	0.000

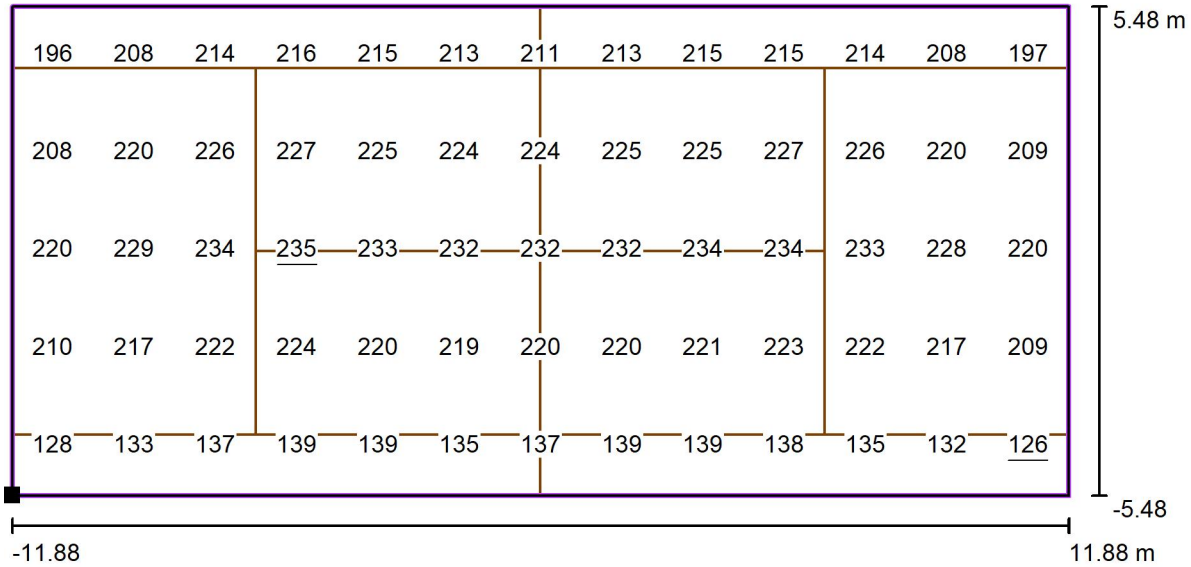


NLX- Next Lighting eXperience

Operator FC
 Telephone
 Fax
 e-Mail

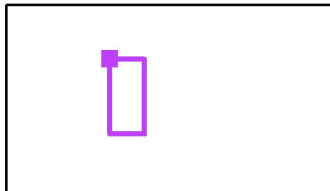
Aérodrome du Breuil
 41330 LA CHAPELLE-VENDÔMOISE

TWEENER DOUBLE - CE - WINDBREAK 85% FULL HEIGHT FOR ISOLINE ON LONG SIDES / Calculation grid - Court 1 / Value Chart (E, Perpendicular)



Values in Lux, Scale 1 : 170

Position of surface in external scene:
 Marked point: (-5.485 m, 11.885 m, 0.003 m)



Grid: 13 x 5 Points

E_{av} [lx]
203

E_{min} [lx]
126

E_{max} [lx]
235

u_0
0.62

E_{min} / E_{max}
0.54

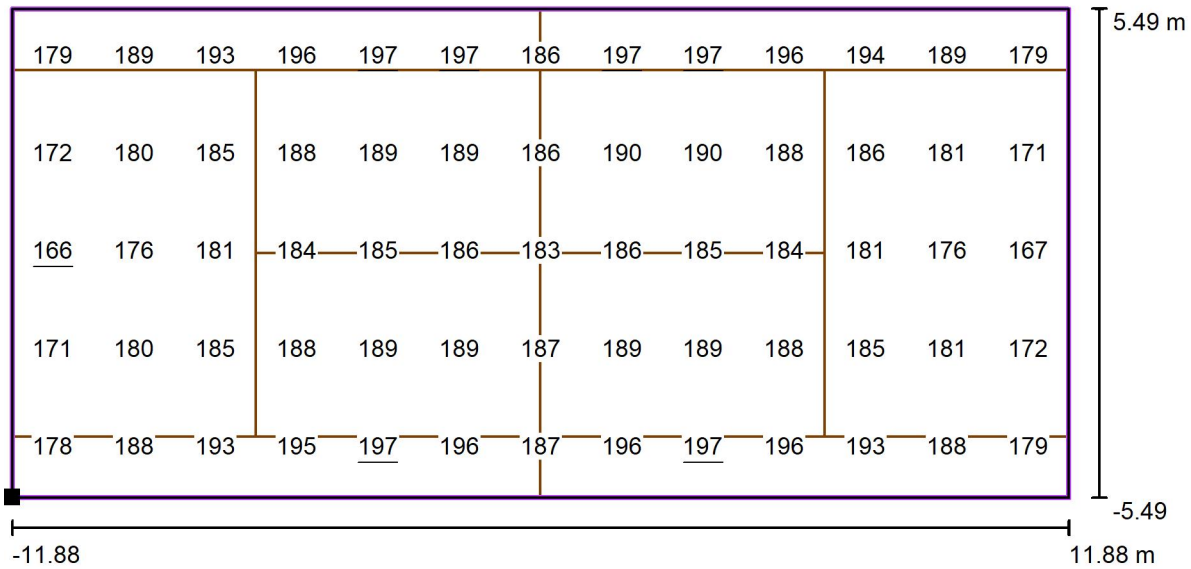


NLX- Next Lighting eXperience

Operator FC
 Telephone
 Fax
 e-Mail

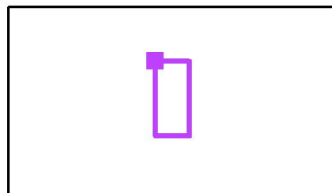
Aérodrome du Breuil
 41330 LA CHAPELLE-VENDÔMOISE

TWEENER DOUBLE - CE - WINDBREAK 85% FULL HEIGHT FOR ISOLINE ON LONG SIDES / Calculation grid - Court 2 / Value Chart (E, Perpendicular)



Values in Lux, Scale 1 : 170

Position of surface in external scene:
 Marked point: (8.295 m, 11.885 m, 0.003 m)



Grid: 13 x 5 Points

E_{av} [lx]
186

E_{min} [lx]
166

E_{max} [lx]
197

u_0
0.89

E_{min} / E_{max}
0.84

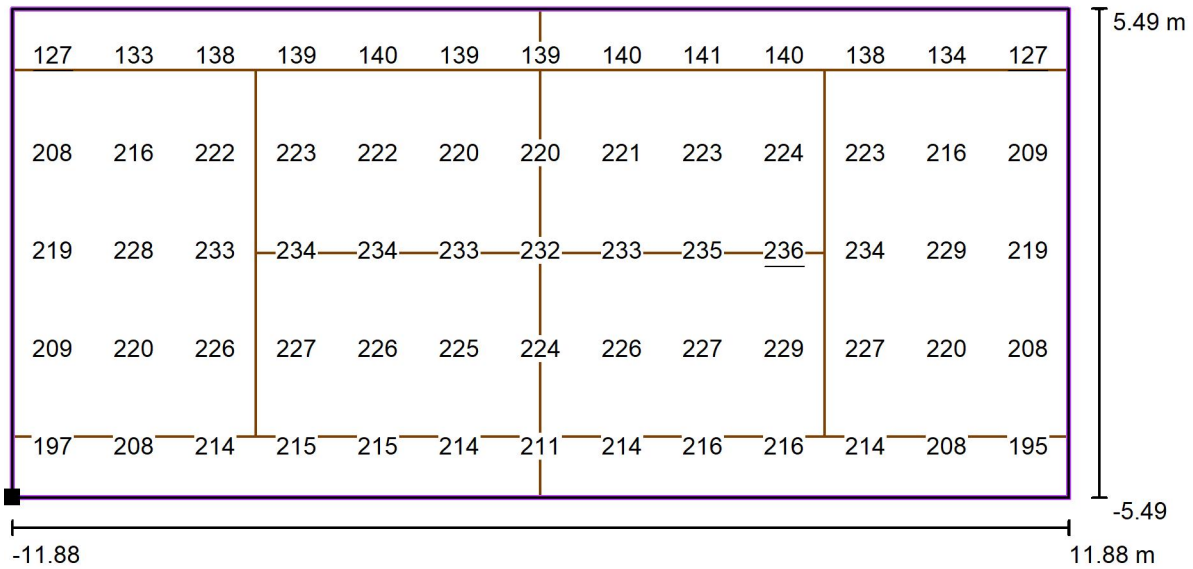


NLX- Next Lighting eXperience

Operator FC
 Telephone
 Fax
 e-Mail

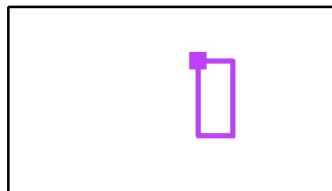
Aérodrome du Breuil
 41330 LA CHAPELLE-VENDÔMOISE

TWEENER DOUBLE - CE - WINDBREAK 85% FULL HEIGHT FOR ISOLINE ON LONG SIDES / Calculation grid - Court 3 / Value Chart (E, Perpendicular)



Values in Lux, Scale 1 : 170

Position of surface in external scene:
 Marked point: (22.015 m, 11.891 m, 0.003 m)



Grid: 13 x 5 Points

E_{av} [lx]
204

E_{min} [lx]
127

E_{max} [lx]
236

u_0
0.62

E_{min} / E_{max}
0.54