



Blairgowrie Tennis Club

Safeguarding Policy including Code of Conduct and Reporting Procedure

CONTENTS

POLICY STATEMENT AND SCOPE	2
POLICY PRINCIPLES	2
RESPONSIBILITY FOR SAFEGUARDING.....	3
POLICY AIMS	3
DEFINITIONS	4
RECRUITMENT	4
TRAINING.....	4
CODE OF CONDUCT.....	4
TRANSPORTATION	4
SUPERVISING CHILDREN	5
POSITIONS OF TRUST	5
TYPES OF ABUSE	6
INCREASED VULNERABILITY TO ABUSE	6
LOW LEVEL CONCERNS	7
RESPONDING TO A SAFEGUARDING CONCERN OR ALLEGATION.....	8
RESPONDING TO A DISCLOSURE OF ABUSE.....	8
MAKING SAFEGUARDING PERSONAL	9
MENTAL CAPACITY	9
CONFIDENTIALITY	10
INFORMATION SHARING AND RETENTION	10
WHISTLEBLOWING.....	11
RELATED POLICIES.....	12
APPENDIX A: REPORTING A SAFEGUARDING CONCERN THAT OCCURS WITHIN TENNIS	13
APPENDIX B: REPORTING A SAFEGUARDING CONCERN THAT HAPPENS OUTSIDE OF TENNIS.....	14
APPENDIX C: DEFINITIONS	15
APPENDIX D – CODES OF CONDUCT.....	20
APPENDIX E: LEGISLATION, GUIDANCE AND REGULATIONS.....	22
APPENDIX F: ADDITIONAL INFORMATION AND SUPPORT.....	23
HOW YOU CAN GET IN TOUCH.....	24
REVISION CONTROL/CHANGE HISTORY	24

Policy Statement and Scope

Blairgowrie Tennis Club recognises our moral and statutory responsibility to safeguard and promote the welfare of all children (anyone under 18) and adults at risk. We are committed to ensuring our safeguarding practice reflects statutory responsibilities, government guidance and LTA safeguarding standards, which can be found here: <https://www.lta.org.uk/about-us/safeguarding/venue-standards/>.

We are committed to prioritising the well-being of children/adults at risk and providing a safe and welcoming environment where they are respected and valued. We are alert to the signs of abuse and neglect and follow our procedures to ensure that children/adults at risk receive effective support and protection.

We recognise that health, well-being, ability, disability and need for care and support can affect a person's resilience. We recognise that some people experience barriers, eg to communication in raising concerns or seeking help. We recognise that these factors can vary at different points in people's lives.

We recognise that there is a legal framework within which sport needs to work to safeguard adults at risk and will act in accordance with the relevant safeguarding adult legislation and with local statutory safeguarding procedures.

Actions taken by us will be consistent with the principles of adult safeguarding ensuring that any action taken is prompt, proportionate and that it includes and respects the voice of the adult concerned.

This policy applies to any person who plays, coaches, officiates, works, volunteers, or otherwise participates (or visits) at our venue.

We expect contractors and partner organisations, including for example, suppliers and sponsors to adopt and demonstrate their commitment to the principles and practice as set out in this policy and associated procedures.

All bound by this policy are responsible for upholding high standards of conduct and professionalism and raising safeguarding concerns and allegations in accordance with the Reporting a Safeguarding Concern Procedures.

Policy Principles

- The safety and welfare of children/adults at risk is paramount
- All children/adults at risk, regardless of age, disability, gender reassignment, race, religion or belief, sex, or sexual orientation have an equal right to protection from all types of harm or abuse
- Safeguarding is everybody's responsibility
- All safeguarding concerns or allegations will be taken seriously and responded to swiftly and appropriately
- We strive to create a culture and environment where everyone is empowered to protect themselves and others and feel able to raise concerns
- We actively promote working together to ensure all children/adults at risk are safeguarded.

Responsibility for Safeguarding

The Committee has overall accountability for this policy and its implementation.

We have an appointed Club Welfare Officer (CWO) who holds operational responsibility for safeguarding in line with the LTA role profile who is supported by the Committee. The CWO is the first point of contact to raise a safeguarding concern involving a child/adult at risk. They also play a proactive role in increasing awareness of safeguarding within our venue.

The Club Welfare Officers are:

Aine Fitzgerald / Sandi MacDougall

Club Welfare Officer

07444 017941

WelfareOfficeBTC@gmail.com

This email is accessed ONLY by the Club Welfare Officer and all communication is treated in the strictest confidence.

If the Club Welfare Officer is not available to report a safeguarding concern or allegation to, the alternative contact within our venue is:

Ailsa Smith

Deputy Club Welfare Officer

07891 107177

WelfareOfficeBTC@gmail.com

The LTA Safeguarding Team has strategic and operational responsibility for safeguarding in tennis in Britain, including the monitoring and evaluation of safeguarding standards and investigating safeguarding concerns. Safeguarding concerns can be raised directly to the LTA Safeguarding Team via

<https://safeguardingconcern.lta.org.uk/>

The Local Authority contact details are:

Child Protection and Duty Team: 01738 476768

Adult Support and Protection Services: 0345 301 11 20

All bound by this policy are responsible for raising safeguarding concerns in accordance with the 'Reporting a Safeguarding Concern' procedure (see [Appendix A](#) and [Appendix B](#)).

Policy Aims

The purpose of this policy is to:

- Protect children (including children of adults who use our services) and adults at risk from harm
- Provide the necessary information to enable people to meet their safeguarding responsibilities
- Deliver good practice and high safeguarding standards
- Outline our commitment to safeguarding children/adults at risk

Definitions

Child: anyone under the age of 18.

Parent: birth parents and other adults who are in a parenting role.

Adult at risk:

Scotland (Adult Support and Protection Act 2007)

An individual aged 16 years and over who:

- a) is unable to safeguard their own well-being, property, rights or other interests,
- b) is at risk of harm, and because they are affected by disability, mental disorder, illness or physical or mental infirmity, is more vulnerable to being harmed than adults who are not so affected.

Recruitment

We operate a Safe Recruitment Policy and are committed to ensuring that people who work (including volunteers and self-employed individuals who we engage) with children or adults at risk are appropriately qualified for that role. This means that, where necessary, they will be required to undergo Criminal Records Checks through the Protection of Vulnerable Groups (PVG) Scheme or the equivalent Overseas Criminal Records Check in their country of origin before being allowed to work.

Training

All LTA Accredited Coaches and Club Welfare Officers complete safeguarding training as part of their role and renew this as part of their accreditation requirements or every three years. The Committee also receive safeguarding training (every three years or when there are changes to the Committee) provided to them via the Club Welfare Officer to enable them to recognise the possible signs and indicators of abuse and what to do if they have a safeguarding concern or allegation.

An induction, which includes our safeguarding policies and procedures, reporting and recording arrangements, and details for the Club Welfare Officer, is also provided to all new staff, volunteers, coaches and any self-employed individuals who we engage.

Code of Conduct

All individuals within scope of this policy are expected to familiarise themselves with this policy and the LTA Code of Conduct (available here: <https://www.lta.org.uk/about-us/what-we-do/governance-and-structure/rules-regulations/>), and at all times act in accordance with them. Breaches of the law, this policy and/or the LTA Code of Conduct may result in criminal and/or disciplinary action being taken. Please see [Appendix C - Codes of Conduct](#) for details.

Transportation

It is the responsibility of parents to ensure appropriate transport arrangements are in place for their children when travelling to and from the venue. Similarly, it is the responsibility of the adult at risk (or their carer) to ensure transport arrangements are in place.

Coaches and other staff/volunteers are not responsible for transporting children/adults at risk to and from the venue or other locations (except if it is an emergency), unless it is as part of a venue organised trip in which case the following measures will be in place

- The adult at risk or child's parents are informed of the destination, reason for the journey and who the driver will be
- The adult at risk or child's parent returns a completed consent form and the driver will have a copy of this and emergency contact details during the journey
- There will be two adults in the front of the car, irrespective of the number of children or adults at risk being transported.
- Children or adults at risk are always seated in the back of the vehicle
- If there is a mixture of female and male children or adults at risk, we will seek to have adults of matching gender where possible
- There is an established procedure in the event of a breakdown/emergency
- The driver has a valid UK driving licence, PVG, correct insurance, MOT certificate and complies with laws on the use of seatbelts and restraints.

Supervising Children

Children under the age of 12 years are required to have parental supervision whilst at our venue unless participating in any club-led sessions, such as coaching or tennis camps.

For coaching activities, we comply with the LTA guidance on coach-to-player ratios. Children aged under 12 years must be delivered directly into the care of the coach by the parent/carer and picked up directly from the coach. Please note that it is not enough to drop off outside or at the front door of the venue. Parents must ensure that their child has been delivered to the coach. Children under the stipulated age will not be allowed to leave a coaching session or camp unattended unless permission has been given in writing.

For other activities, eg. away trips/matches, we will use the following adult-to-child ratios:

- 2:8 for children aged 10 and under
- 2:10 for children aged 11 and over.

We may decide to have a greater adult-to-child ratio dependent on the needs of the children or identified risks. At least one of the supervising adults will, where possible, be the same gender as the children. Situations where a child must leave a venue session, eg. to use the toilet, will also be supervised.

Positions of Trust

A person aged 18 or older who holds a position of authority or responsibility over a child or adult at risk is in a position of trust. Positions of trust are not defined by a qualification or job title, but by reference to the activity which the adult is carrying out in relation to the child or adult at risk, namely, coaching, teaching, training, supervising or instructing (including as a volunteer) on a regular basis. People who

are in a position of trust must be aware of the power imbalance they hold over children/adults at risk and not use this for personal advantage or gratification.

The Sexual Offences (Scotland) Act 2009, Section 42 – Sexual abuse of trust Subsection (1) provides that a person commits the offence of sexual abuse of trust if he/she is aged 18 years or older and intentionally engages in a sexual activity with, or directed at, a person who is under 18 and in respect of whom the perpetrator is in a position of trust. Therefore, any sexual activity (including online activity) between someone in a position of trust and a child under 18 years old will be formally reported as it may be a criminal offence.

Types of Abuse

There are four main types of abuse that apply to **children**, these being:

- Sexual
- Physical
- Emotional
- Neglect.

The Scotland (Adult Support and Protection Act 2007) defines categories of adult abuse and harm as follows.

- Physical
- Psychological
- Financial
- Sexual
- Neglect.

Detailed descriptions of these types of abuse, along with other forms of harm, can be found in ([Appendix C](#)).

Increased Vulnerability to Abuse

Vulnerability is a changeable and contextual state but may include children/adults at risk with a physical disability or diagnosed condition such as dementia, learning difficulties, or those who have a mental health condition such as severe anxiety or depression. Children and adults in these groups may:

- Have smaller network of friends and peer group to support and protect
- Require intimate/physical and or invasive medical care required which can allow abuse to be hidden
- Have communication difficulties
- Be less able to resist either verbally or physically
- Be dependent on the abuser for a service or basic need
- Have medical conditions that are used to explain injuries.

Personal circumstances away from tennis such as domestic violence, poverty, substance abuse, homelessness and social exclusion may also have an impact on vulnerability. In addition, children/adults at risk from LGBTQ+ and/or Black, Asian and Other Minority Ethnic groups can:

- Be subjected to bullying, emotional abuse and physical abuse due to their sexual orientation or gender identity

- Experience racism and racist attitudes
- Engage in cultural practices, which are classed as abuse within the UK (eg. , honour-based violence, female genital mutilation)
- Expect to be ignored by people in authority due to experience of institutionalised racism
- Be afraid of further abuse or racist abuse if they challenge others
- Be subjected to myths based on racial stereotyping
- Be using or learning English as a second language and therefore find it more difficult to communicate.

Elite athletes may also be more vulnerable to abuse because they may:

- Have increased dependency on coaching and other support staff for funding, selection and progression
- Be segregated from protective factors such as their family and peer groups
- Feel less able to report concerning behaviour due to a fear of impacting their sporting development
- Be exposed to unhealthy cultures and competitive performance ideologies, where inappropriate practices may be accepted or even encouraged under the belief they deliver success
- Be subjected to intense training and pressure to play/succeed even when injured and achieve unrealistic image, body and weight expectations.

Low Level Concerns

A **low-level concern** (which can also be known as poor practice) is behaviour that falls short of abuse towards a child and does not meet the **allegation** threshold or a referral to the local authority safeguarding team, but which nevertheless harms or places a child at risk of harm or has a negative effect on the safety and well-being of children.

An **allegation** means that it is alleged that a person who works with children has:

- Behaved in a way that has harmed a child or may have harmed a child
- Possibly committed a criminal offence against a child
- Behaved towards a child or children in a way that indicates they may pose a risk of harm to children
- Have behaved in a way in their personal life that raises safeguarding concerns. These concerns do not have to directly relate to a child but could, for example, include an arrest for possession of a weapon
- Have, as a parent or carer, become subject to child protection procedures.

A **low-level concern** is any concern - no matter how small, and even if no more than a 'nagging doubt' - that an adult may have acted in a manner which:

- Is not consistent with the Code of Conduct, and/or
- Relates to their conduct outside of work which, even if not linked to a particular act or omission, has caused a sense of unease about that adult's suitability to work with children

Low level concerns are not acceptable and should be reported to the Club Welfare Officer who will refer the matter on to the LTA Safeguarding Team. Having one

recipient of all such concerns should allow any potential patterns of concerning, problematic or inappropriate behaviour to be identified, and ensure that no information is potentially lost.

Responding to a Safeguarding Concern or Allegation

Everyone has a responsibility to ensure the safety and welfare of children/adults at risk and to take appropriate steps to ensure that safeguarding concerns and allegations are taken seriously and responded to quickly and appropriately, even if the safeguarding concern or allegation may not have occurred recently.

In the first instance it is advisable to discuss safeguarding concerns or allegations with the adult at risk, or the child's parents, except where this may place the child/adult at risk, or someone else, at increased risk.

It is not the responsibility of anyone within the venue to investigate any safeguarding concern or allegation, nor determine whether abuse has taken place. All concerns must be responded to in accordance with the [Reporting a Safeguarding Concern Procedure](#) detailed in [Appendix A](#) and [Appendix B](#).

After referral to the LTA, all **low level concerns** and **allegations** will be triaged and managed through the LTA Safeguarding Regulations, which form part of the LTA Disciplinary Code available here: <https://www.lta.org.uk/about-us/what-we-do/governance-and-structure/rules-regulations/>. The LTA may decide that the **low-level concern** is suitable to be dealt with by the venue directly, in which case the LTA will support them with managing the situation. If further information comes to light which raises the level of concern, the matter must be referred back to the LTA.

Responding to a Disclosure of Abuse

If a child or adult at risk discloses that he or she has been abused or is at risk of abuse:

- Listen carefully and calmly to what is said
- Reassure them that they have done the right thing and what they have told you is very important
- Keep questions to a minimum, only ask questions if you need to identify/clarify what the person is telling you
- Ask them what they would like to happen next
- Explain what you would like to do next
- Ask for their consent for the information to be shared (adults only)
- Let them know that you will need to speak to the Club Welfare Officer/LTA Safeguarding Team because it is in their best interest. If you intend to speak to the police or social care, you should let them know this too.
- Do not seek to investigate it yourself or let doubt/personal bias prevent you from reporting the allegation
- Arrange how you can contact them safely (adults only)
- Help them to contact other organisations for advice and support (eg. Police, Domestic Abuse helpline, Victim Support, etc)

- Ensure that their immediate needs are met and that the priority is their safety and protection from further risk of harm
- Record details of the disclosure ([further advice here](#)) as soon as possible (but not during the disclosure) and then submit the details to the LTA via <https://safeguardingconcern.lta.org.uk/>

Making Safeguarding Personal

Legislation recognises that adults make choices that may mean that one part of their well-being suffers at the expense of another. Similarly, adults can also make a decision to risk their personal safety, for example to provide care to a partner with dementia who becomes abusive when they are disorientated and anxious.

The concept of 'well-being' is threaded throughout UK legislation and is part of the Law about how health and social care is provided. Our well-being includes our mental and physical health, our relationships, our connection with our communities and our contribution to society.

'Making Safeguarding Personal' means engaging an adult at risk in a conversation about how best to respond to their situation in a way that enhances their involvement, choice and control, as well as improving their quality of life, well-being and safety. Their views, wishes, feelings and beliefs will be taken into account when decisions are made about how to support them to be safe and finding the solution that is right for them. Treating people with respect, enhancing their dignity and supporting their ability to make decisions also helps promote people's sense of self-worth and supports recovery from abuse.

If an adult at risk has difficulty making their views and wishes known, they can be supported or represented by an advocate. This might be a safe family member or friend of their choice or a professional advocate (usually from a third sector organisation).

Being able to live free from abuse and neglect is a key element of well-being. Any actions taken to safeguard an adult must take their whole well-being into account and be proportionate to the risk of harm.

Mental Capacity

It is important to make sure an adult at risk has choices in the actions taken to safeguard them, including whether or not they want other people informed about what has happened, however, in some situations the adult may not have the mental capacity to understand the choice or to tell us their views.

If we are concerned that an adult at risk who has a lot of difficulty making their own decisions is being abused or neglected, we will need to refer the situation to the Local Authority, and this should result in health or social care professionals making an assessment of mental capacity and/or getting the person the support they need to make decisions.

We will always seek to obtain the consent from an adult at risk before sharing information about them with others, however there are some circumstances where we will need to act without their consent and these include where:

- it is not safe to contact them to gain their consent – i.e. it might put them or the person making contact at further risk
- we believe they or someone else is at risk, including children
- we believe the adult at risk is being coerced or is under duress
- it is necessary to contact the police to prevent a crime, or to report that a serious crime has been committed
- the adult at risk does not have mental capacity to consent to information being shared about them
- the person causing harm has care and support needs
- when information is shared without the consent of the adult at risk this will be explained to them, when it is safe to do so, and any further actions should still fully include them.

Confidentiality

All safeguarding concerns and allegations will be dealt with confidentiality by the Club Welfare Officer on a need-to-know basis, not only to maintain the privacy of the individuals involved but also to ensure that evidence or any investigation is not compromised. All people involved in a safeguarding concern or allegation should similarly ensure they maintain high levels of confidentiality.

There may be circumstances where an individual raising a safeguarding concern or allegation does not wish to be named. It is not possible to assure anonymity, as in some circumstances individuals will need to be named (for example, where it is necessary to carry out a fair disciplinary process).

Information Sharing and Retention

We share safeguarding information with the LTA in accordance with this policy and LTA regulations. In certain situations, we may be required to also share information with statutory agencies and other relevant organisations where it is considered necessary and proportionate to prevent or manage the risk of harm in tennis or sport to children.

We follow the UK Government's Information Sharing Advice for Safeguarding Practitioners which describes the '7 Golden Rules' of information sharing:

- Remember that the Data Protection Act 2018 and human rights law are not barriers to justified information sharing but provide a framework to ensure that personal information about living individuals is shared appropriately.
- Be open and honest with the individual (and/or their family where appropriate) from the outset about why, what, how and with whom information will, or could be shared, and seek their agreement, unless it is unsafe or inappropriate to do so.
- Seek advice from other practitioners if you are in any doubt about sharing the information concerned, without disclosing the identity of the individual where possible.
- Share with informed consent where appropriate and, where possible, respect the wishes of those who do not consent to share confidential information. You

may still share information without consent if, in your judgement, there is good reason to do so, such as where safety may be at risk.

- Consider safety and well-being: Base your information sharing decisions on considerations of the safety and well-being of the individual and others who may be affected by their actions.
- Necessary, proportionate, relevant, adequate, accurate, timely and secure: Ensure that the information you share is necessary for the purpose for which you are sharing it, is shared only with those individuals who need to have it, is accurate and up-to-date, is shared in a timely fashion, and is shared securely.
- Keep a record of your decision and the reasons for it – whether it is to share information or not. If you decide to share, then record what you have shared, with whom and for what purpose.

Further details of the above guidance:

<https://www.gov.uk/government/publications/safeguarding-practitioners-information-sharing-advice>.

When sharing safeguarding information, we will keep a dated record of:

- what has been shared
- with whom and
- for what purpose.

This should include, where applicable, a record of any steps taken to secure, protect or minimise personal data, any express limitations placed on the onward use of the information, and a record of the basis for sharing.

Where safeguarding information is concerned, we operate in line with best practice which is for long term (eg. lifetime) retention of relevant documentation.

Whistleblowing

Whistleblowing is when someone reports wrongdoing on the basis that it is in the public interest for the wrongdoing to be brought to light. This can include:

- your or another organisation doesn't have clear safeguarding procedures
- concerns aren't dealt with properly or may be covered up
- a concern that was raised hasn't been acted upon
- you are worried that repercussions are likely to arise if you raise a concern.

This applies to incidents that happened in the past, are happening now, or may happen in the future.

Whistleblowers should contact the Club Welfare Officer in the first instance. If the whistleblower does not wish to speak to someone within the venue or the LTA Safeguarding Team, the NSPCC Whistleblowing advice line can be contacted on 0800 028 0285 or by emailing help@nspcc.org.uk.

Safecall is an independent, confidential and, if required, anonymous reporting service provided by the LTA if there are serious concerns regarding any of the public interest areas below:

- Criminal offences, including fraud

- Failure to comply with a legal obligation
- Legal miscarriage of justice
- Endangering someone's health and safety
- Damage to the environment
- Covering up wrongdoing in any of the above categories.

If a Whistleblower feels that it is not appropriate to contact the LTA Safeguarding Team on the grounds of one of the above areas, they can contact Safecall via telephone on 0800 915 1571. Calls are not recorded. Alternatively, a report can be made online: www.safecall.co.uk/report

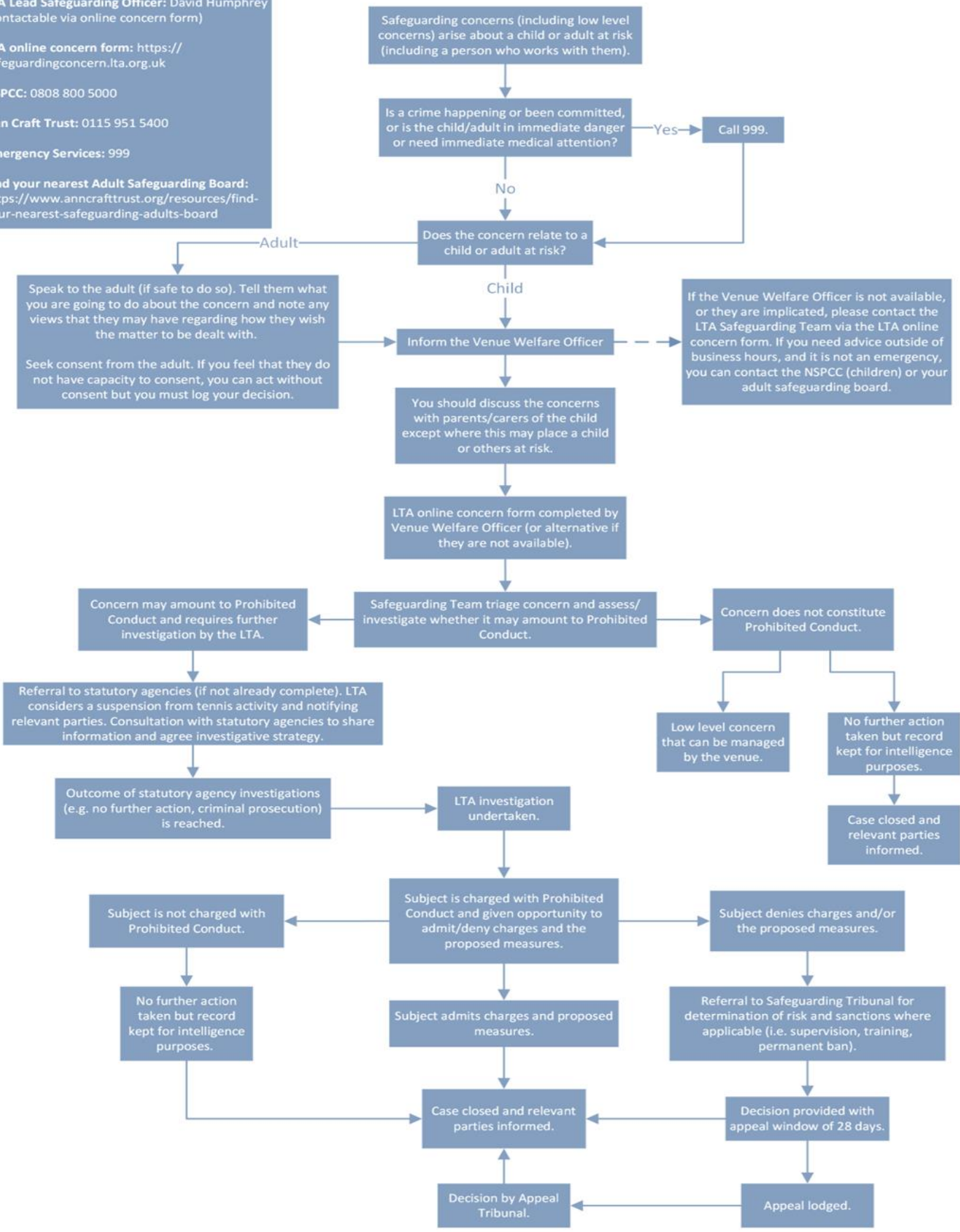
Related Policies

This policy should be read alongside our other policies and procedures, including:

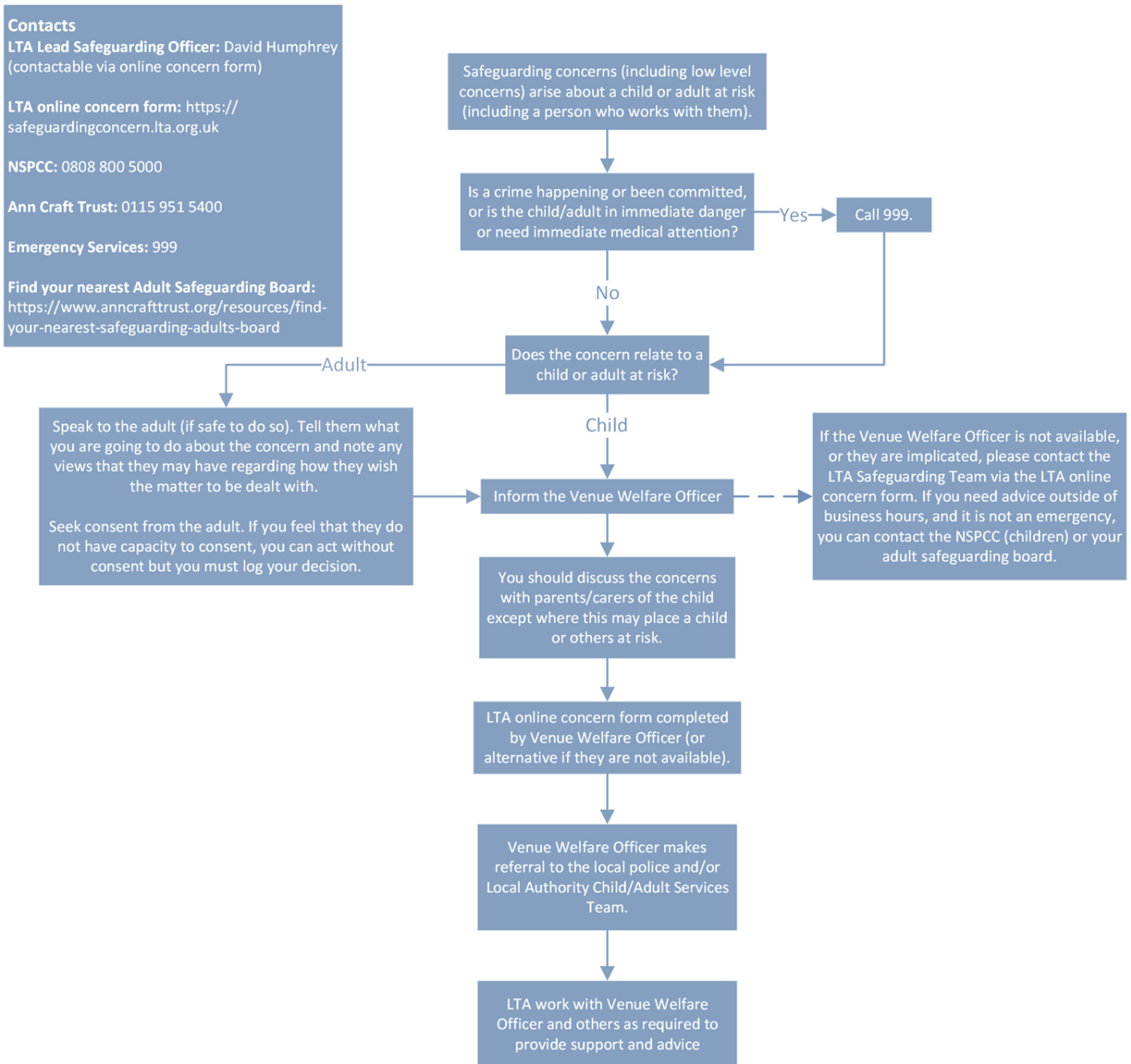
- Photography, Film and Publicity
- Diversity and inclusion
- *Use of changing rooms (Currently DRAFT as no facilities at BTC)*
- Anti-Bullying
- Safe recruitment.
- Codes of conduct
- Online safety and communication

APPENDIX A: REPORTING A SAFEGUARDING CONCERN THAT OCCURS WITHIN TENNIS

Contacts
 LTA Lead Safeguarding Officer: David Humphrey (contactable via online concern form)
 LTA online concern form: <https://safeguardingconcern.lta.org.uk>
 NSPCC: 0808 800 5000
 Ann Craft Trust: 0115 951 5400
 Emergency Services: 999
 Find your nearest Adult Safeguarding Board: <https://www.anncrafttrust.org/resources/find-your-nearest-safeguarding-adults-board>



APPENDIX B: REPORTING A SAFEGUARDING CONCERN THAT HAPPENS OUTSIDE OF TENNIS



APPENDIX C: DEFINITIONS

Adult: a person aged 18 years or older

Child: a person under the age of 18 years.

Parent: birth parents and other adults who are in a parenting role.

Adult at risk:

In Scotland, an individual aged 16 years and over who:

- a) is unable to safeguard their own well-being, property, rights or other interests,
- b) is at risk of harm, AND;
- c) because they are affected by disability, mental disorder, illness or physical or mental infirmity, is more vulnerable to being harmed than adults who are not so affected.

Safeguarding: the action taken to promote the welfare of children and protect them from harm. This means protecting children from abuse and maltreatment, preventing harm to their health or development, ensuring they grow up with the provision of safe and effective care, and taking action to enable all children to have the best outcomes. Safeguarding adults means protecting a person's right to live in safety, free from abuse and neglect.

Child protection: the processes undertaken to protect children who have been identified as suffering, or being at risk of suffering, significant harm.

Prohibited conduct: engage, or attempt or threaten to engage, in conduct that directly or indirectly harms the physical and/or mental welfare and/or safety of one or more child or adult at risk; or pose a risk of harm to the physical and/or mental welfare and/or safety of one or more child or adult at risk.

Abuse: Abuse happens when a person harms a child or an adult at risk. An abuser can be:

- family members
- friends
- people working or volunteering in organisational or community settings
- people they know
- strangers

Indicators of abuse: There are many signs and indicators that may suggest a child or adult at risk is being abused or neglected. The NSPCC and Ann Craft Trust have comprehensive lists of the types of abuse and their indicators at:

<https://www.nspcc.org.uk/what-is-child-abuse/types-of-abuse/> and

<https://www.anncrafttrust.org/resources/types-of-harm/>. Examples of signs and

symptoms include but are not limited to:

- Unexplained change in behaviour
- Unexplained bruises or injuries
- Missing belongings or money
- Child is not attending / no longer enjoying their sessions

- Changes in weight
- Truancy
- Sexually explicit knowledge or behaviour
- Being withdrawn
- Genital pain, stomach pains, discomfort, pregnancy, incontinence, urinary infections, STDs.
- Dirty, ill-fitting clothes or a lack of appropriate clothing for the weather
- Self-harm.
- A fear of a particular group of people or individual.
- Lack of friends
- Lack or growth or development
- Low self-esteem

Neglect:

Children - Ongoing failure to meet the basic needs of children. Neglect may involve failing to provide adequate food or shelter including exclusion from home or abandonment, failing to protect them from physical and emotional harm or danger or failing to ensure access to appropriate medical care or treatment. It may also include neglect of, or unresponsiveness to, basic emotional needs.

Adults at risk - includes ignoring medical or physical care needs and failing to provide access to appropriate health social care or educational services. It also includes the withdrawing of the necessities of life, including medication, adequate nutrition, and heating.

Emotional abuse: Any act or other treatment which is persistent and may cause emotional damage and undermine a child's sense of wellbeing. This includes persistent criticism, denigration or putting unrealistic expectations on children, isolation, verbal assault, humiliation, blaming, controlling, intimidation or use of threats.

Emotional/Psychological abuse (adults at risk): Includes threats of harm or abandonment, deprivation of contact, humiliation, blaming, controlling, intimidation, coercion, harassment, verbal abuse, isolation, or withdrawal from services or supportive networks.

Physical abuse:

Children - Physical abuse happens when a child is deliberately hurt, causing physical harm. It can involve hitting, kicking, shaking, throwing, poisoning, burning, or suffocating. It's also physical abuse if a parent or carer makes up or causes the symptoms of illness in children. For example, they may give them medicine they don't need, making them unwell. This is known as fabricated or induced illness (FII).

Adults at risk - Hitting, slapping, pushing, kicking, misuse of medication, restraint, or inappropriate sanctions.

Sexual abuse:

Children - Any act which involves forcing or enticing a child to take part in sexual activities. It doesn't necessarily involve violence and the child may not be aware that

what is happening is abuse. The activities may involve physical contact, including assault by penetration (for example, rape or oral sex) or non-penetrative acts such as masturbation, kissing, rubbing, and touching outside of clothing.

They may also include non-contact activities, such as involving children in looking at, or in the production of, sexual images, watching sexual activities, encouraging children to behave in sexually inappropriate ways, or grooming a child in preparation for abuse. Sexual abuse can take place online, and technology can be used to facilitate offline abuse. Sexual abuse is not solely perpetrated by adult males. Women can also commit acts of sexual abuse, as can other children.

Abusers may threaten to send sexually explicit images, video, or copies of sexual conversations to the child's friends and family unless they take part in other sexual activity. Images or videos may continue to be shared long after the abuse has stopped.

Adults at risk - Includes rape, indecent exposure, sexual harassment, inappropriate looking or touching, sexual teasing or innuendo, sexual photography, subjection to pornography or witnessing sexual acts, indecent exposure and sexual assault, or sexual acts to which the adult has not consented or was pressured into consenting.

Grooming: The process of developing a relationship with and the trust of a child, their family, and any other adults around the child, to commit sexual abuse or exploitation against them. Grooming can happen both online and in person.

Child sexual exploitation: A form of child sexual abuse. It occurs where an individual or groups of people take advantage of an imbalance of power to coerce, manipulate or deceive a child into sexual activity in exchange for something the victim needs or wants and/or for the financial advantage or increased status of the perpetrator or facilitator. The victim may have been sexually exploited even if the sexual activity appears consensual. Child sexual exploitation can also take place using technology.

Self-neglect (adults at risk): Covers a wide range of behaviour, but it can be broadly defined as neglecting to care for one's personal hygiene, health, or surroundings. An example of self-neglect is behaviour such as hoarding.

Modern Slavery (adults at risk): Encompasses slavery, human trafficking, forced labour, and domestic servitude.

Domestic Abuse (adults at risk): Domestic abuse is any type of controlling, coercive, threatening behaviour, violence, or abuse between people who are, or who have been in a relationship, regardless of gender or sexuality. It can include physical, sexual, psychological, emotional or financial abuse.

Exposure to domestic abuse is child abuse. Children can be directly involved in incidents of domestic abuse, or they may be harmed by seeing or hearing abuse happening. Children in homes where there is domestic abuse are also at risk of other types of abuse or neglect.

Discriminatory (adults at risk): Abuse or bullying because of discrimination occurs when motivated by a prejudice against certain people or groups of people. This may be because of an individual's ethnic origin, colour, nationality, race, religion or belief, gender, gender reassignment, sexual orientation or disability. Actions may include unfair or less favourable treatment, culturally insensitive comments, insults and 'banter'.

Organisational (adults at risk): Includes neglect and poor care practice within an institution or specific care setting, such as a hospital or care home, or in relation to care provided in one's own home. Organisational abuse can range from one off incidents to ongoing ill-treatment. It can be through neglect or poor professional practice as a result of the structure, policies, processes and practices within an organisation.

Financial (adults at risk): Includes theft, fraud, internet scamming, and coercion in relation to an adult's financial affairs or arrangements, including in connection with wills, property, inheritance or financial transactions. It can also include the misuse or misappropriation of property, possessions, or benefits.

Harmful sexual behaviour (HSB): HSB is developmentally inappropriate sexual behaviour which is displayed by children, and which may be harmful or abusive. It may also be referred to as sexually harmful behaviour or sexualised behaviour.

HSB encompasses a range of behaviour, which can be displayed towards younger children, peers, older children or adults. It is harmful to the children who display it, as well as the people it is directed towards.

HSB can include:

- using sexually explicit words and phrases
- inappropriate touching
- using sexual violence or threats
- sexual activity with other children or adults

Sexual behaviour between children is considered harmful if one of the children is much older – particularly if there is more than two years' difference in age or if one of the children is pre-pubescent and the other isn't. However, a younger child can abuse an older child, particularly if they have power over them – for example, if the older child is disabled.

Bullying: Repeated behaviour intended to intimidate or upset a child and/or make them feel uncomfortable or unsafe, for example, name calling, exclusion or isolation, spreading rumours, embarrassing someone in public or in front of their peers, threatening to cause harm, physically hurting someone or damaging their possessions.

Cyberbullying: The use of technology to harass, threaten, embarrass, humiliate, spread rumours, or target another child.

Child trafficking: Child trafficking involves recruiting and moving children who are then exploited. Many children are trafficked into the UK from overseas, but children

can also be trafficked from one part of the UK to another. Children may be trafficked for child sexual exploitation, benefit fraud, forced marriage, domestic servitude, forced labour, criminal exploitation and more.

County lines: The organised criminal distribution of drugs by gangs from the big cities into smaller towns and rural areas using children. Gangs recruit children through deception, intimidation, violence, debt bondage and/or grooming. County line gangs pose a significant threat to children on whom they rely to conduct and/or facilitate such criminality.

Female genital mutilation: Female genital mutilation (FGM) is the partial or total removal of external female genitalia for non-medical reasons. It's also known as female circumcision or cutting. The age at which FGM is carried out varies. It may be carried out when a child is new-born, during childhood or adolescence, just before marriage or during pregnancy. There are no medical reasons to carry out FGM.

Hazing: Rituals, initiation activities, actions or situations that occur with or without consent, which recklessly, intentionally or unintentionally endanger the physical or emotional well-being of vulnerable groups.

Honour-Based Violence: Honour-Based Violence (HBV) encompasses crimes which have been committed to protect or defend the honour of the family and/or the community, including Female Genital Mutilation (FGM), forced marriage, and practices such as breast ironing. All forms of HBV are abuse.

Infatuations: Children may develop an infatuation with a person who works with them. Such situations should be handled sensitively to maintain the dignity and safety of all concerned. People who work with children should be aware, that in such circumstances, there is a high risk that words or actions may be misinterpreted and that allegations could be made against them. These people should therefore ensure that their own behaviour is above reproach. Situations where a child is infatuated should be raised at the earliest opportunity with the Club Welfare Officer and LTA Safeguarding Team.

Peer-on-peer abuse: Children can be taken advantage of or harmed by their peers. Peer-on-peer abuse is any form of physical, sexual, emotional and financial abuse, and coercive control, exercised between individuals and within relationships (both intimate and non-intimate).

Radicalisation: The process by which a person comes to support terrorism and forms of extremism leading to terrorism. Anybody from any background can become radicalised. The grooming of children for the purposes of involvement in extremist activity is a serious safeguarding issue.

APPENDIX D – CODES OF CONDUCT

The Code of Conduct should be interpreted in a spirit of integrity, transparency and common sense, with the best interests of children/adults at risk as the primary consideration. Therefore, members are encouraged to be open at all times and to share any concerns or complaints about any aspect of the club with:

<p>Shirley Davidson Club President 07742 709797 shirl34blair@hotmail.com</p>	<p>Aine Fitzgerald Sandi MacDougall Club Welfare Officers 07444 017941 WelfareOfficerBTC@gmail.com</p>	<p>Rob Exell Club Secretary BNTCsecretary@gmail.com</p>
---	--	--

All members of staff and volunteers agree to:

- Prioritise the well-being of all children/adults at risk at all times
- Treat all children/adults at risk fairly and with respect
- Be a positive role model. Act with integrity, even when no one is looking
- Help to create a safe and inclusive environment both on and off court
- Not allow any rough or dangerous behaviour, bullying or the use of bad or inappropriate language
- Report all allegations of abuse or poor practice to the Club Welfare Officer
- Not use any sanctions that humiliate or harm a child or adult at risk
- Value and celebrate diversity and make all reasonable efforts to meet individual needs
- Keep clear boundaries between professional and personal life, including on social media
- Have the relevant consent from parents/carers, children and adults before taking or using photos and videos
- Refrain from making physical contact with children or adults unless it is necessary as part of an emergency or congratulatory (eg. handshake / high five)
- Refrain from smoking and consuming alcohol during club activities or coaching sessions
- Ensure roles and responsibilities are clearly outlined and everyone has the required information and training
- Avoid being alone with a child or adult at risk unless there are exceptional circumstances
- Refrain from transporting children or adults at risk, unless this is required as part of a club activity (eg. away match) and there is another adult in the vehicle
- Not abuse, neglect, harm or discriminate against anyone; or act in a way that may be interpreted as such
- Not have a relationship with anyone under 18 for whom they are coaching or responsible for
- Not to have a relationship with anyone over 18 whilst continuing to coach or be responsible for them

All adults/parents/carers agree to:

- Positively reinforce your child and show an interest in their tennis to help them enjoy the sport
- Use appropriate language at all times
- Be realistic and supportive
- Never ridicule or admonish a child for making a mistake or losing a match
- Treat all children, adults, volunteers, coaches, officials and members of staff with respect
- Behave responsibly at the venue; do not embarrass your child
- Accept the official's decisions and do not go on court or interfere with matches
- Encourage your child to learn and play by the rules, and teach them that they can only do their best
- Help your child to recognise good performance, not just results.
- Set a good example by recognising fair play and applauding the good performances of all.
- Discourage unfair play and arguing with officials.
- Never force your child to take part in sport.
- Your first question following any match could be: "Did you enjoy it?" not "Did you win?"
- Deliver and collect your child punctually from the venue
- Ensure your child has appropriate clothing for the weather conditions
- Ensure that your child understands their code of conduct
- Adhere to your venue's safeguarding policy, diversity and inclusion policy, rules and regulations
- Provide emergency contact details and any relevant information about your child including medical history
- At no stage should you communicate with your child or interfere with the on-court helpers and referees during a match – just enjoy the game and let officials take care of the rules!
- Allow your child to play in the Mini Tennis colour stage that is appropriate to them. This will ensure they enjoy LTA Youth Tennis: playing the game, developing their skills and gaining confidence.
- Be patient. Steady progression is unusual in children; peaks and plateaus are common.

All children agree to:

As a junior member of Blairgowrie Tennis Club you are expected to abide by the following code of practice:

- Be friendly, supportive and welcoming to other children and adults
- Play fairly and honestly
- Respect club staff, volunteers and officials and accept their decisions
- Behave, respect and listen to your coach
- Take care of your equipment and club property

- Respect the rights, dignity and worth of all participants regardless of age, gender, ability, race, culture, religion or sexual identity
- Not use bad, inappropriate or racist language, including on social media
- Not bully, intimidate or harass anyone, including on social media
- Not smoke, drink alcohol or drugs of any kind on club premises or whilst representing the club at competitions or events
- Talk to the Club Welfare Officer about any concerns or worries they have about themselves or others
- Keep to agreed timings for training and competitions, or inform their coach or team manager if they are going to be late
- Wear suitable kit for training and match sessions, as agreed with the coach.

APPENDIX E: LEGISLATION, GUIDANCE AND REGULATIONS

Our safeguarding approaches are based on LTA and Government guidance as well as UK legislation, which includes:

<ul style="list-style-type: none"> • Age of Legal Capacity Act 1991 (Scotland) • Care Act 2014 • Children Act 1989 • Children Act 1995 (Scotland) • Children Act 2004 • Children (Equal Protection from Assault) Act 2019 (Scotland) • Children and Social Work Act 2017 • Children and Young People Act 2014 (Scotland) • Commissioner for Children and Young People Act 2003 (Scotland) • Criminal Procedure Act 1995 (Scotland) • Data Protection Act 1998 • Disclosure Act 2020 (Scotland) • Equalities Act 2010 • European Convention on Human Rights 1950 • General Data Protection Regulations 2018 • Getting It Right For Every Child (GIRFEC) (Scotland) • Human Rights Act 1998 • Information Sharing Advice for Safeguarding Practitioners 2018 	<ul style="list-style-type: none"> • Keeping Children Safe in Education 2022 • Police Act 1997 • Protection from Abuse Act 2001 (Scotland) • Protection of Children Act 1999 • Protection of Children and Prevention of Sexual Offences Act 2005 (Scotland) • Protection of Freedoms Act 2012 • Protection of Vulnerable Groups Act 2007 (Scotland) • Rehabilitation of Offenders Act 1974 • Safeguarding Vulnerable Groups Act 2006 • Sexual Offences (Amendments) Act 2000 • Sexual Offences Act 2009 (Scotland) • Sexual Offences Act 2003 • Social Services and Wellbeing Act 2014 (Wales) • The Age of Criminal Responsibility Act 2019 (Scotland) • United Nations Convention on the Rights of the Child 1989 • Wales Safeguarding Procedures • Working Together to Safeguard Children 2018 (revised 2020)
--	---

Each home nation also has legislation about the circumstances in which decisions can be made on behalf of an adult at risk who is unable to make decisions for themselves:

- England and Wales - Mental Capacity Act 2005
- Scotland - Adults with Incapacity Act 2000
- There are specific offences applying to the mistreatment of and sexual offences against adults who do not have Mental Capacity and specific offences where mistreatment is carried out by a person who is employed as a carer: eg. wilful neglect and wilful mistreatment.

APPENDIX F: ADDITIONAL INFORMATION AND SUPPORT

<p>Alcoholics Anonymous Free helpline for alcohol issues. 0800 9177 650 help@aamail.org www.alcoholicsanonymous.org.uk</p>	<p>NAPAC The National Association for People Abused in Childhood (NAPAC) offers support to adult survivors of all types of childhood abuse. 0808 801 0331 https://napac.org.uk/</p>
<p>Anger Management British Association of Anger Management (BAAM) 0845 130 0286 www.angermanage.co.uk</p>	<p>NSPCC The NSPCC can provide support with any concerns about a child's safety or wellbeing. 0808 800 5000 help@nspcc.org.uk</p>
<p>Beat Provides support on all aspects of eating disorders. 0808 801 0677 (over 18s) help@beateatingdisorders.org.uk</p>	<p>One in four Specialising in working with survivors of childhood sexual abuse and sexual violence. Offers long-term 1-1 therapy. 0208 697 2112 admin@oneinfour.org.uk www.oneinfour.org.uk</p>
<p>Bipolar UK Support to enable people affected by bipolar disorder/ manic depression to take control of their lives. 0333 323 3880 info@bipolaruk.org www.bipolaruk.org.uk</p>	<p>Relate Counselling and relationship education for couples. Live chat line service also available. 0300 100 1234 www.relate.org.uk</p>
<p>ChildLine ChildLine help anyone under 19 in the UK with any issue they are going through. 08001111 or you can email or live chat at: https://www.childline.org.uk/about/about-childline/</p>	<p>Samaritans Call 116 123 for free - Whatever you're going through, a Samaritan will face it with you. www.samaritans.org</p>
<p>Galop Emotional and practical support for LGBT people experiencing domestic violence. 0800 999 5428 help@galop.org.uk</p>	<p>Sane Deals with all aspects of mental illness including depression, schizophrenia and anxiety. 0845 767 8000 www.sane.org.uk</p>
<p>Men's Advice Line Information, support and advice to men experiencing domestic violence, offered by Respect. 0808 801 0327 info@mensadviceline.org.uk</p>	<p>The Survivors Trust The Survivors' Trust is the largest umbrella agency for specialist rape and sexual abuse services in the UK 01788 550554 www.thesurvivorstrust.org</p>
<p>Mind Information, advice, guidance and support for people with mental health problems. 0300 123 3393 info@mind.org.uk</p>	
<p>National Domestic Violence Helpline Run in partnership between Women's Aid & Refuge. 0808 2000 247</p>	

HOW YOU CAN GET IN TOUCH

You can get in touch with one of our team by emailing BNTCsecretary@gmail.com.

If you have any queries about this policy, in the first instance you can email

GovernanceBTC@gmail.com.

Approved by	President: Shirley Davidson	Club Welfare Officer: Áine Fitzgerald
Date	4/4/24	4/4/24

Next review date: 3 yearly or as required

REVISION CONTROL/CHANGE HISTORY

Revision Date	Changes/Reason for change
Sept 2018	Original release for GDPR compliance
Nov 2020	Mini Tennis now LTA Youth Tennis. Minor editorial changes.
Feb 2021	New section added following LTA inspection to define and clarify supervision requirements for juniors aged 12 and under, plus related minor edits and restructuring throughout.
Feb 2023	Policy review – new Club Welfare Officer contact details.
Mar2024	Major revision in line with LTA changes to include: New flowcharts for reporting a concern Additions: responsibility for safeguarding within the venue; details on recruitment and training; details on the definition of position of trust; information about factors which increase vulnerability to abuse; low level concerns definition and procedure; requirements on confidentiality; section on information sharing and retention of safeguarding related information; section on mental capacity (adults at risk); section on making safeguarding personal (adults at risk); section on consent requirements for adults at risk Updated: section on legislation and addition of support services.