

Bramford Tennis Club

Partner for Contact:
Order No.:
Company:
Customer No.:

Date: 05.09.2023
Operator:

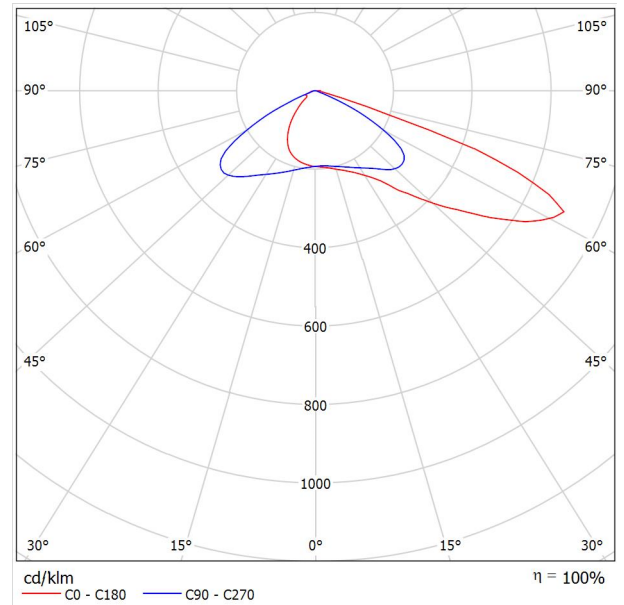


Operator
Telephone
Fax
e-Mail

Carbon8Lighting Athlima 300W T4B / Luminaire Data Sheet

Luminous emittance 1:

See our luminaire catalog for an image of the luminaire.



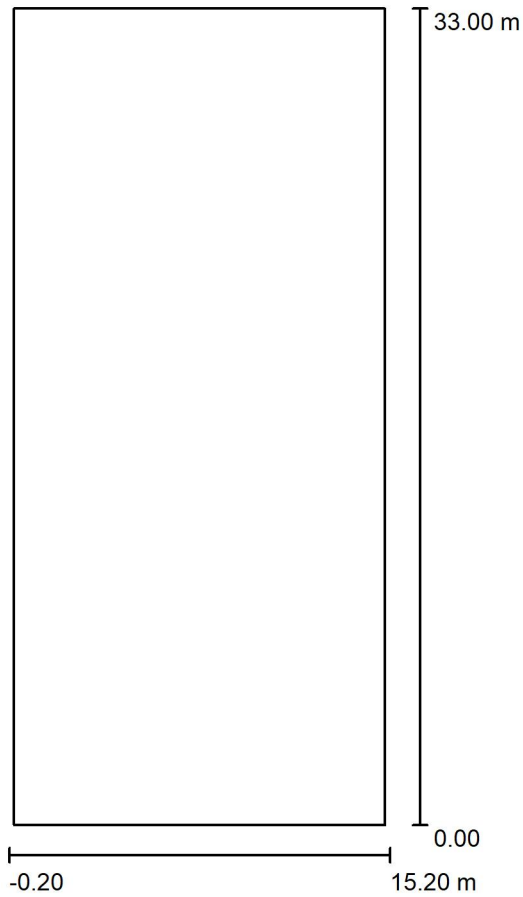
Luminaire classification according to CIE: 100
CIE flux code: 34 78 98 100 100

Due to missing symmetry properties, no UGR table can be displayed for this luminaire.



Operator
 Telephone
 Fax
 e-Mail

Exterior Scene 1 / Planning data



Maintenance factor: 0.90, ULR (Upward Light Ratio): 0.0%

Scale 1:306

Luminaire Parts List

No.	Pieces	Designation (Correction Factor)	Φ (Luminaire) [lm]	Φ (Lamps) [lm]	P [W]
1	8	Carbon8Lighting Athlima 300W T4B (1.000)	49350	49376	320.0
Total:			394802	395008	2560.0

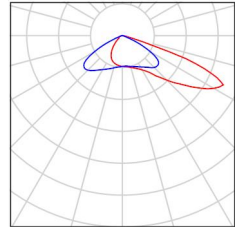


Operator
Telephone
Fax
e-Mail

Exterior Scene 1 / Luminaire parts list

8 Pieces Carbon8Lighting Athlima 300W T4B
Article No.: Athlima
Luminous flux (Luminaire): 49350 lm
Luminous flux (Lamps): 49376 lm
Luminaire Wattage: 320.0 W
Luminaire classification according to CIE: 100
CIE flux code: 34 78 98 100 100
Fitting: 1 x User defined (Correction Factor 1.000).

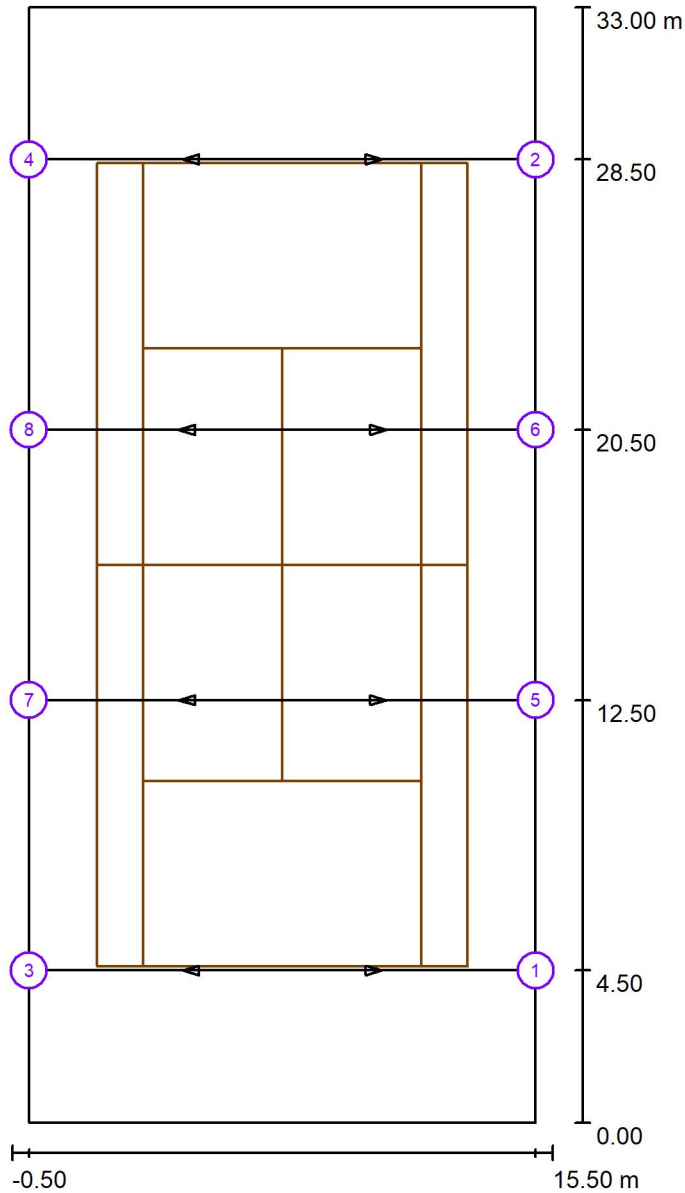
See our luminaire catalog for an image of the luminaire.





Operator
Telephone
Fax
e-Mail

Exterior Scene 1 / Sport Luminaires (Coordinates List)



Scale 1 : 224

List of the Sport Luminaires

Luminaire	Index	Position [m]			Aiming Point [m]			Angle [°]	Alignment	Pole
		X	Y	Z	X	Y	Z			
Carbon8Lighting Athlima 300W T4B	1	15.000	4.500	5.100	4.556	4.500	0.000	26.0	(C 0, G IMax)	/
Carbon8Lighting Athlima 300W T4B	2	15.000	28.500	5.100	4.556	28.500	0.000	26.0	(C 0, G IMax)	/
Carbon8Lighting Athlima 300W T4B	3	0.000	4.500	5.100	10.444	4.500	0.000	26.0	(C 0, G IMax)	/
Carbon8Lighting Athlima 300W T4B	4	0.000	28.500	5.100	10.444	28.500	0.000	26.0	(C 0, G IMax)	/



Operator
 Telephone
 Fax
 e-Mail

Exterior Scene 1 / Sport Luminaires (Coordinates List)

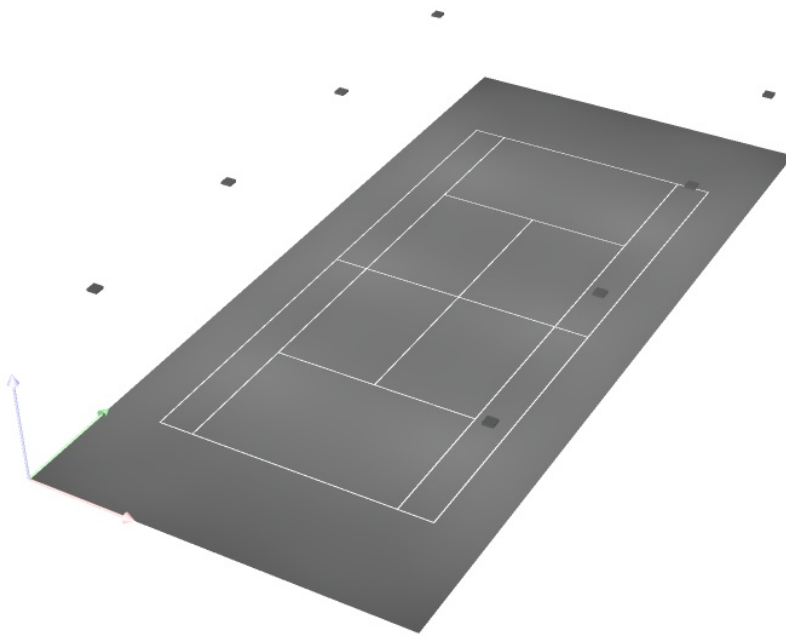
List of the Sport Luminaires

Luminaire	Index	Position [m]			Aiming Point [m]			Angle [°]	Alignment	Pole
		X	Y	Z	X	Y	Z			
Carbon8Lighting Athlima 300W T4B	5	15.000	12.500	5.100	4.433	12.500	0.000	25.8	(C 0, G IMax)	/
Carbon8Lighting Athlima 300W T4B	6	15.000	20.500	5.100	4.433	20.500	0.000	25.8	(C 0, G IMax)	/
Carbon8Lighting Athlima 300W T4B	7	0.000	12.500	5.100	10.567	12.500	0.000	25.8	(C 0, G IMax)	/
Carbon8Lighting Athlima 300W T4B	8	0.000	20.500	5.100	10.567	20.500	0.000	25.8	(C 0, G IMax)	/



Operator
Telephone
Fax
e-Mail

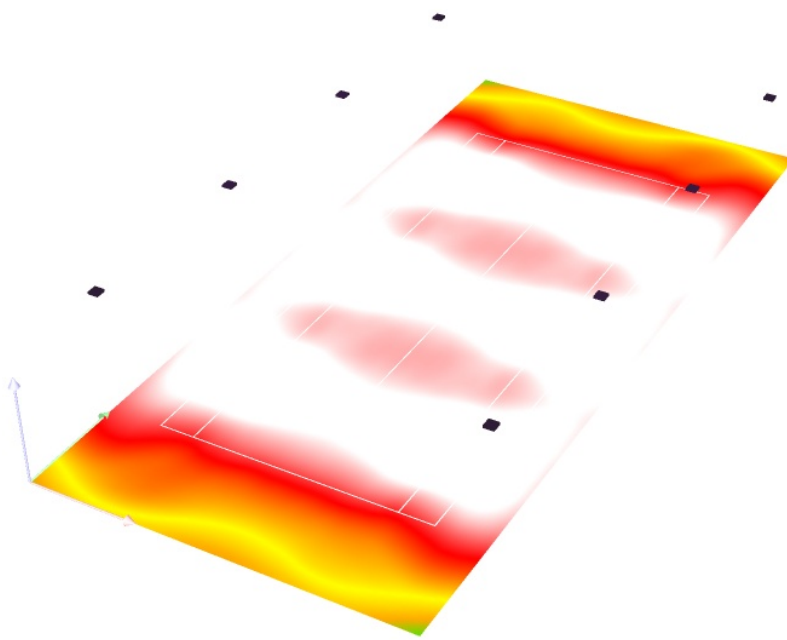
Exterior Scene 1 / 3D Rendering





Operator
Telephone
Fax
e-Mail

Exterior Scene 1 / False Colour Rendering



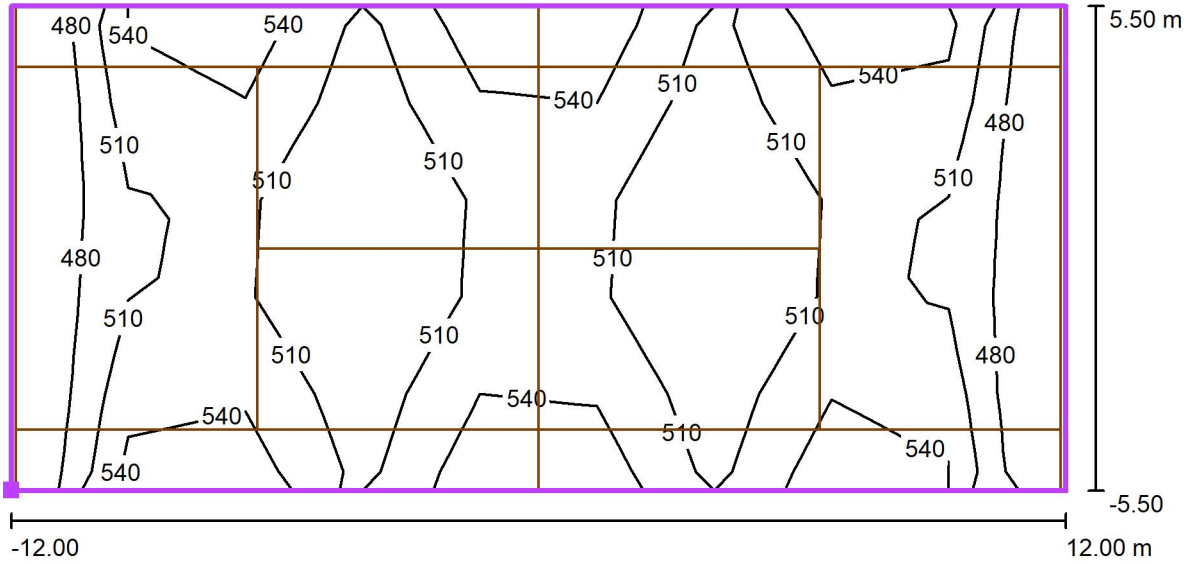
0 50 100 150 200 250 300 400 500

lx



Operator
Telephone
Fax
e-Mail

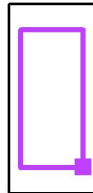
Exterior Scene 1 / Tennis 1 Calculation Grid (PPA) / Isolines (E, Horizontal)



Values in Lux, Scale 1 : 172

Position of surface in external scene:

Marked point: (13.000 m, 4.500 m, 0.000 m)



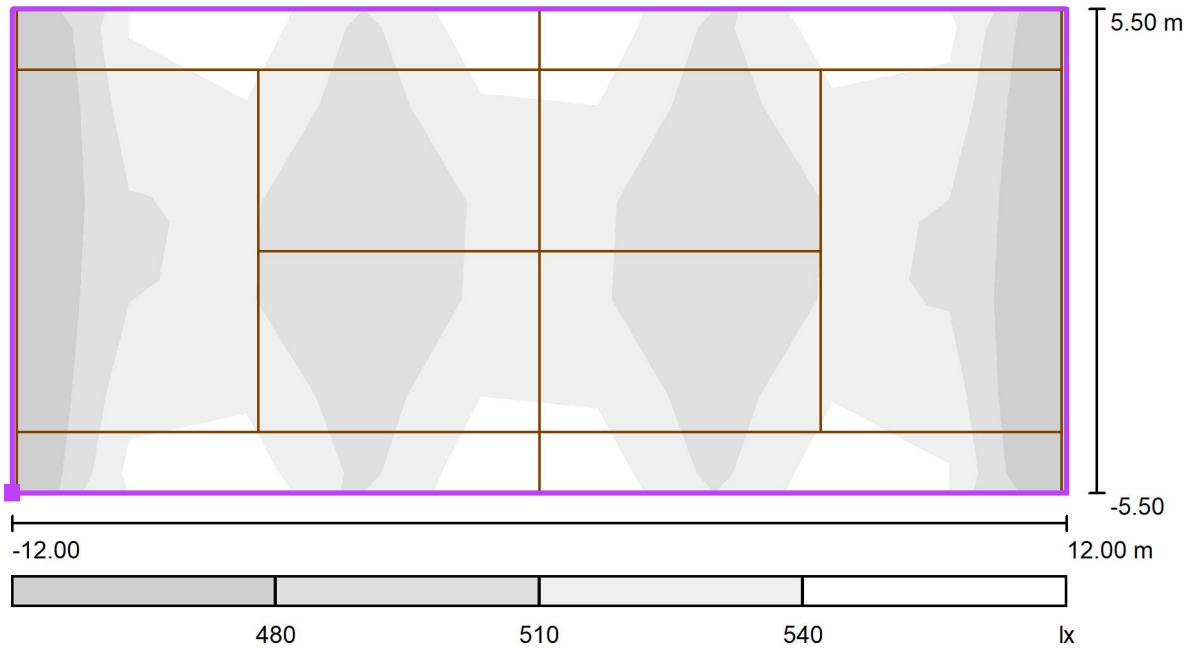
Grid: 9 x 5 Points

E_{av} [lx]	E_{min} [lx]	E_{max} [lx]	u0	E_{min} / E_{max}
514	470	604	0.92	0.78



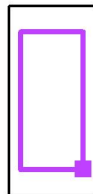
Operator
Telephone
Fax
e-Mail

Exterior Scene 1 / Tennis 1 Calculation Grid (PPA) / Greyscale (E, Horizontal)



Scale 1 : 172

Position of surface in external scene:
Marked point: (13.000 m, 4.500 m,
0.000 m)



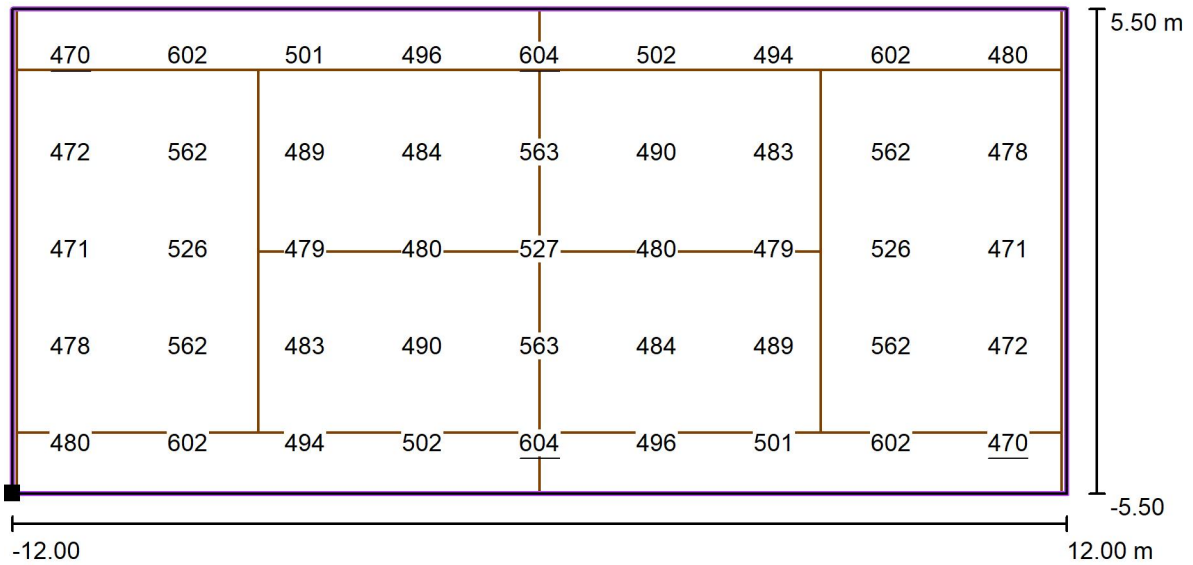
Grid: 9 x 5 Points

E_{av} [lx]	E_{min} [lx]	E_{max} [lx]	u0	E_{min} / E_{max}
514	470	604	0.92	0.78



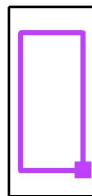
Operator
Telephone
Fax
e-Mail

Exterior Scene 1 / Tennis 1 Calculation Grid (PPA) / Value Chart (E, Horizontal)



Values in Lux, Scale 1 : 172

Position of surface in external scene:
Marked point: (13.000 m, 4.500 m, 0.000 m)



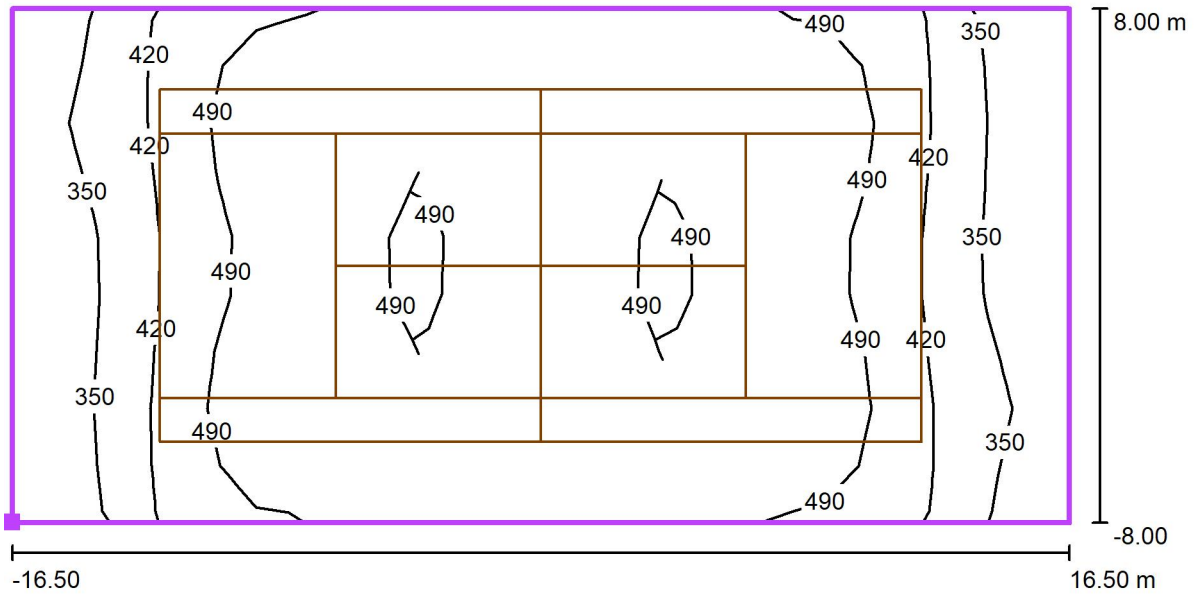
Grid: 9 x 5 Points

E_{av} [lx]	E_{min} [lx]	E_{max} [lx]	u0	E_{min} / E_{max}
514	470	604	0.92	0.78



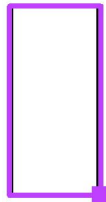
Operator
 Telephone
 Fax
 e-Mail

Exterior Scene 1 / Tennis 1 Calculation Grid (TPA) / Isolines (E, Horizontal)



Values in Lux, Scale 1 : 236

Position of surface in external scene:
 Marked point: (15.500 m, 0.000 m, 0.000 m)



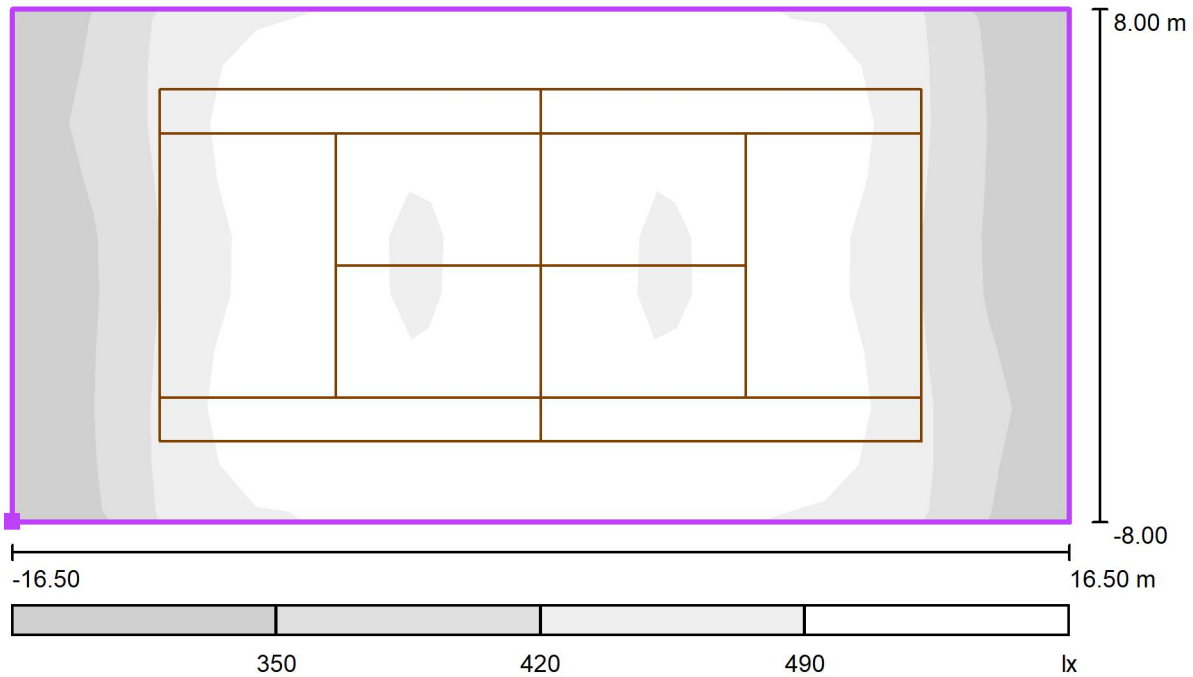
Grid: 13 x 9 Points

E_{av} [lx]	E_{min} [lx]	E_{max} [lx]	u_0	E_{min} / E_{max}
466	281	600	0.60	0.47



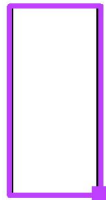
Operator
Telephone
Fax
e-Mail

Exterior Scene 1 / Tennis 1 Calculation Grid (TPA) / Greyscale (E, Horizontal)



Scale 1 : 236

Position of surface in external scene:
Marked point: (15.500 m, 0.000 m,
0.000 m)



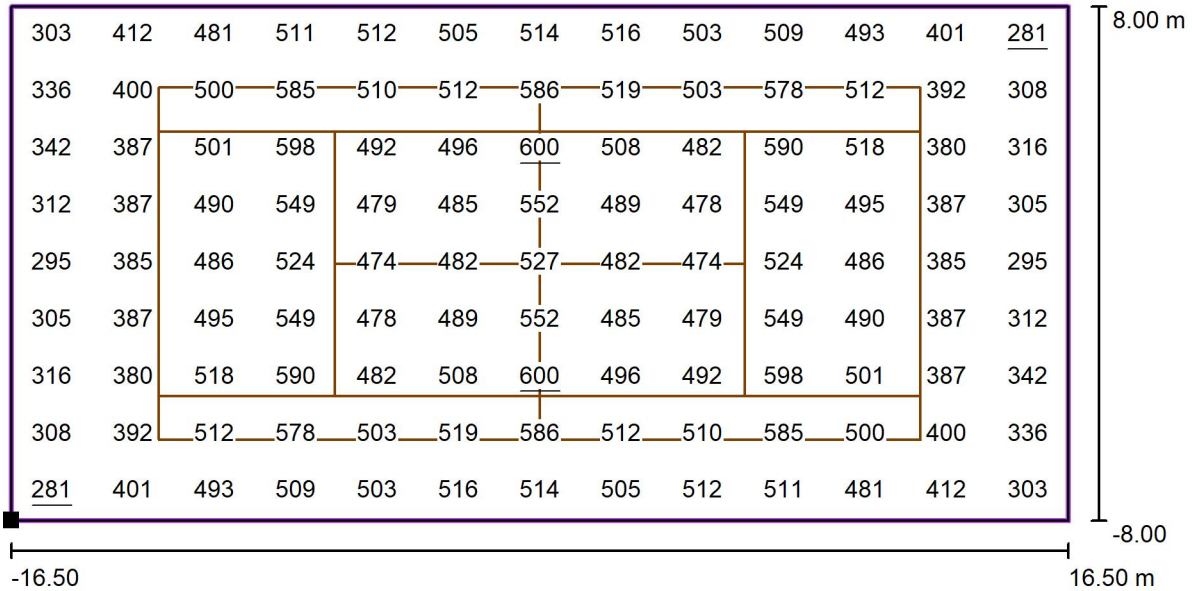
Grid: 13 x 9 Points

E_{av} [lx]	E_{min} [lx]	E_{max} [lx]	u0	E_{min} / E_{max}
466	281	600	0.60	0.47



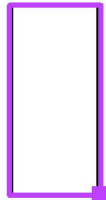
Operator
Telephone
Fax
e-Mail

Exterior Scene 1 / Tennis 1 Calculation Grid (TPA) / Value Chart (E, Horizontal)



Values in Lux, Scale 1 : 236

Position of surface in external scene:
Marked point: (15.500 m, 0.000 m, 0.000 m)



Grid: 13 x 9 Points

E_{av} [lx]	E_{min} [lx]	E_{max} [lx]	u0	E_{min} / E_{max}
466	281	600	0.60	0.47