

## **The LED Store Project 3076**

CAUTION: The performed design & lux level calculation has been carried out using the specified luminaires & layouts - any deviations to product and/or layout will result in variations in the lux levels and overall lighting scheme and could affect compliance.

Date: 27.04.2022  
Operator: The LED Store



Operator The LED Store  
Telephone 03333 444 943  
Fax 03333 444 943  
e-Mail [sales@theledstore.co](mailto:sales@theledstore.co)

## Table of contents

<b>The LED Store Project 3076</b>	
Project Cover	1
Table of contents	2
<b>The LED Store LST-SFL-300 LED Stadium/Sports Light 300w</b>	
Luminaire Data Sheet	3
<b>Bramford Tennis Club</b>	
Planning data	4
Luminaire parts list	5
3D Rendering	6
False Colour Rendering	7
<b>Exterior Surfaces</b>	
<b>Calculation Grid</b>	
Value Chart (E, Perpendicular)	8



Operator The LED Store  
Telephone 03333 444 943  
Fax 03333 444 943  
e-Mail [sales@theledstore.co](mailto:sales@theledstore.co)

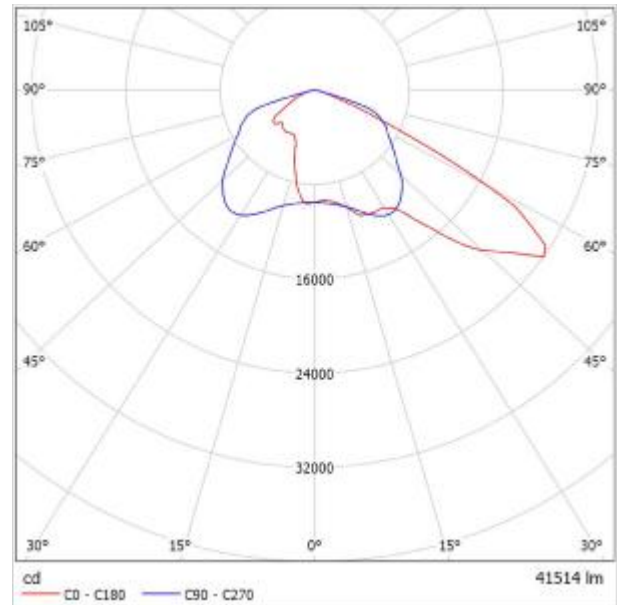
## The LED Store LST-SFL-300 LED Stadium/Sports Light 300w / Luminaire Data Sheet

See our luminaire catalog for an image of the luminaire.



Luminaire classification according to CIE: 100  
CIE flux code: 36 78 98 100 100

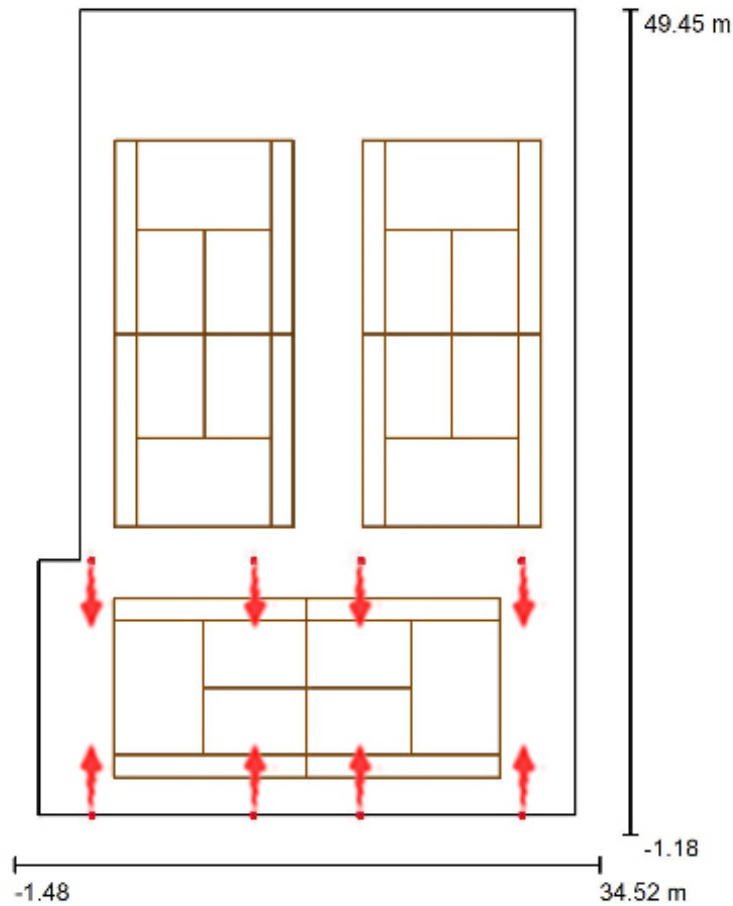
Luminous emittance 1:



Due to missing symmetry properties, no UGR table can be displayed for this luminaire.

Operator The LED Store  
 Telephone 03333 444 943  
 Fax 03333 444 943  
 e-Mail [sales@theledstore.co](mailto:sales@theledstore.co)

### Bramford Tennis Club / Planning data



Maintenance factor: 0.80, Mounting Height: 4.250m, Boom Angle: 10.0° ,  
 ULR (Upward Light Ratio): 0.0%

Scale 1:460

#### Luminaire Parts List

No.	Pieces	Designation (Correction Factor)	Φ (Luminaire) [lm]	Φ (Lamps) [lm]	P [W]
1	8	The LED Store LST-SFL-300 LED Stadium/Sports Light 300w (1.000)	41514	41514	302.7
Total:			332115	Total: 332115	2421.6

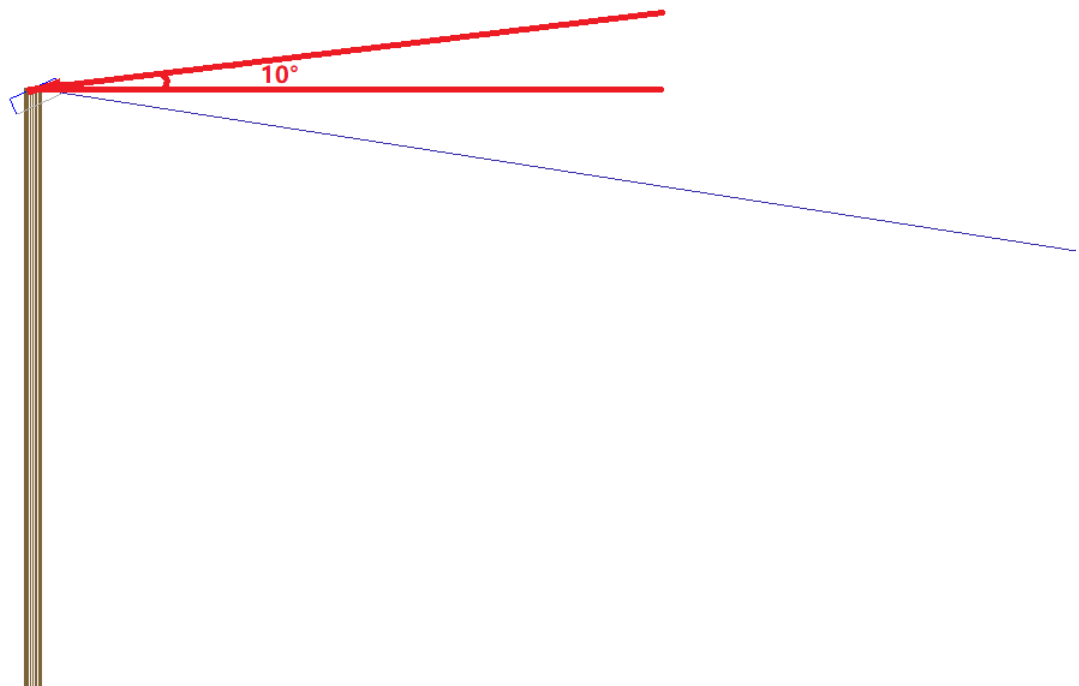
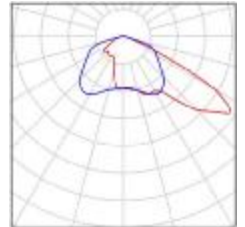


Operator The LED Store  
Telephone 03333 444 943  
Fax 03333 444 943  
e-Mail [sales@theledstore.co](mailto:sales@theledstore.co)

### Bramford Tennis Club / Luminaire parts list

8 Pieces The LED Store LST-SFL-300 LED Stadium/Sports Light 300w  
Article No.: LST-SFL-300  
Luminous flux (Luminaire): 41514 lm  
Luminous flux (Lamps): 41514 lm  
Luminaire Wattage: 302.7 W  
Luminaire classification according to CIE: 100  
CIE flux code: 36 78 98 100 100  
Fitting: 1 x LST-SFL-300 (Correction Factor 1.000).

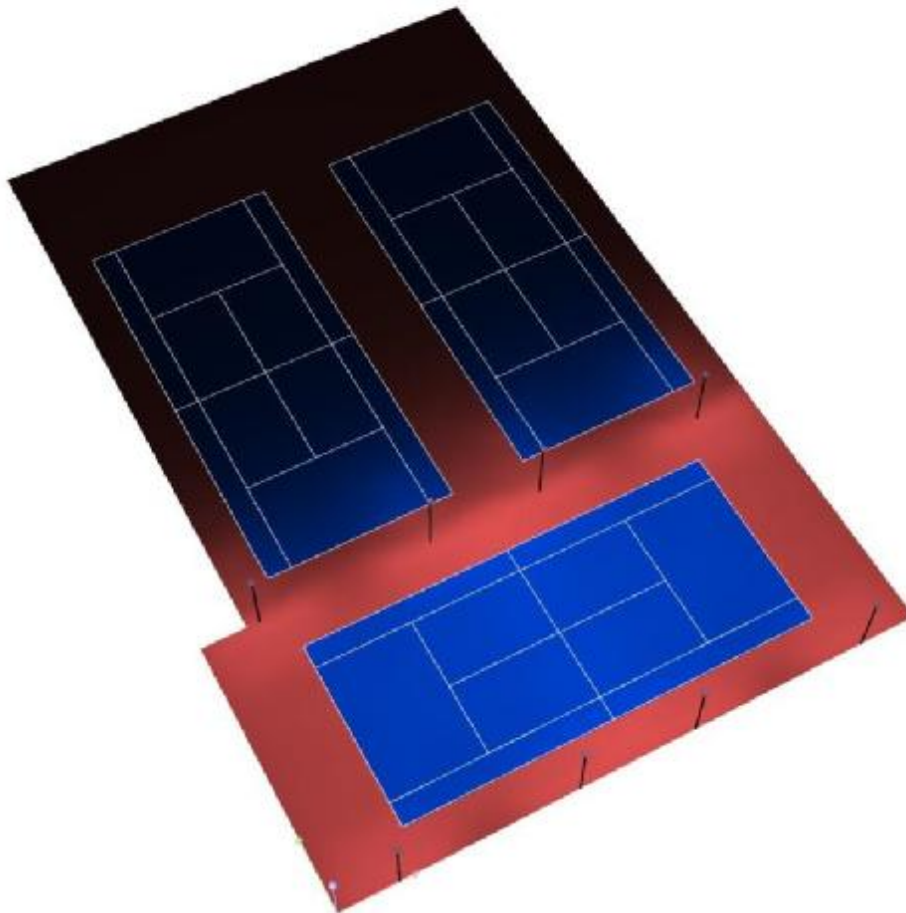
See our luminaire catalog for an image of the luminaire.





Operator The LED Store  
Telephone 03333 444 943  
Fax 03333 444 943  
e-Mail [sales@theledstore.co](mailto:sales@theledstore.co)

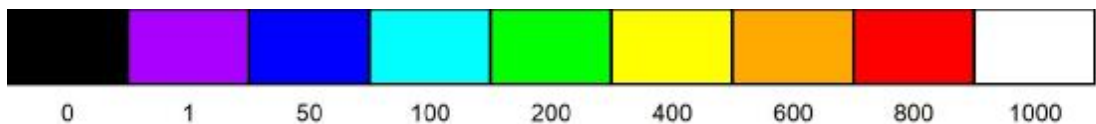
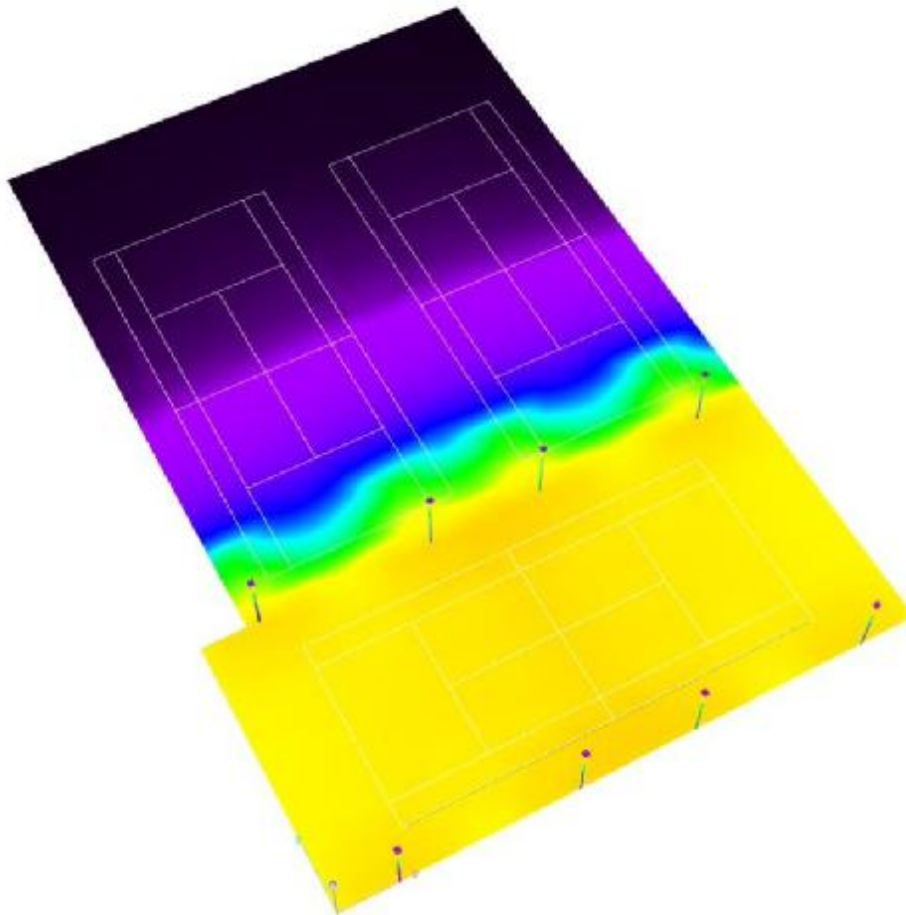
## Bramford Tennis Club / 3D Rendering





Operator The LED Store  
Telephone 03333 444 943  
Fax 03333 444 943  
e-Mail [sales@theledstore.co](mailto:sales@theledstore.co)

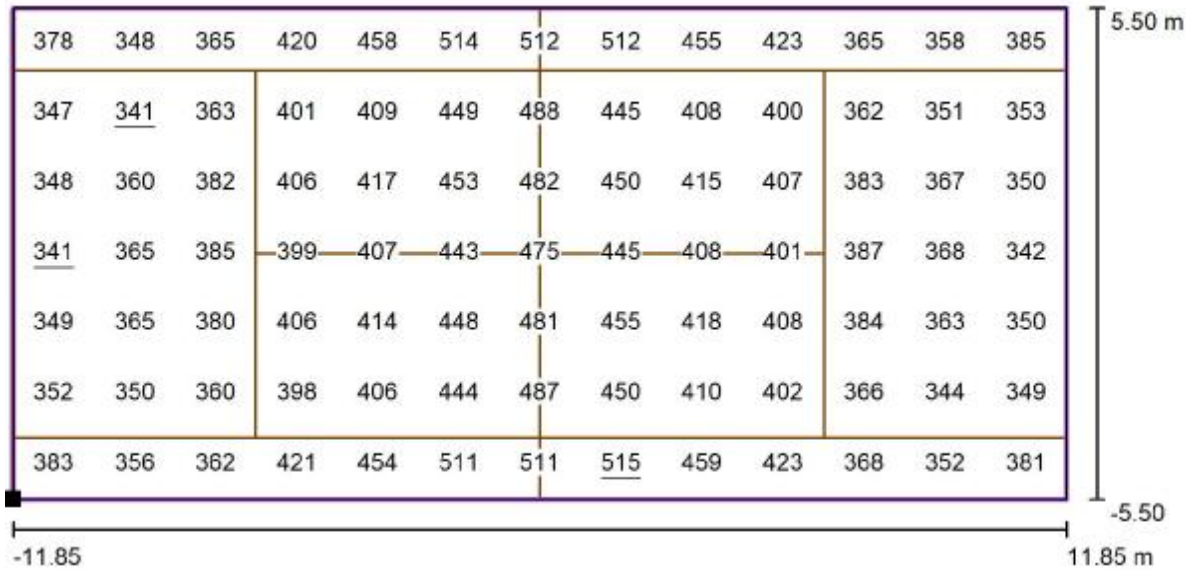
### Bramford Tennis Club / False Colour Rendering



lx

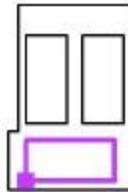
Operator The LED Store  
 Telephone 03333 444 943  
 Fax 03333 444 943  
 e-Mail [sales@theledstore.co](mailto:sales@theledstore.co)

### Bramford Tennis Club / Calculation Grid / Value Chart (E, Perpendicular)



Values in Lux, Scale 1 : 170

Position of surface in external scene:  
 Marked point: (4.670 m, 2.315 m,  
 0.000 m)



Grid: 13 x 7 Points

$E_{av}$  [lx]  
405

$E_{min}$  [lx]  
341

$E_{max}$  [lx]  
515

$u_0$   
0.84

$E_{min} / E_{max}$   
0.66