

# *A HISTORY OF CROFTSIDE TENNIS CLUB*



<b>Page number</b>	<b>Contents</b>
3-7	Where It All Began
8-10	1950 onwards
11-28	Good Times
29-37	New Courts Please
38	The Early 2000s
39-49	A New Clubhouse
50	Closing Note

## **Note**

This account of the history of Croftside Tennis Club has been pieced together from various sources including former and current members' recollections, committee minutes and memorabilia from over the years including several press cuttings.

It is very much a work in progress, and I apologise for any omissions or inaccuracies.

If you have any additional information about the club including photos, particularly from the period when court three was constructed, please share them with the club and I will update this document.

Thank you.

## Where It All Began

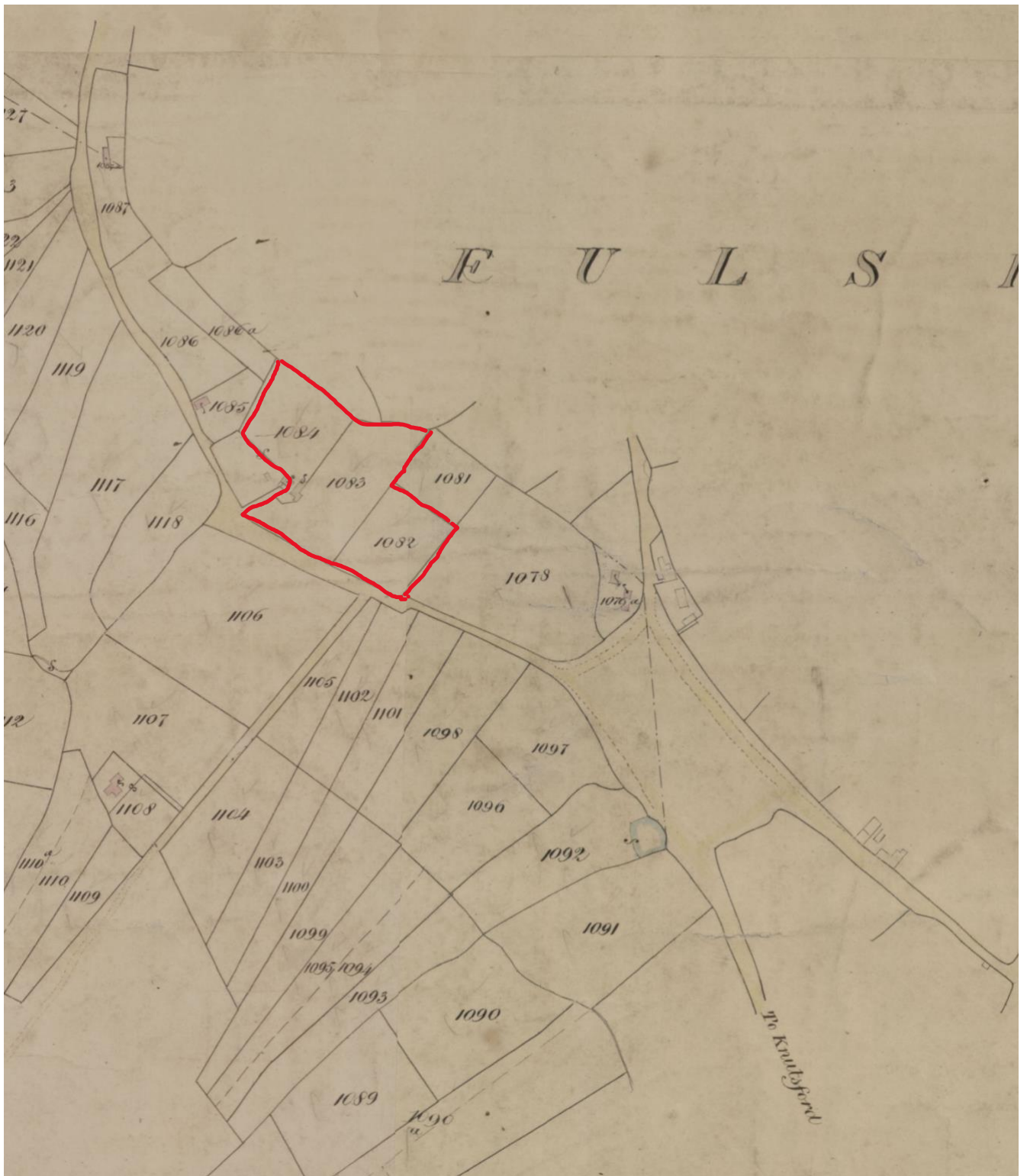
Croftside Tennis club is situated in the area which was once known as Pownall Fee South, Morley.

This features on the tithe map of 1842



Tithe Map 1842 Reprinted with kind permission from Cheshire Archives

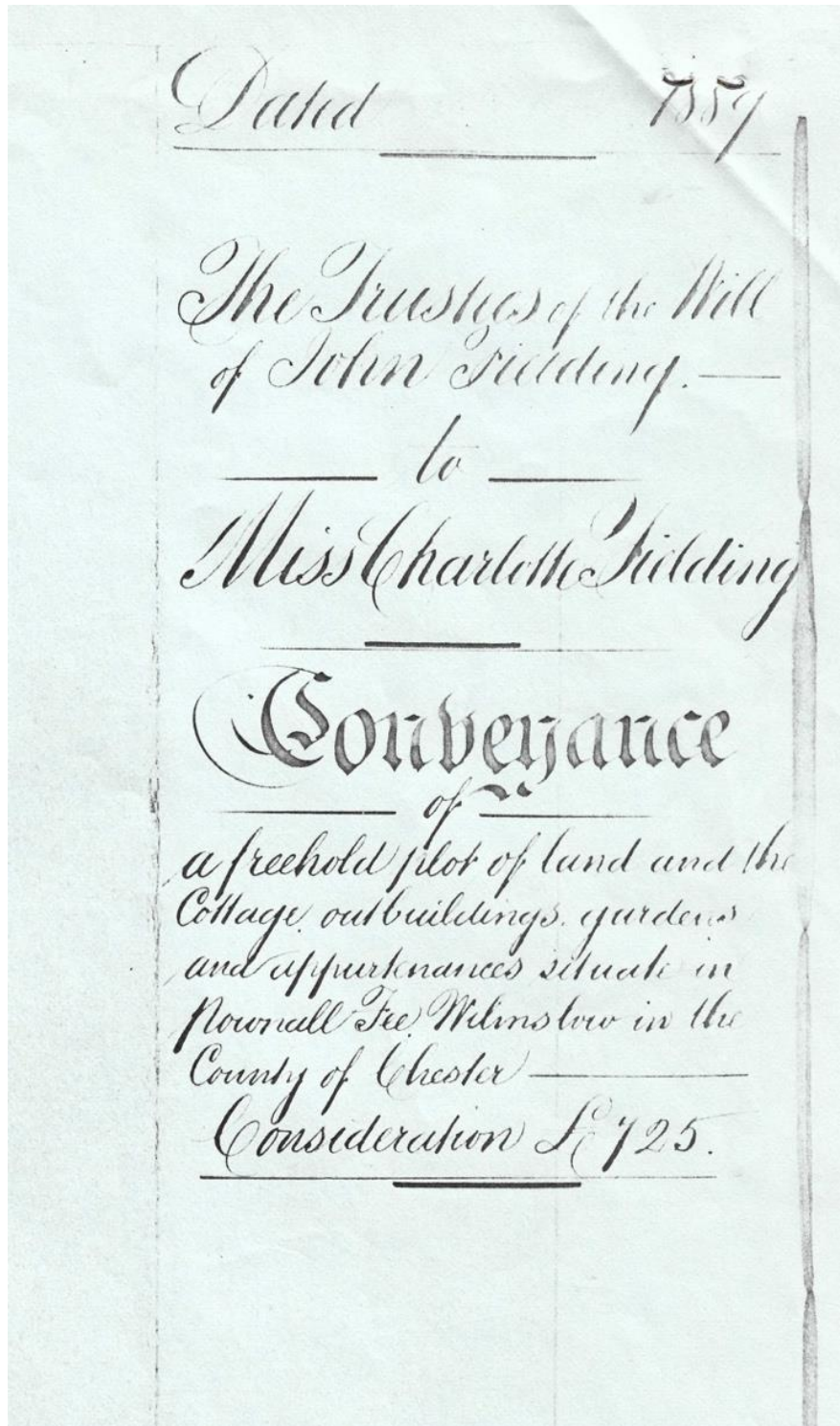




Close up of the plots from 1842 Tithe Map Reprinted with kind permission from Cheshire Archives

The plot was comprised of land known as 'The Homestead', 'Croft', 'Long Croft' and 'Lower Croft', and the owner was Sarah Robinson.

The land changed hands several times down the years. The will of one of the owners, Mr John Fielding, dated 12.03.1889 mentions the purchase price of £750 for this estate which by then included a cottage, several outbuildings, a garden and several parcels of land.



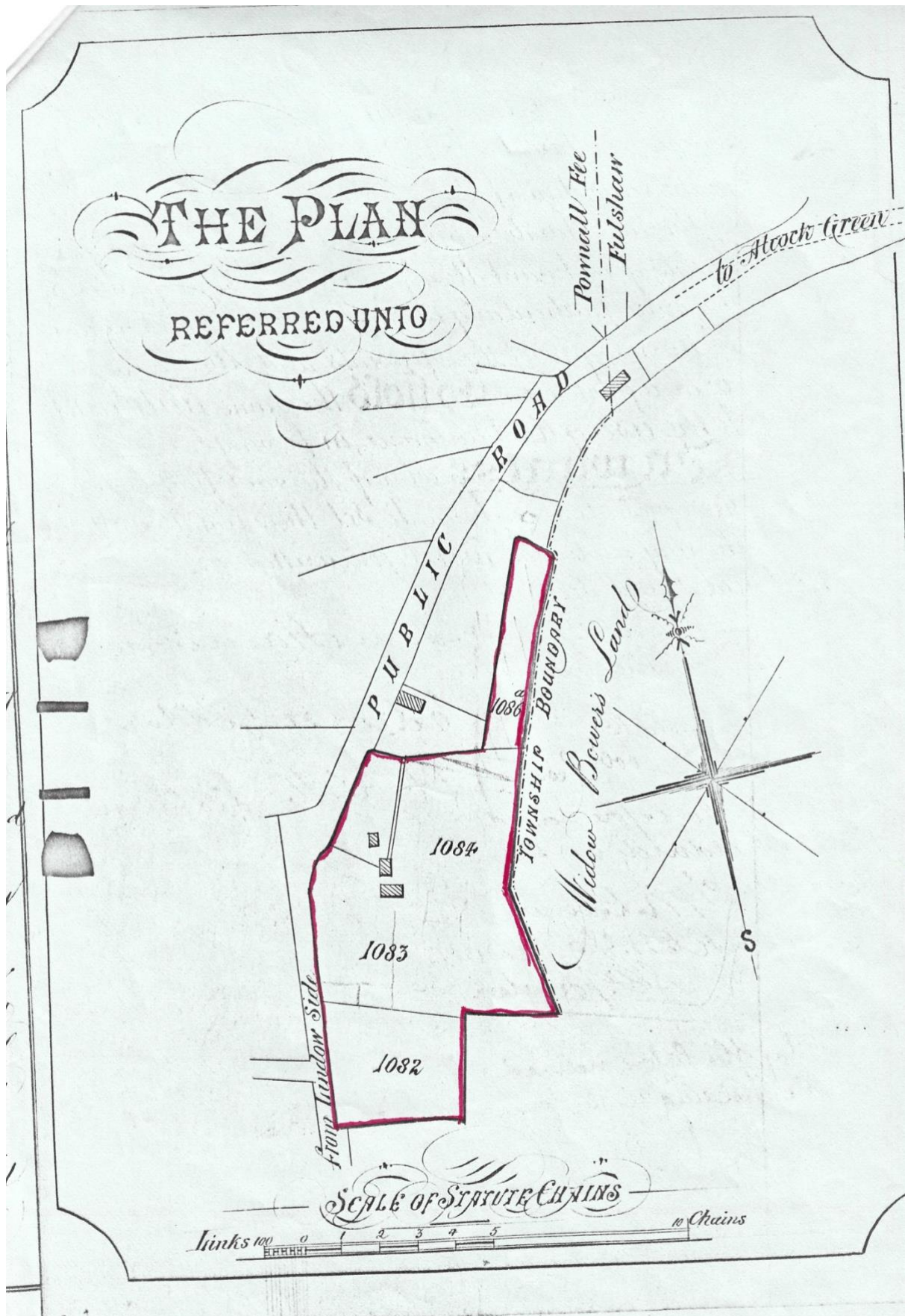
Dated 1889

The Trustees of the Will  
of John Fielding.—  
to —  
Miss Charlotte Fielding

Conveyance  
of —  
a freehold plot of land and the  
Cottage, outbuildings, gardens  
and appurtenances situate in  
Flowerall Tree, Wilmslow in the  
County of Chester —  
Consideration £725.

Conveyancing Documents Dated 1889





Conveyancing Documents Dated 1889 showing the tithe map numbered plots where Croftside is situated

In 1919 the estate was sold to Mr Arthur Boon. In (circa) 1922 an Arts and Craft style house called '*The Croft*' was built on the land and a tennis court was added in the southeast corner of the grounds. It is thought that initially the court was used solely by the owner and his friends for many years.

Former members of the club recall paying a subscription to use two courts in the 1940s and so another court must have been added in the intervening years. However, the exact date when Croftside became a club that was open to the public is not known.

## **New Trustees**

When Arthur Boon died in 1934, the estate remained within the family, being left to Elsie and Doris Boon.

Documents which are dated 27.05.54 refer to four appointed trustees of what, by then had come to be known as the 'Croftside Tennis Club'. The 2954 square yards of land included two tennis courts and a pavilion which was thought to have been built in around 1928. The documents set out the plan for the whole plot to be leased to the trustees for 21 years for £30 per annum.

Certain conditions were included in this agreement amongst which were the following: the courts were to be kept '*in good order, and free from weeds*'. Paths and netting were to be maintained and the pavilion was to be kept in good repair and painted '*at least once every five years with two coats of good oil paint*'

Conveyancing documents show that the lease ended in 1974 when the freehold to the land was bought by the trustees for £450.

## 1950 onwards

It was during the late 1950s and 1960s that the club really seems to have taken shape.

Annual tournaments took place with life members such as Mr and Mrs Crawshaw and Irene Pearson funding cups for the ladies singles, ladies doubles and the boys singles.

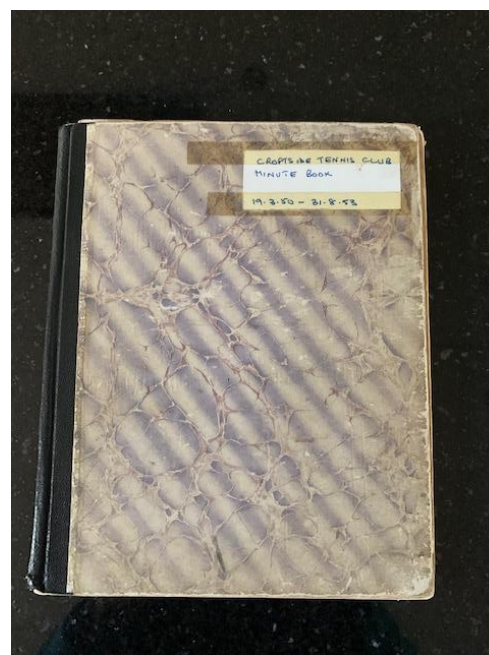
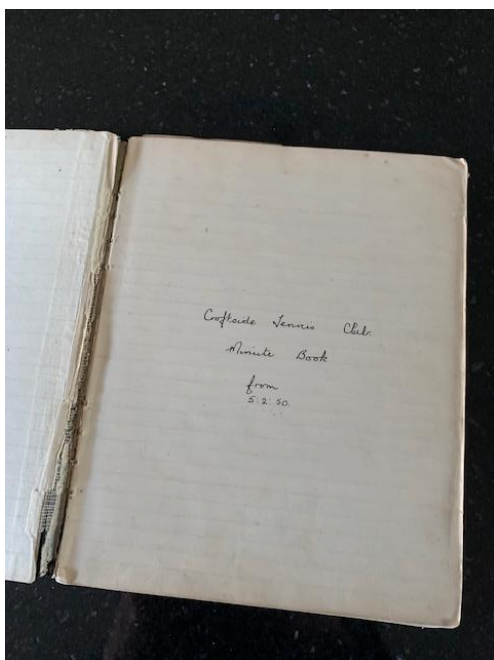


*Irene Pearson Cup for Ladies Singles*

In due course a men's team was formed to play league matches which, needing three courts, were played at the nearby Wilmslow Grammar School. The groundsman was a baker in the local Dean's Bakeshop which provided some post-match hotpot suppers, all duly served in the Croftside pavilion by the ladies. The nearest toilets were at the Horse and Jockey pub, the pavilion not being equipped with such luxurious facilities at that time.

Minutes dating back to the 1950s show that an active club committee was now in place.





The minutes mention numerous fundraising activities in aid of the club including raffles, hot pot suppers, sherry parties, bring and buy cake sales, coffee mornings, jumble sales at the Lindow Church Rooms and an annual dance in the Rex ballroom or Dean Row Village Hall. There is also mention of a joint supper dance with Heyes Lane Tennis Club at the Regal Ballroom in Alderley Edge.

It has been interesting going through the old committee meeting minutes to see the many differences in how the club was run back then:

- New members had to be proposed, seconded and accepted by the committee and all resignations of membership were read out at committee meetings
- Players were required to always wear white on court
- The courts were closed during winter months with the committee agreeing each year on an opening date around the end of March/beginning of April

## Membership

The minutes from the 1950s stated that the membership '*be limited to 72 players of whom not more than 12 shall be juniors*' (minimum age 14 years old) and '*6 be county members*' (residing outside of a radius of 8 miles, later lowered to 5 miles in 1962).

Other interesting entries include reference to a Wilmslow Tennis Tournament in honour of the Queen's Coronation in 1953.

Membership dipped a little in the early 1960s and the committee worked hard to welcome new members. The meeting minutes of 1963 report that there was even discussion of the club closing following several years of declining membership. Filling places on the teams was increasingly difficult especially the ladies' team. Several committee members left leaving

their positions vacant. It was decided that in the absence of any volunteers for the catering committee that *'the lady members of the teams should be responsible'*!

The children's coaching that took place at the club at this time was provided by members, notably Pam Walsh, Irene Pearson and Sue Case who all offered their time on a voluntary basis to try to encourage the junior members.

## Good Times

By the early 1970s it was clear that the hard work of the committee and the members had finally paid off. These decades were a time of real growth for Croftside with a thriving membership, success at county level, lots of team tennis and club tournaments.



*Junior shields depicting success in the North East Cheshire Lawn Tennis League in the 1970s*



*A successful decade for Croftside Ladies (who were still in NECLTL Division 4 in the early 1990s)*



Members of the Croftsidge Tennis Club pictured before their American Tournament on Sunday.

# Remarkable record for tennis club

**T**HE season started in fine style for Croftsidge Tennis Club on Sunday with an American Tournament at the club's courts at Meadow Way, Wilmslow.

The weather was unpleasant, with drizzle for most of the afternoon, but this did not deter those who competed.

There was a close contest for both prizes, Pam Walsh eventually taking the ladies prize and the men's being shared by Martin Trust and Norman Morrison. It is intended to hold American tournaments on the first Sunday of each month during the season.

The annual general meeting of the club took place on Wednesday last at the pavilion. Mr George Browning presided as Chairman for the last time as he resigned after holding the position for many years. He was warmly thanked for all his efforts and it was resolved that he be appointed president of the club.

#### EXPENDITURE

The treasurer, Alan Bird, reported unusually large expenditure during the year on the courts and on road charges so that it was not matched by

1971?

# Champions keep titles



Members of Croftside Tennis Club pictured during the club's Finals Day on Sunday. GY 293W.

**S**OME early morning rain gave way to a fine afternoon on Sunday to allow some exciting tennis to be played in the Croftside Tennis Club's finals.

Norman Morrison and Pam Walsh maintained their firm hold on the two main singles trophies with convincing displays, each winning in straight sets. Morrison's opponent was Eric Stevenson, a young player with some stylish strokes who is still improving. Stevenson overcame the tension to press Morrison hard on occasions, especially on his opponent's service, but Morrison's forceful shots took him to a 6-2, 6-4 win.

Mrs Walsh played Joan Kirkham in the ladies final. Joan is a new member at Croftside but one with considerable experience. Pat put on a confident performance and, though made to work hard in the first set in particular, she won through comfortably to take the match 6-2, 6-0.

### HIGH STANDARD

Stevenson had his chance for a win in the boys singles and beat Paul Godfrey 6-3, 6-2 in a match of a high standard. Angela Raven, another new member, won the girls singles by beating Sue Stewart 6-0, 6-1. Sue fought hard but Angela obviously has the potential to press the ladies hard in the senior event in future years.

Pam Walsh was partnered by Harry Banks to win the mixed doubles, beating George Parr and Connie Millington 6-1, 6-3. This match might well have been closer, but Banks and Mrs Walsh were in no mood for making mistakes.

Perhaps Parr was understand-

ably feeling the effects of a marathon match he had finished only a short time before when he beat Malcolm Bell in the final of the veterans (over 30s) singles, by 4-6, 6-3, 8-6.

This match lasted over two hours and produced thrilling tennis, with fortunes changing constantly. With the score at one set all, Parr took a 4-1 lead in the final set, only to see it disappear and to find himself 6-6 down. Bell had two match points in the next game but these were saved and Parr found some extra reserves of stamina to win that game and the next two for the match.

The chairman Mr John Domenet presented the trophies and Mrs Shelegh Domenet led the catering committee in preparing refreshments for the afternoon.

In a mixed match on Thursday evening, Croftside beat Pownall Park 9-0, thus revenging a defeat at their hand earlier in the season. The scores were (Croftside names first): Alistair Russell and Pam Walsh beat D. Nowell and Miss B. Grew 6-1, 6-0, beat J. Powis and Mrs H. Chibbett 6-3, beat D. Eglin and Mrs M. Martlew 6-0; Eric Stevenson and Shelegh Domenet beat Nowell and Grew 6-3, beat Powis and Chibbett 6-4, 6-0, beat Eglin and Martlew 6-1; Malcolm Bell and Angela Raven beat Nowell and Grew 6-2, beat Powis and Chibbett 7-5, beat Eglin and Martlew 6-2, 6-0.

## Brazil WORLD CUP JERSEYS

Exact replica of the Jersey made for the World Champions by Umbro International. Complete in every respect with the OFFICIAL BRAZIL BADGE.

CHEST 24in., 18/-; 26in., 18/-; 28in., 20/-; 30in., 20/-; 32in., 20/-; 36in., 25/-; 38in., 25/-.

Call in or have your Jersey sent **POST FREE**.  
Cheque or P.O. to:-

### GILBERTS (Sports) LTD.

**WATER LANE, WILMSLOW.**  
TEL: WILMSLOW 29221/2.

Printed by SWAIN and Co Ltd. and Published at their offices, High Street, Stockport, SK1 1EH. Tel. 061-480 5095 and 061-480 6581; 15 Water Lane, Wilmslow, SK9 5AF. Tel. Wilmslow 29553. London Road, Alderley in the County of Chester. London Office: 145 Fleet Street, London E.C.4. Tel. 01-FLE 0197.





MEMBERS of Croftside Tennis Club, Wilmslow with the trophies on display before the finals get under way YW 2723  
1975

# BEST TENNIS FOR YEARS IN BIGGEST EVER FINALS

**DESPITE** weeks of near incessant rain, the appearance of the sun last Sunday brought out a large crowd for Croftside Tennis Club's biggest ever finals day.

The addition of Mens and Ladies doubles competitions this year proved to be a great success and provided a greater degree of variety to the tennis enjoyed by players and spectators alike.

## INTRIGUING

The Ladies' Singles Final was between the former holder and top seed, Pam Walsh, and new member Marion Hall. The holder, Ghislaine White, was unable to defend her title this year because of injury. In the first set, Marion started rather tentatively but Pam quickly got into her stride to take it by a score of 6-2. The match lived up in the second set when Marion's variations of length, use of spin and speed around the court posed problems for her opponent and led to many intriguing rallies. However, Pam's greater control and pace of shot in the end enabled her to take the set by 6-3 and win the championship for the eighth time, a new club record.

## POWERFUL

In the Men's Singles final, there was a fascinating confrontation between the holder and number one seed, Malcolm Worrall, and the 15-years-old holder of the Boys' title, Brian Walsh, who had dismissed the second seed, Peter Davies, in the semi-final. Worrall relies heavily on a powerful service and a quick approach to the net, whereas the young left-hander builds his game around powerful ground strokes, particularly a vicious top-spin fore-

gled to get his first service in consistently and could not safely get into volleying position. In the event, Worrall won only one more game, the final score being 6-3, 6-0 for Walsh. In the second set particularly, Walsh hit a stream of the hardest-hit passing shots seen at the club for years and became the youngest player to put his name on the Mens' Singles Cup, being a year younger than Norman Morrison when he began his run of six wins, 12 years ago. This completed a family double, for Brian's mother had just received the Ladies' Singles trophy.

## TENSION

The closest and most entertaining match of the afternoon was the Mens' Doubles between Chris Dodman and Stuart Hall versus Maurice Davies and Billy Jordison. This went to three sets and the lead saw-sawed in the third. As the tension built up, there was some remarkable scrambling retrieving before Davies and Jordison won by 1-6, 6-3, 8-6. This was a very popular result because Maurice Davies has been a club stalwart for many years and although his son and daughter have won various events in the past, this was his first ever title.

In the Ladies' Doubles event, Anne Grievie and Pam Walsh played Sheila Hampson and Irene Pearson. The match was characterised by many long rallies, but the greater weight

Stuart and Marion Hall. The Halls raced to a 6-0, 5-1 lead, and the end seemed nigh. In fact, the Halls never even reached a matchpoint in the second set as their opponents staged a spectacular recovery, winning six games in a row to take the second set. However, Stuart and Marion recovered their composure to run through the third set quickly and win the match by the curious score of 6-0, 7-5, 6-0.

## QUALITY

The Boy's Singles Final was between the top seeds, Michael Pearson, runner-up last year, and Neville Mass. Brian Walsh had elected not to defend his title. This was a match of the highest quality, both juniors producing their best tennis on the big occasion. Michael held a slight edge throughout and his steadier all-round play brought him to a 6-2, 6-4 win. With youngsters of this calibre the future at Croftside looks bright.

In the Girls' Singles event, the former holder Carol Pearson, faced new member Hilary Keogh who had eliminated the holder, Nicola Hampson in the semi-final. Carol, who has captained the very successful junior team so well for the past two years, seemed unable to find the form of which she is

capable. Hilary's willingness and ability to chase and return her opponent's best shots took her to a 7-5, 6-3 victory.

The trophies were presented by the Club President, many-times former Men's Champion, Harry Banks.

The July Croftside Finals Day was a highlight not only in members' calendars but also for the local community and was often featured in the local press as shown above.

As the club only had two courts at this time, no men's or ladies' doubles matches feature on finals day and it is not known if there was a draw for these.

Finals Day matches were overseen by members volunteering as umpires and line court judges. The strawberry teas that were provided on the day must have completed the SW19 feel to the tournament. It attracted quite a crowd in those days as you can see in the photo below from 1973.



*Croftside Finals Day 1973 Brian Walsh boys' singles champion. And a good crowd!*



*Croftside Finals Day 1975 The finalists.*

In the photo above you can see the Croftside finalists gathered around the trophy table wearing their whites and holding their wooden racquets.

The umpire's chair is just visible in the background on the left-hand side of the photo.



*Croftside Finals Day 1975 Ladies singles finalists*



*The trophy table and Croftside tournament finalists (year unknown)*



Several members enjoyed great success in the club tournament over many years. In this press article from 1987, Pam Walsh and Norman Morrison feature yet again as club champions with a record 10<sup>th</sup> win for Pam in the ladies' singles.

52 EXPRESS ADVERTISER, JULY 2, 1987 W

**CARPETS**  
Quality Plains and Patterns  
Measuring and Estimating Service.  
Fitted by our own staff.  
**COUNTRY HOME FURNISHING CO.**  
Showroom at:  
39 CHAPEL LANE, WILMSLOW  
0625 527949/528991

**WILMSLOW**

# Express Advertiser

**Gilberts**  
**CHECK OUT THE LEADERS**  
IN MENSWEAR, BOYSWEAR, SPORTSWEAR & EQUIPMENT.  
**V INTERSPORT**  
WATER LANE, WILMSLOW, CHESHIRE.  
TEL: (0625) 529221

Finalists at the Croftside

## Pam wins top title

TENNIS SPECIAL

**DESPITE** two weeks of indifferent weather, the Croftside tournament was successfully concluded on Sunday with a fine display of tennis from all the finalists.

The ladies' singles title was won by Pam Walsh for a record 10th time and the men's singles was won by Norman Morrison, returning to the club after living in the south for several years to regain the title he held for six years in a row between 1966 and 1971.

Pam Walsh also took the ladies' doubles title, playing with Rosemary Reid who, with Anthony Oldham, won the mixed doubles event.

Barry Grieves and Richard Hammond took the men's doubles trophy in a hard fought match over three sets.

There were also outstanding performances from the juniors, with Anna Hooper taking the girl's singles title and Nick Easingwood winning the boy's singles.

**EXPRESS LOANS**

**LOW COST**

Any purpose £1,000-£10k For Homeowners And Mortgage Payers

**TURN YOUR EXISTING EXPENSIVE LOANS, CREDIT CARDS ETC. INTO ONE EASY PAYMENT**

**NOTHING TO REPAY FOR 4 MONTHS**

Ask for details of this Sever Plan

WEEKLY EQUIVALENT REPAYMENTS	
APR	AMOUNT
	10,000 180.54 155.50 144.31 137.93
	8,000 144.43 124.40 115.45 110.34
	6,000 108.32 93.30 86.62 82.76
	4,000 72.21 61.22 56.72 54.00
	2,000 36.10 30.62 28.36 27.01
	1,000 18.05 15.31 14.18 13.51
	500 9.03 7.66 7.09 6.76

FOR FAST FRIENDLY PERSONAL SERVICE AND IMMEDIATE DECISION

**0800 61 67 61**

EXPRESS FINANCE 84 CROSS ST. SALE, CHESHIRE M33 7AN

Member of Corporation of Finance Brokers

Wilmslow Express Advertiser 1987. Pam Walsh pictured with shield (with kind permission of Reach plc)

Finals Day was still going strong well into the 1990s. By now the club had its own logo and members could purchase Croftside sweatshirts and t shirts.





*Croftside Finals Day 1991 – note the Croftside branded kit!*



*Bunting and trophies*



*Croftside Finals Day (1993) Ladies Doubles Winners Pam Walsh and Alison Dyke*

The Finals Day Order of Play can be seen pinned to the noticeboard outside the old pavilion on the right-hand side behind Alison.

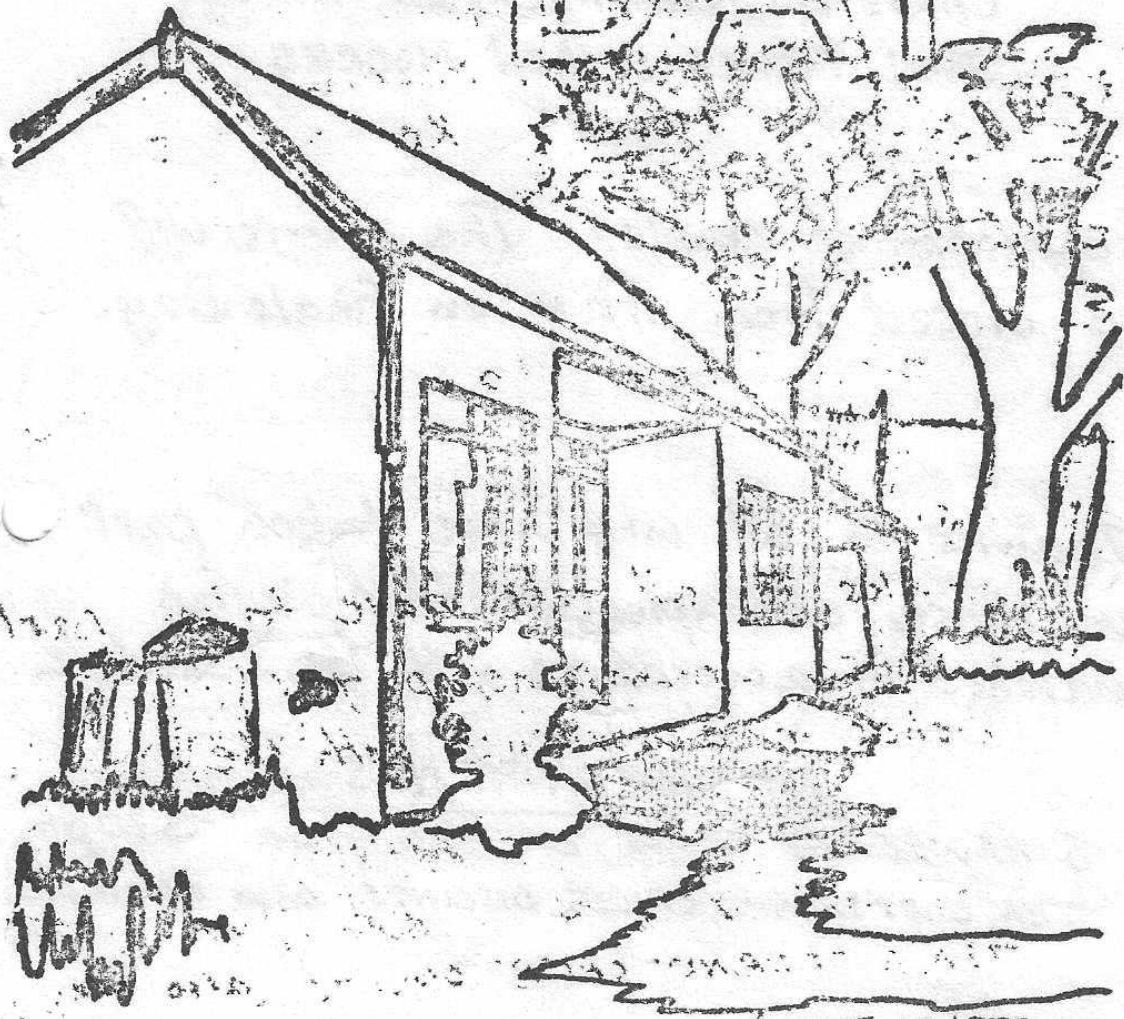
Programmes were printed for those attending finals day which was usually held on a Sunday in late June or early July.

The programmes started as small A5 leaflets. The example from 1975 below features a line drawing of the pavilion on the front cover.

# CROFTSIDE TENNIS CLUB

# FINALS

# DAY



JULY 1975

*Croftside Finals Day Programme 1975 Front Cover*

The following officials will assist.

UMPIRES

IRENE PEARSON: DON CRAWSHAW;  
RICHARD CRAWSHAW · JOHN DOMENET

LINE JUDGES

VAL CRAWSHAW: SHELAGH DOMENET;  
SHEILA HAMPSON: CONNIE MILLINGTON;  
NAN MOLES: MAURICE DAVIES;  
CHRIS DODMAN: MICHAEL HERD;  
JOHN MOLES: KEN MOORES

Preparation of courts. The courts will be closed from 11am on Finals Day.

Thanks to all who have taken part in these championships for playing matches in accordance with the schedule.

REFRESHMENTS

STRAWBERRY TEAS on sale from 3.30pm.  
TEA, SOFT DRINKS, CRISPS, BISCUITS, also available.

FINALS DAY 1975  
6th JULY 2.30pm

1. GENTLEMEN'S SINGLES (Holder: - Martin Trust)  
MARTIN TRUST v ERIC STEVENSON
2. LADIES' SINGLES (Holder: Pam Walsh)  
NAN MOLES v PAM WALSH
3. JUNIOR MEN'S SINGLES (Holder: Colin Walsh)  
COLIN WALSH v PAUL DOMENET
4. MIXED DOUBLES (Holders: Pam Walsh and Peter Herd)  
SHELAGH DOMENET and MARTIN TRUST v HELEN WHITCOMB and ERIC STEVENSON

THE JUNIOR LADIES' SINGLES was played on Wednesday 2nd July.

Result: PAM DAVIES (holder) beat CAROL PEARSON 6-0: 6-1

Croftside Finals Day Programme 1975 contents

In time the Finals Day programmes became more elaborate and comprehensive as shown below in the A4 programmes from 1979 and 1980. It is thought that the tradition of the printed programme continued until at least 1995.

The full draw for each of the singles and doubles draws were included in the programme, all neatly hand drawn.

A comment about the weather- and its impact on the tournament- was always included and the umpires were named in the 'Order of Play'.



179

# CROFTS 1979



SUNDAY 8<sup>th</sup> JULY

START 2:00 P.M.

REFRESHMENTS  
AVAILABLE

# FINALS DAY

Croftside Finals Day Programme 1979 Front Cover



1979 has seen another very successful and enjoyable Croftside Championships. Seventy-three members entered at least one of the competitions and many entered two, three or even four. The weather has been kind and the competition has been able to proceed steadily towards today's finals. Players and spectators have both enjoyed the play, a feature of which has been the large number of three set matches and sets settled by a tie-break, all indicating the keen competition. One notable match was a mixed doubles Quarter-Final which was only decided after 40 games and 12-10 final set.

The number of entries is slightly down compared with 1978 and the small numbers entering the Ladies Singles competition and the Girls Singles competition are particularly disappointing.

The smooth running of such a competition needs the co-operation of everyone especially if we are to allow a measure of flexibility to fit in with people's other commitments. Most people were very helpful in making arrangements for matches and this is much appreciated.

Also appreciated:- Sue Case and ladies who made catering arrangements on the first Sunday and who will serve teas today. B.L and J.M who helped make the score boards. All those who have worked on the grounds to make them look as neat as they do.

ORDER OF PLAY - Start at 2.0pm

Court 1	Men's Singles Final	Umpire - John Moles
	Brian Walsh v Malcolm Worrall	
Court 3	Girl's Singles Final	Umpire - Irene Pearson
3pm approx	Hilary Keogh v Niki Hampson	
Court 1	Ladies Singles Final	Umpire - Pam Walsh
	Marion Hall v Nan Moles	
Court 3	Boy's Singles Final	Umpire - Brian Grieve
4pm approx.		
Court 1	Ladies Doubles Final	Umpire - Sheelagh Domenet
	Joan Hampson & Pam Walsh	
	v	
	Joan Kirkham & Carol Pearson	
Court 3	Mens Doubles Final	Umpire - Don Crawshaw
	Malcolm Bell & Chris Dodman	
	v	
To follow	Brian Grieve & Brian Walsh	
Court 1	Mixed Doubles Final	Umpire - Malcolm Bell
	Stuart Hall & Sheila Hampson	
	v	
	Brian Walsh & Judy Cocker	

LADIES SINGLES 1979

1st ROUND	QTR-FINAL	SEM-FINAL	FINAL
	MARION HALL	MARION HALL	MARION HALL 7-5, 6-2
J KIRKHAM v A GRIEVE	JOAN KIRKHAM 2-6, 6-3, 7-5	3-6, 6-3, 6-1	
H KEOGH v A PARKER	ANN PARKER 6-2, 6-4	ANN PARKER	
N HAMPSON v H RUSSELL	NIKI HAMPSON 6-4, 6-1	2-6, 6-4, 6-4	NAN MOLES 7-5, 6-1
S FOWLES v B LANE	SYDNEY FOWLES 6-0, 6-0	SHEILA HAMPSON	
J HAMPSON v S HAMPSON	SHEILA HAMPSON 7-5, 6-3	7-5, 4-6, 6-2	
S CASE v C PEARSON	CAROL PEARSON 6-3, 6-3	NAN MOLES	
	NAN MOLES	6-4, 6-2	

GIRLS SINGLES 1979

HILARY KEOGH v NICKI BOLSOVER	HILARY KEOGH 6-2, 6-1	HILARY KEOGH 6-1, 6-1
YVONNE FARR v KATE PERCIVAL	YVONNE FARR 6-3, 6-3	
HELEN COCKER v ELIZABETH GODLEY	HELEN COCKER 7-6, 7-5	NIKI HAMPSON 6-1, 6-0
SUE BARTON v NIKI HAMPSON	NIKI HAMPSON 6-1, 6-1	

BOYS SINGLES 1979

1st ROUND	2ND ROUND	QTR-FINAL	SEMI-FINAL	FINAL
		MICHAEL PEARSON	MICHAEL PEARSON	
N CRAWSHAW v R WORTHING	NIGEL HOUGHTON v ROBERT WORTHING (w/o)	NIGEL HOUGHTON	6-0, 6-0	
A CRAWSHAW v S COLEMAN	MARTIN GRIEVE v SCR.	MARTIN GRIEVE w/o		
C FERGUSON v J COCKER	CHRIS FERGUSON (w/o) v DAVID SMITH	DAVID SMITH 6-0, 6-0		
	JOHN BOLSOVER v STEPHEN BUTTERWORTH	STEPHEN BUTTERWORTH 6-2, 6-2	STEPHEN MOSS	
		STEPHEN MOSS	6-2, 6-2	
	BARRY GRIEVE v TIM KEOGH	BARRY GRIEVE 7-6, 6-2	BARRY GRIEVE	
		PHIL WINNINGTON	3-6, 7-6, 6-2	

Croftside Finals Day Programme 1979: the draw for the ladies', girls' and boys' singles

MENS SINGLES 1979

1ST ROUND	2ND ROUND	QUARTER-FINAL	SEMI-FINAL	FINAL
	B Walsh	B Walsh		
	D Smith	6-0, 6-0	BRIAN WALSH	
	M Pearson	M Pearson	6-1, 6-1	
R Davies R Winnington	R Winnington 6-2, 6-0	6-2, 6-3		BRIAN WALSH
S Hall C Dodman	C Dodman w/o	D Case		6-2, 6-3
D Case P Bolsover	D Case 6-3, 6-1	6-3, 6-7, 6-3	JAN STZUKOWSKI	
J Stzukowski M Davies	J Stzukowski 6-2, 6-3	J Stzukowski	6-1, 6-0	
D Crawshaw P Domenet	P Domenet 6-3, 6-1	6-2, 6-1		
D Godley K Worthing	D Godley 7-6, 2-6, 7-5	D Walsh		
P Holland D Walsh	D Walsh 6-4, 6-1	6-2, 6-4	MALCOLM WORRALL	
N Moss P Winnington	N Moss 6-0, 6-4	M Worrall	6-4, 6-2	
P Keogh M Worrall	M Worrall 6-4, 6-0	6-1, 6-1		MALCOLM WORRALL
	F Godley	F Godley		7-5, 6-2
	M Bell	w/o	PETER DAVIES	
	M Grieve	P Davies	6-0, 6-0	
	P Davies	6-2, 6-1		

Croftside Finals Day Programme 1979 showing the draw for the men's singles.



**CROFTSIDE  
800m**



SUNDAY 6<sup>th</sup> JULY  
START 2.00 P.M.

REFRESHMENTS  
AVAILABLE

**F  
I  
N  
A  
L  
S  
  
D  
A  
Y**

*Croftside Finals Day Programme 1980 Front Cover*



CROFTSIDE CHAMPIONSHIPS 1980

Once again Finals Day is here and we would like to welcome you all, and hope that you all have a very enjoyable afternoon - weather permitting of course.

This year the number of people who have enjoyed the competition of the last two weeks has been in every event fewer than last year - with the exception of the boys and girls singles competitions which could be a healthy sign for the future. In view of the weather, perhaps the fewer numbers have been a blessing in disguise. To those of you who were present on the first Sunday and 'sailed' home several times during the day - extra thanks for your patience and a general thankyou to all people who rearranged times to fit in with the demands of this competition.

ENTRIES

	<u>1979</u>	<u>1980</u>
Mens Singles	25	22
Ladies Singles	14	10
Mens Doubles	14couples	11couples
Ladies Doubles	12couples	10couples
Mixed Doubles	23couples	21couples
Girls Singles	8	12
Boys Singles	16	19

-\*

ORDER OF PLAY      COMMENCE AT 2.0.p.m.

Court 2	Ladies Singles Final	Umpire - Connie Millington
	Ghislaine White v Nan Moles	
Court 3	Boys Singles Final	Umpire - John Moles
	Martin Grieve v Gordon Lane	
-----		
Court 1	Mens Singles Final	Umpire - Peter Davies
	Brian Walsh v Michael Pearson	
Court 3	Girls Single Final	Umpire - Irene Pearson
	Susan Barton v Laura Procter	
-----		
Court 2	Mens Doubles Final	Umpire - Dennis Walsh
	Bob Farr & Gordon Lane	
	Malcolm Bell & Colin Hampson	
Court 3	Ladies Doubles Final	Umpire - Anne Grieve
	Ghislaine White & Helen Russell	
	Connie Millington & Judith Schofield	
-----		
Court 1	Mixed Doubles Final	Umpire - Frank Godley
	Ghislaine White & Jan Sztukowski	
	Jackie Oldham & Brian Walsh	

## New Courts Please

Court three was added to Croftside in July 1976. The land on which it was built was a piece of rough grassland belonging to the club that members had used for parking.

Sadly, there are no photos of the club showing just the two original courts nor of the construction of court three. All that remains is a letter dated 15<sup>th</sup> July 1976 from the solicitors acting for clients local to the club which was sent to the Chief Planning officer of the then Macclesfield Borough Council.

In the letter it states that, provided that certain conditions were respected, the clients had no objection to the re-siting of the third court *'in the interests of good neighbourliness, and as they have no desire to prevent the Tennis Club members enjoying the facilities.'*

Construction went ahead, and the addition of a third court was a cause for celebration for club members; teams could now finally play their league matches on home soil and everyone could enjoy more court space. Nearby rivals Lindow Tennis Club, who were one of the strongest clubs in the North East Cheshire League at this time, had five courts so the addition of Croftside's third court was a welcome 'levelling up'.

In 1999, the three shale courts were all resurfaced with the AstroTurf that is still there today. New netting was installed, and the old wooden gateways and posts were replaced with green metalwork.

Once again, club members pulled together to fundraise for the court resurfacing by holding jumble sales and other events. Some members offered interest free loans to the club whilst others bought 'forward' subscriptions for membership to help finance the courts. Meanwhile committee members such as Bob Farr (who oversaw the resurfacing work) and Rick Megginson were busy putting in applications for funding to enable the work to be carried out. They were successful in securing a grant from the Foundation for Sport and the Arts for the princely sum of £31,500.

The resurfacing was a timely improvement to the club since the old shale courts were becoming increasingly waterlogged due to the wet weather. Matches were frequently postponed or cancelled and the premises in general were in need of a makeover.



*Court three floods again*



*Broken netting on courts one and two*



# Rain stops play





17 August 1999 - The resurfacing work begins as the old courts are dug up





Drainage materials are laid and new posts are planted





28 September 1999- the surface is rolled ready for the AstroTurf





The new posts are installed and the rolls of AstroTurf arrive





12th October 1999- the sand arrives by tanker and is sprayed onto the new court surface



23<sup>rd</sup> October 1999 and the new courts are opened



*Mike Rodwell, who was Chairman of Croftside, receives a cheque for the court resurfacing in 1999*

## The Early 2000s

By the early 2000s club membership was declining and the average age of members was rising. The men's tennis team continued to play in the league but the ladies' team ceased to exist due to lack of players and junior tennis dwindled.

By 2008, the number of senior members dropped to just 38 with even fewer juniors. Such was the severity of the situation that the committee held an extraordinary general meeting to discuss how they might handle the sale of the site if the club should have to fold.

Thankfully, the committee did not give up easily, resolving to keep the club open for as long as they could and deciding to have a recruitment drive aimed at young families. They asked the Cheshire LTA to recommend a young coach and Tom Hunt was recruited. Next, they approached the primary schools offering family membership deals, and every Saturday morning committee members would support Tom's coaching sessions and encourage parents to join the club.

Membership snowballed. Social events were arranged, and many parents of junior members dusted off their racquets and returned to tennis in Tom's 'Rusty Racquets' classes. The North East Cheshire Ladies' tennis team was resurrected in 2014 and a couple of years later a second ladies' team was added, playing in the South West Manchester League.



*The new Croftside kit*

By 2017 there were numerous junior teams, 3 men's and two ladies' teams, a new kit and a busy calendar of coaching for all ages. The club became a limited company and it was clear that the time had come for another significant update of the facilities, this time in the form of a new clubhouse. A grant was secured from Sport England and ICE Architecture were appointed to work with the committee to design the new building.



## A New Clubhouse

By the time it was finally demolished the original Croftside pavilion was nearly ninety years old. It was looking the worse for wear with subsiding wooden floors and leaks in the roof.



*The old Croftside tennis pavilion*



The demolition begins...



The new foundations are dug and the first bricks are laid





Brick by brick the new building takes shape



The roof goes on





The windows and doors are installed



Work starts on the interior



Meanwhile outside the windows are finished and preparations for the decking are underway



A final coat of paint in the kitchen area and ...





Mission accomplished!





The grand opening with MP Esther McVey 9 July 2017



In 2019 LED lighting was added to courts one and two enabling coaching and play to continue for longer during the winter months.



*Floodlights*

With the help of the local community, a defibrillator was purchased and installed on the side of the clubhouse in 2019.



## **Closing Note**

At the time of writing, Croftside Tennis Club currently has a thriving membership of 327 members

There are twenty-one junior teams, four men's teams and two ladies' teams. Plans are afoot for the resurfacing of the courts to bring the surface up to a better standard and the committee, as always, is working hard to keep the club running smoothly.

There are far too many names to mention here but we owe a huge debt of gratitude to all the people who have volunteered their time over the years to make Croftside Tennis Club what it is today.

Thank you. And here's to the next 100 years!

Marg Charlesworth  
December 2022