



**Members Handbook  
2024/2025**



# Contents

1. Table of contents	2
2. Chairperson's Welcome and Club Mission	3
3. Welcome to New Members	4
4. Social Tennis	5
5. Tennis Coaching	6
6. Club Memberships	7
7. Introduction to Competitive Tennis	8
a. Men's Tennis	8
b. Ladies Tennis	8
c. Junior Tennis	8
d. Tennis Tournaments	9
8. Padel Tennis	10
9. Court Bookings and Floodlights	11
10. Club house & Bar	12
11. Members Etiquette	13
12. Committee Members	14
13. Social Committee Members	15

# Chairpersons Welcome

## Welcome to Grappenhall Village Lawn Tennis Club (GVLTC)

A warm welcome to new club members and thanks to existing members for supporting GVLTC for another year. Tennis is such a great sport and can be played by all ages. It's a great way to exercise your mind and body and studies have shown that the social benefits of playing tennis are great for your mental health too.

I hope you find this member handbook both useful and informative. It has been developed to support our members in terms of club etiquette and procedure and in recognition that, as we grow in size, we also need to grow in other ways to accommodate our membership needs by providing the best possible facilities and making tennis accessible to all. Your feedback and input to the club is essential to help us continue to do that and our committee meet regularly throughout the year to represent your interests. Please do feel free to email me to submit any general feedback on [committee@gvltc.co.uk](mailto:committee@gvltc.co.uk)

## Our Mission

Offering our local community accessible, welcoming, friendly and enjoyable participation in tennis.

## Values - Our Pillars

- **Accessible** – making the journey to tennis an easy one by providing inclusive access to tennis for all abilities ages and levels of fitness. Our aim is to break down barriers to tennis participation.
- **Relevant** – to make tennis modern, fresh, fun and exciting! Leading the way with providing new angles such as Padel tennis, as well as the modern established game.
- **Welcoming & Friendly** – ensuing that all members and visitors to the club feel like they 'belong and fit in". Everyone is welcome regardless of ability, age or social background.
- **Enjoyable** – providing a positive, uplifting and exciting experience for both social tennis and competition match play. Having a great time on court with friends can be as important as being 'great" at the game!

## Welfare at GVLTC

Steve Yates is our Welfare Office. Please feel free to contact Steve at any time should you feel you would like to raise a welfare or safeguarding issue. His contact details are clearly displayed around the courts.



We might not be league leaders for our tennis (all the time) but we have a great reputation for being one of the most hospitable clubs in the league. We enjoy regular weekly social play and many of our members provide the best post-match baked refreshments around. Our clubhouse social activities are a huge focus for development this year.

I hope you enjoy your time at the club, and I look forward to seeing you on the court.



Madeline Holder  
Chair, GVLTC

# New Members

We would like to thank you for becoming a member of the club. We are proud to be able to invite you to play with other new members as well as our more established and experienced players. This includes access to weekly social tennis as well as competitive tennis for all ages and levels.

We are an LTA affiliated and Tennismark+ accredited tennis club run by and for our members.

We currently have 8 courts, 6 artificial grass and 2 hard courts. Floodlights are available on 5 of these courts for all year-round tennis. To accommodate players from other clubs without these facilities we also offer a cheaper winter only membership. We also now have two Padel courts, the first in Warrington, bookable via the Matchi app. Social tennis is available to book to get to know other players and learn how to play Padel.

## Club and Social Tennis

We have a variety of options on offer such as social tennis, floodlight leagues and mini tournaments over the course of the year.

## League Tennis

As a club, we compete in the summer and winter Warrington District League, the East Cheshire Winter league, the Cheshire Winter League for Juniors and the Cheshire National League for Juniors.

## Coaching

Our club coaches can be booked for private lessons and group coaching. Head Coach James Cleaver and Coach Steve Garbutt's details can be found in the coaching section on page 6.

GVLTC also offer Padel coaching, details of which can be found on page 10.

## Junior Tennis

We have a very active and successful junior coaching programme that runs throughout the year and during school holidays. This is open to members and non-members on a pay as you go basis.

## How to find us

Grappenhall Village Lawn Tennis Club

Stockton Lane, Grappenhall, Warrington, Cheshire. WA4 3HQ

**PLEASE NOTE** - *There is no access to the club by car via Lumbrook Rd as Stockton Lane is blocked by a gate. Please enter Stockton Lane from the East via Church Lane.*

# Social Tennis

## Social Tennis

Self-organised social tennis is available each week. All members are welcome to attend and do not need to book. Please ask to be added to our player WhatsApp group as members regularly check in with each other to see who's coming along.

This will help you to play tennis with other members and will help you to meet, socialise and team up with other players for either doubles or singles practice.

Mixed social tennis - Friday from 3pm to 6.30pm

Men's social tennis and team practice - Monday at 6pm to 8pm (from April to September)

Mixed social tennis – Saturday 9.30am am to 12pm

Floodlight tennis – Tuesday and Thursday 7pm to 8.30pm (winter timetable)

As you become more confident as a player, you may wish to ask about playing in the club teams and we would encourage you to do this as we have team players of all levels. Team captain's details can be found on page 8.



# Tennis Coaching

Coaching is available for all players of all ages and abilities. For enquiries about group or individual coaching please email [coach@gvltc.co.uk](mailto:coach@gvltc.co.uk) or contact our coaches below:

## Coaching Team



### Head Coach

James Cleaver

Mobile - 07714 339947



### Coach

Steve Garbutt

Mobile - 07976 226392

Saturday	9 – 10 am	Age 7 - 10
Saturday	10.15 – 11am	Age 4 – 9 – starter course for children new to the game*
Sunday	9 – 10am	Age 8 – 12
Sunday	10 – 11am	Age 5 - 8
Monday	4.30 - 5.30pm	under 15's
Monday	4.45 - 5.45pm	Age 8 to 11
Tuesday	4.30 - 5.30pm	Age 11 - 13
Wednesday	4.00 - 5.00pm	Age 5 - 11
Wednesday	5.00 - 6.00pm	Age 9 - 12
Wednesday	6.00 - 7.00pm	Age 10 – 16 – starter course for girls*
Thursday	4.30 - 5.30pm	Age 15 - 18
Thursday	4.45 - 5.45pm	Age 11 - 14
Friday	4.30 - 5.30pm	Age 4 – 9 – starter course for girls*
Friday	4.30 – 5.30pm	Age 10 - 12

\*FREE RACKET BALLS & T SHIRT WHEN YOU ENROL ON THESE COURSES

For more information about any of the above or to enquire about holiday tennis for school holidays or to be added to one of these groups please contact the coaching team on [coach@gvltc.co.uk](mailto:coach@gvltc.co.uk).



# Club Memberships

We offer a selection of membership options which are detailed below and bookings can be made via the club website at [www.clubspark.lts.org.uk](http://www.clubspark.lts.org.uk)

Club memberships will run from 1<sup>st</sup> April 2024 to 31<sup>st</sup> March 2025, with the exception of our Winter Membership package. Please visit <https://clubspark.lta.org.uk/GrappenhallVillageLawnTennisClub/Membership/Join> to become a member.

Be sure to sign up for British Tennis membership at [www.lta.org.uk](http://www.lta.org.uk)

For Membership enquiries please contact our Membership Secretary, Mike Hood [committee@gvltc.co.uk](mailto:committee@gvltc.co.uk)

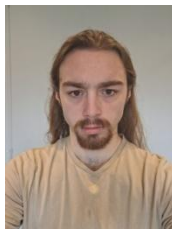
Membership	Description	Annual Cost	Payment in 4 Instalments
Senior	For individuals 18+ not in full time education	£160	£41.60
Family	For 2 seniors and 2 juniors	£375	£97.50
Student	For individuals 18+ years of age on 1st Jan 2024 who is in full-time education	£90	£17.55
Junior	For juniors 12-18 years old on 1st Jan 2024	£52	N/A
Junior with Parent / Guardian	For juniors 12-18 years old on 1st Jan 2024 with a senior member	£40	N/A
Juvenile	For juniors up to age 11 years old on 1st Jan 2024	£30	N/A
Country	For individuals over 18 living more than 20 miles away from the club	£100	£26
Upgrade Package	Upgrade for existing members to include match fees, floodlight fees and visitor fees for 12 visits. For more information visit <a href="http://www.GVLTC.co.uk">www.GVLTC.co.uk</a>	£65	N/A
Non Playing Social Member	Adult, non tennis playing member (can play up to 5 times providing relevant match fees are paid)	£30	N/A

# Competitive Tennis

We welcome new members wishing to play competitive tennis. Please to contact any of the captains below and they will be able to help. Team captain listings can also be found on the Warrington and District Lawn Tennis Association website [www.wdlda.com](http://www.wdlda.com)

## Mens Tennis

Ewan Robertson captains the men's teams and can be contacted on 07788 175221



## Ladies Tennis



Suzanne Robertson captains the 1<sup>st</sup> and 2<sup>nd</sup> ladies teams. Suzanne can be contacted on 07900 068950

Jane Seger captains the 3<sup>rd</sup> ladies team. Jane can be contacted on 07890 600001



Sabine Power captains the 4<sup>th</sup> 5<sup>th</sup> and 6<sup>th</sup> ladies teams. Sabine can be contacted on 07925 800342

## Mixed Tennis

Team	Team Captain	Contact
Mixed Doubles	Jane McNamara	07958 583856
Over 45's Mixed Doubles	Mike Hood	07801 735748

## Winter Tennis

Team	Team Captain	Contact
Grappenhall Mixed 1	Suzanne Robertson	07900 068950
Grappenhall Mixed 2	Jane Winter	07871 747898
Grappenhall Mixed 3	Kerry Billington	07711314375
Grappenhall Mixed 4	Suzanne Longworth	07815 573832

## Other Tennis

Team	Team Captain	Contact
Knock out	Mad Holder	07770 592589
Warrington Open Tournament	Mad Holder	07770 592589
Warrington Winter League (1 <sup>st</sup> & 2 <sup>nd</sup> )	Mike Hood	07801 735748



## Junior Tennis

We have a thriving junior section with players of all ages and standards. There are weekly coaching sessions throughout the school term and camps during the holidays as well as opportunities to play in matches for the keener players. We enter teams into the National Summer and Winter Team events and juniors can also take part in our box league competition where they play against children of a similar age and standard.

This year, for the first time, the club are offering an upgrade to junior membership which allows parents to play with their child. This is a great chance for parents to have a go themselves whilst giving their child invaluable practice time. See 'Upgrade Package' under Club Memberships.



## Tournaments

The club organises regular American tournaments throughout the year and an annual handicap event in September. As a club we also run tournaments in the Scala leagues. These are open to all members throughout the year. We're also welcoming the Open tournament, which has attracted players from all over the North West in previous years.

There's also a floodlit league which is an internal competition played on Tuesdays and Thursdays throughout the winter (7pm to 9pm). Details of all events will be sent out in our monthly newsletter.

**Check out our notice board for club tournaments and competitions.**



# Padel Tennis

GVLTC Padel courts are now open & available for booking. Padel is a racket sport that combines elements of tennis and squash. It is a fun, sociable and very accessible game as players of all ages and abilities will get the basics of the game within the first half an hour of playing.

Strategy is more important than power and strength in Padel therefore physical abilities do not guarantee a win!

Padel is played in doubles on an enclosed court surrounded by walls of glass and metallic fence. The court's dimension is 20mx10m. The ball used is very similar to a tennis ball, just a bit softer.

The serve is underarm with a bounce and has to land in the service box. The ball has to hit the court first to be "in" but it can then bounce off any wall or fence. Points can be scored when the ball bounces twice in the opposition's side. Scoring is the same as tennis.



Improver Coaching sessions are can also be booked using the same link. Private coaching can be booked through Freddy Garbutt on 07484 161721.

You can book a court or sign up to one of the Social Padel sessions

<https://www.matchi.se/facilities/game4padelgrappenhall>





# Court Bookings and Floodlights

## Court Bookings

Court Bookings can be made via the GVLTC website [www.GVLTC.co.uk](http://www.GVLTC.co.uk)



Court Bookings can be made at half hourly intervals for a maximum of 2 hours. If you reserve a court and your plans change, please do remember to cancel the court booking to enable other members to book and play.

Non-members can also book a court via the website for £12 per hour

## Floodlight Bookings

The club has 8 courts, 6 artificial and 2 hard courts. Courts 1, 5 and 6 of the artificial surface courts have floodlights. Hard courts 7 and 8 also have floodlights. Token cost £5 and provide one hour of floodlight play.

Tokens can be purchased from:  
Mad Holder (07770 592589)  
Steve Garbutt (07976 226392)  
Kerry Billington (07711 314375)



# Clubhouse and Bar



The clubhouse is the hub of the tennis club and caters for members of all ages.

Facilities are available for a relaxing drink, snacks and social get-togethers after both social tennis and team matches.

The clubhouse will open after social tennis, where applicable and for organised club events throughout the year.

We are planning a number of social events throughout 2024 and members will be notified by our club newsletter and email of upcoming events. We sincerely hope you will be able to join us.

We are always looking for Volunteers to help staff the club house. If you feel you would be able to offer up 3 hours every 6 to 8 weeks please contact Sharon on 07990 532 774

## Open Events

BBQ's  
Open Days  
Championship Events  
Quiz Nights



# Members Etiquette

## GVLTC Match Etiquette and court maintenance (includes social tennis and use of booked courts).

**In order to ensure Health & Safety and to help members adhere to the LTA rules on play, please find below a list of general member etiquette points to provide some consistency during both social and competition play.**

- It's a WDLTA rule that if there is a dispute over a line call then the ultimate decision lies with the player(s) whose side the ball fell on. If a dispute remains, then it is common compromise is to replay the point with 1st serve though, especially if no one is clear.
- Don't walk across a court or behind it if someone is playing a point. Wait until the point is over, even if you need to reclaim a ball.
- Please arrive on time for matches. Introduce yourselves to your opponents on arrival and shake hands after finishing the match.
- Please check that the height of the nets is set correctly before you begin play.
- All home match players are to buy their last opponents played a drink before leaving, providing the away team players want a drink. If you have to leave promptly then you are expected to contribute to the cost of one drink. Further drinks are purchased at your own discretion.
- To ensure the courts are safe for play, please clear any rubbish or leaves off the courts with the Aussie clean sweeps and remove them from the courts prior to play. Rehang the Aussie clean sweep back on the fence.
- Also ensure all rubbish, even if it's not yours is removed from the courts at the end of play and ensure the gate is padlocked.
- Put the balls used back in the clubhouse.
- Please ensure that the clubhouse bar and social area are clean and tidy before leaving.
- Pay your match fees (collection is the responsibility of team captain or an allocated team player)
- Team captains will organise players to take it in turns to provide fresh milk, biscuits, and cakes at each home match event. Alternatively, the team can organise a 'kitty' to cover these costs if they wish. Please organise within your own teams.
- Please ensure dogs are kept on leads at all times around the clubhouse and courts and kept away from food and drinks.
- Please ensure children are supervised at all times.

# Committee Members



Madeline Holder  
Chair and  
President



Kerry Billington  
Treasurer



Suzanne Longworth  
Secretary



Mike Hood  
Membership Secretary



Steve Yates  
Safeguarding Officer



Jane McNamara  
General Member



Steve Kaut  
General Member



Neil Gwilliam  
General Member



Suzanne Robertson  
Ladies Captain



Sabine Powers  
Ladies Captain



James Cleaver  
Head Coach



Steve Garbutt  
Coach

## Annual General Meeting (AGM)

The committee hold an Annual General Meeting in October each year. Details of the last AGM to have taken place can be found at [www.gvltc.co.uk/events/2023AGM](http://www.gvltc.co.uk/events/2023AGM)

The club welcomes members to join the management committee as “General Members’ and we also welcome volunteers for ad hoc involvement should a more regular commitment be too much.

Bright ideas and suggestions are welcomed by the committee and can be left in the Bright Ideas box next to the disabled toilet or emailed as below.

If you wish to contact any member of the committee please email [committee@GVLTC.co.uk](mailto:committee@GVLTC.co.uk)



# Social Committee Members

GVLTC has an active social committee made up of volunteers. The committee are responsible for running the bar in the clubhouse as well as organising events. The committee is led by Sharon Jones, previous Chair of the GVLTC committee who can be contacted on 07990 532 774.

Members of the committee include



Sharon Jones



Madeline Holder  
Chair of GVLTC



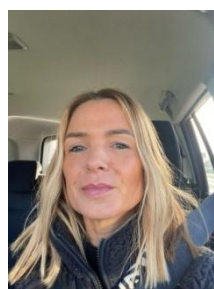
Anne Whitehead



Amanda Acton



Lisa Ward



Liz Jones

Events planned for 2024 include the below however additional events may be added so please check regularly on the notice board or follow us on FB @ [www.facebook.com/gvltc](https://www.facebook.com/gvltc)

13 <sup>th</sup> & 14 <sup>th</sup> April	Padel Launch Day
15 <sup>th</sup> & 16 <sup>th</sup> June	Warrington Open
23 <sup>rd</sup> June	Boozy Balls, Buffet and Live Music
13 <sup>th</sup> July	Wimbledon Social Tennis and BBQ
14 <sup>th</sup> September	Family Social Games
12 <sup>th</sup> October	Darts tournament with hot pot and pies
22 <sup>nd</sup> November	Wine and Cheese Tasting
15 <sup>th</sup> December	Tinsel Tennis