



Club Future Membership Consultation

23rd December 2020



Contents

- HWTC Vision
- Options for the Future
- Requesting your feedback
- Next steps

HWTC Vision



To continue being a sociable and friendly club which welcomes tennis players of all standards and ages within the local area

To grow club membership and engagement by:

- Increasing junior membership via a wide-range of options for play
- Increasing adult membership by extending facilities for daytime and year-round play
- Having facilities which promote safe play and sociable opportunities, for the benefit of members and the wider community



How could we realise our Vision?

By raising funds for a capital investment programme to allow us to:

- Extend facilities to increase hours of play (from 2 to 3 courts plus addition of floodlights)
- Provide a Clubhouse with basic facilities and opportunities to socialise

By increasing awareness and club participation:

- Working closely with volunteers, coaches, HW Parish Council and local businesses



Doubling club membership by end 2025

When	Adult Members		Junior Members		Total
	Male	Female	Male	Female	
Now *	133	92	46	41	312
End 2025	266	184	92	82	624

** Estimated breakdown as incomplete details on age/gender in ClubSpark*

Options for the future - Summary



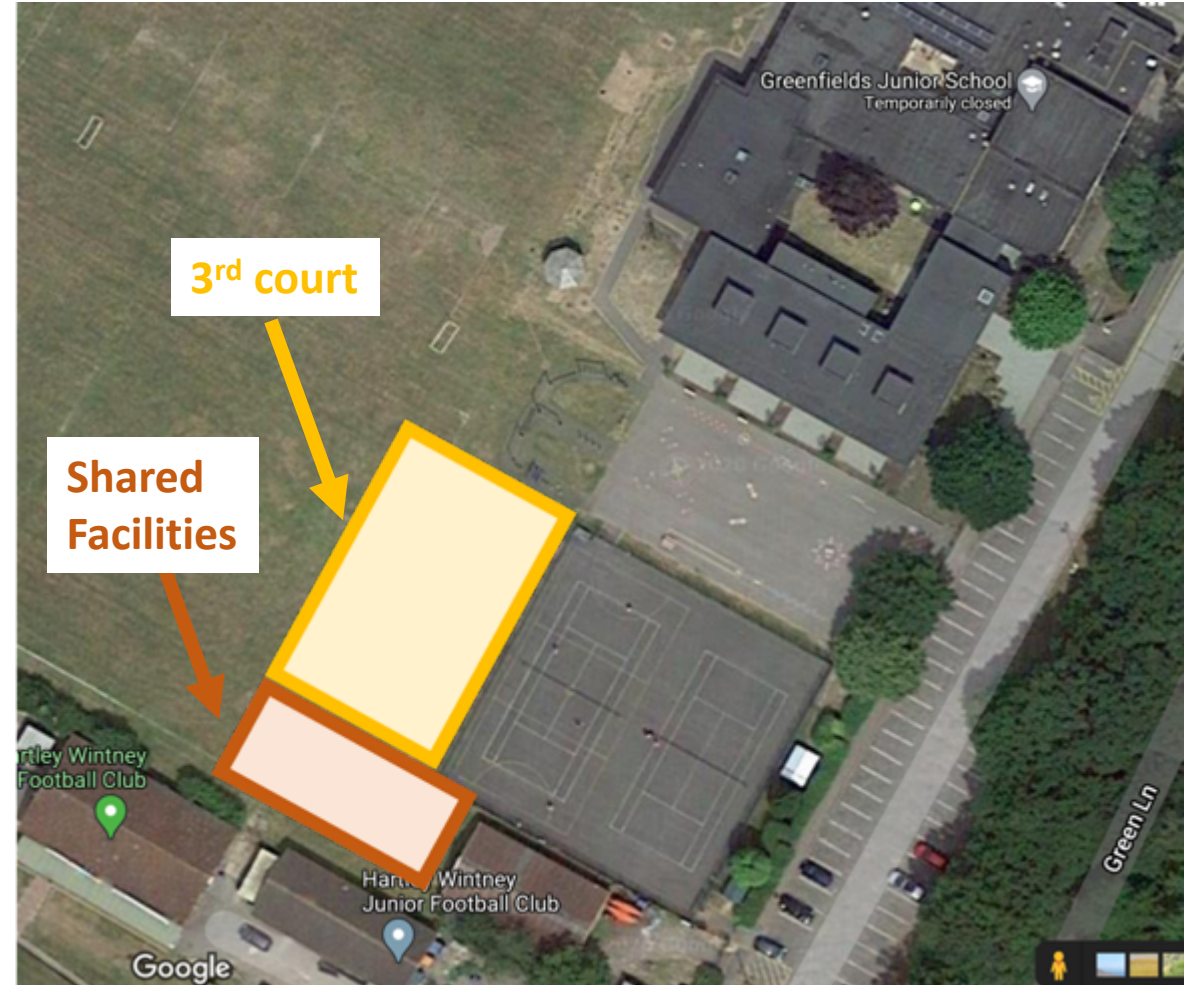
	Do Nothing Stay as today	Option 2 Extend at Greenfields School *	Option 3 New facility at St Mary's Park
What this means	<ul style="list-style-type: none"> - No floodlights - 2 courts - No facilities 	<ul style="list-style-type: none"> - Floodlights - 2 or 3 courts - Access to revised Scout Hut facilities 	<ul style="list-style-type: none"> - Floodlights - 3 courts - Access to clubhouse
Access to hours of play per annum	5,500	6,500 (2 courts) or 9,900 (3 courts)	15,300

** Highly dependent on discussions with Greenfields early 2021. Not possible in 2020 due to Covid-19.*

Option 1 – Extend at Greenfields School



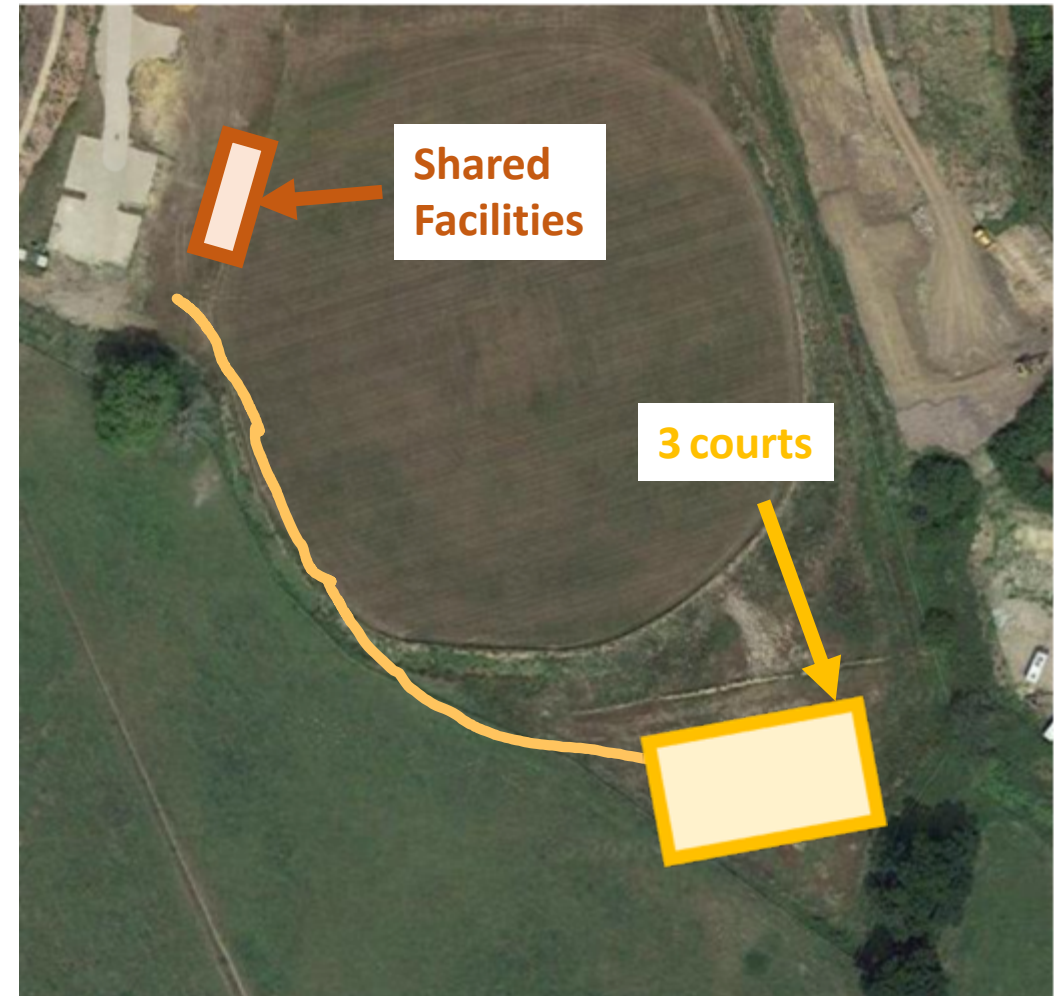
- An additional court and revised fencing
- Floodlights, upgraded surface, repaint lines
- Extend Scout hut to provide limited HWTC facilities (toilets & social space)
subject to further discussions with HW Scout leaders
- Some additional access for play during school hours to be discussed
- Cost estimate: £100 to 130k (scope dependent)





Option 2 – New Facility at St Mary’s Park

- 3 courts with fencing & floodlights
- Access to the pavilion for car parking and facilities (toilets & social)
- Cost estimate £150 to 180k (groundworks risk tbc)



Options for the future - Assessment



	Do Nothing Stay as today	Option 2 Extend at Greenfields School	Option 3 New facility at St Mary's Park
Investment /Fundraising	LOW	MEDIUM TO HIGH	HIGH "All in" commitment
Project complexity / Risk	LOW	HIGH Many parties involved	MEDIUM
Pros	Centre of village Little/no effort	Centre of village Potential to phase funding	Dedicated 7 dpw facility Proper Clubhouse Community sports facility
Cons	School hrs limit play No clubhouse	School hrs continue to limit play Limited Clubhouse	Outskirts of village Access for works and groundworks risks tbc Limited parking at peak times

Requesting your Feedback!



Please can you email your feedback and/or speak to a Committee member:

- Do you support the Vision?
- Which (if any) Option do you prefer and why?
- Any questions or suggestions?

Next Steps

