

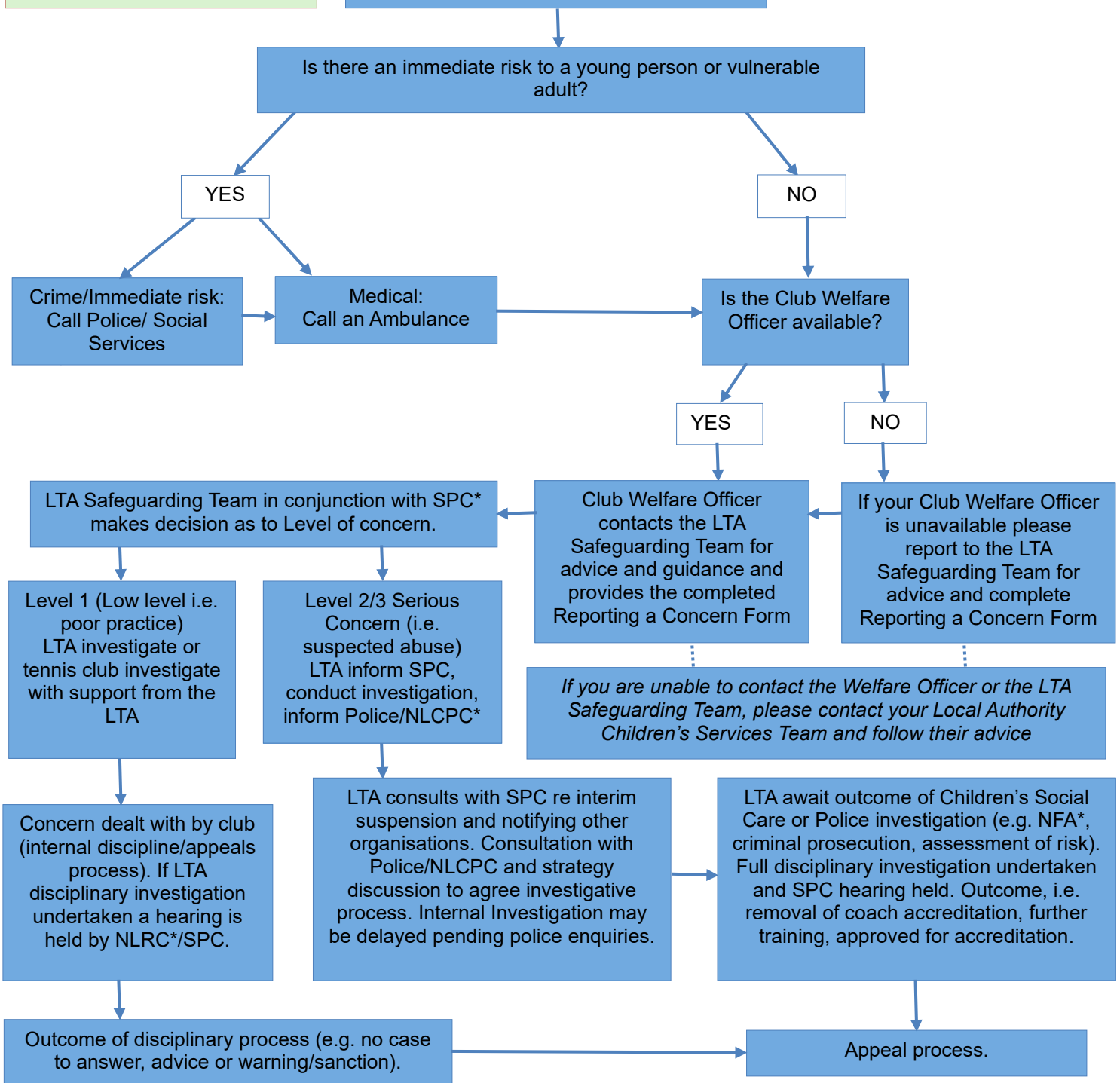
Safeguarding Policy: Reporting a Concern within the Tennis Environment

Useful Contacts

LTA Safeguarding Team: 020 8487 7000; safeguarding@lta.org.uk
 NSPCC: 0808 800 5000
 Childline: 0800 1111
 Emergency Services: 999

Concerns arise about the behaviour of a member of staff, coach or volunteer towards a child/children or adult/adults. Make a note of anything you/the witness has seen/said, with dates and times

Note: You should inform the parent/carer of the concern, unless you believe it would put the child/adult at risk, yourself or others at risk



- *SPC – Safeguarding and Protection Committee
- *NLRC – North Lanarkshire Regulatory Committee
- *NLPCPC – North Lanarkshire Child Protection Committee
- *NFA – National Fostering Agency