

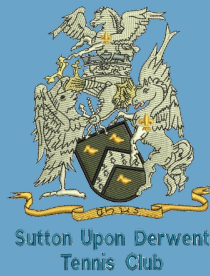


Court Lighting Consultation Document

SUTTON UPON DERWENT TENNIS CLUB

DECEMBER 2023

PROPOSAL



The purpose of this document is to share plans for the tennis club with local villagers before selecting a preferred lighting option and submitting a planning application.

The document aims to outline plans for lighting the tennis courts to provide a year round facility for members of the club.

The committee is seeking to provide a cost effective solution that provides suitable lighting whilst minimising the impact on local residents.

Any feedback can be emailed to us at: tennis@suttontennisclub.co.uk

We'll be collating all feedback on the 8th January 2024.



Why are we engaging with you now?

As a neighbourhood club set in the heart of the village we recognise how important it is to ensure that we have open lines of communication about any changes which may affect you.

We are engaging with you before we submit a formal planning application in order to assist us in minimising the impact on neighbours and to find the best solution and approach in lighting our courts.



WHY DO WE NEED LIGHTING?

We love playing tennis and currently we can't do this all year round

- As the committee of the Tennis club we are always looking for ways to protect the long term future of our club.
- In order to offer a high level of facilities (as you can see with the grass courts). The club is making minimal profit each year. We need to attract more members and find more ways to generate income to secure our future.
- From a coaching perspective it's incredibly difficult attracting a coach who currently can only operate fully 6 months of the year. The floodlights will allow coaching to carry on throughout winter for juniors and adults. Currently coaching is limited to the village hall throughout winter. This is a second best option and only really works for juniors up to around 8 years of age.
- As a community club we look to provide a place for people to improve their physical and mental wellbeing

THE COURTS



Sutton Upon Derwent
Tennis Club



OUR OPTIONS



TWEENER LED SYSTEM



LIGHTING PILLARS (10 Meters High)



PROS & CONS

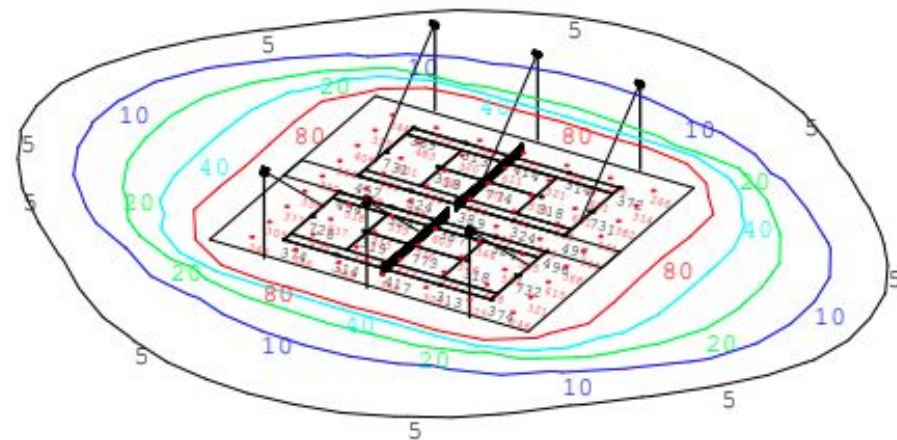


OPTION	PRO	CON
TennisPro LED 750NB floodlights	<ul style="list-style-type: none">• Good quality lighting• 5 Year Warranty• Known lighting for planning• Widely used and tested across tennis community	<ul style="list-style-type: none">• Expensive• Metal columns unattractive• Visible during both during the day and when lit at night• Ongoing maintenance costs
Tweener LED Lighting (Double solution)	<ul style="list-style-type: none">• Lower Up Front Costs• Energy efficient• Cheapest running costs• 5 year guarantee• No maintenance costs• Suitable for residential area• Most likely to be approved• Ease of fitting	<ul style="list-style-type: none">• Lower LUX than some options (suitable for recreational / club tennis)

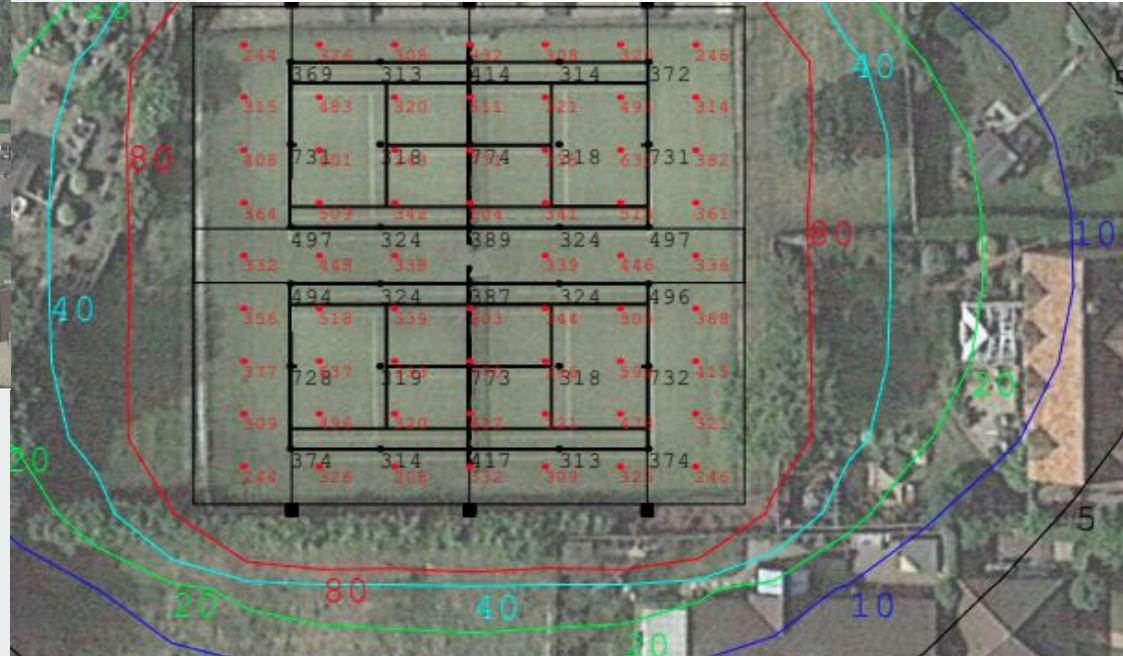
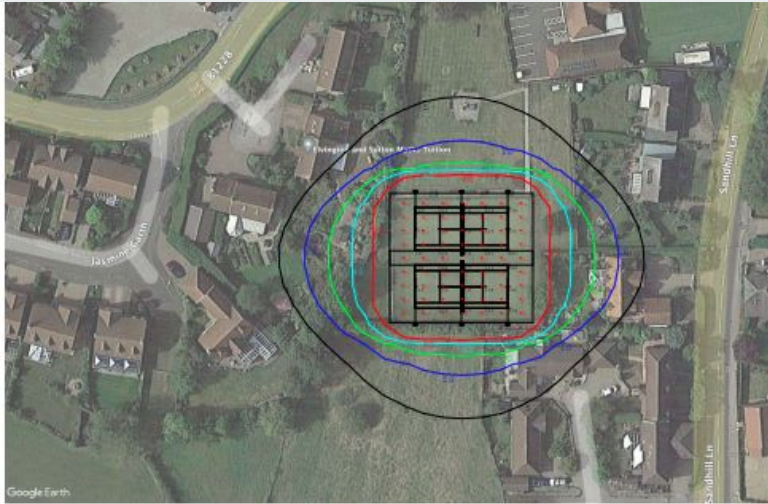
OPTION 1 - COLUMN LIGHTING



Sutton Upon Derwent
Tennis Club



PILLAR LIGHTING - LUX LEVELS



PILLAR LIGHTING - EXAMPLE



Sutton Upon Derwent
Tennis Club

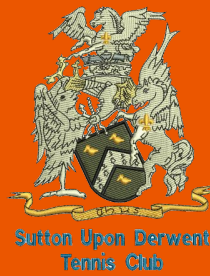


HOW WILL WE MINIMISE IMPACT ON NEIGHBOURS



ISSUE	IMPACT	MITIGATION
Light Spillage	Impact of lighting on neighbours	To include a hood on the lights to reduce light spillage.
Noise	Additional noise from extending use into winter	Curfew at 9.30pm. Club is already open during summer months to similar time
Traffic	Use of the village hall carpark as it currently used,	Encourage walking to club and use of car park
Visual	Impact of lighting columns	Lowest level solution of 12 x 6m, rather than 8 or 10m options

OPTION 2 - LOW LEVEL LIGHTING



TWEENER BY NLX

LED lighting – located on existing fence at 2.75m high



TWEENER BY NLX



Sutton Upon Derwent
Tennis Club



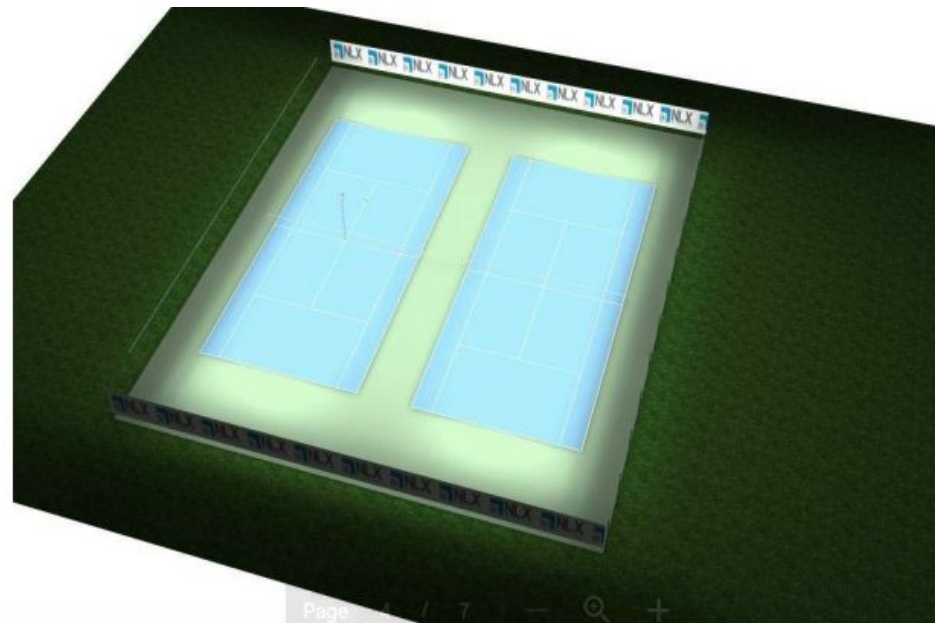
TWEENER® DOUBLE: for lighting 2 tennis courts simultaneously.
These 2 courts must be within the same fence.

- Illumination uniformity factor ≥ 250 lux
- Color Rendering Index > 70
- Glare rate < 50
- Power **3500 W**

TWEENER



Sutton Upon Derwent
Tennis Club



TWEENER LUX LEVELS

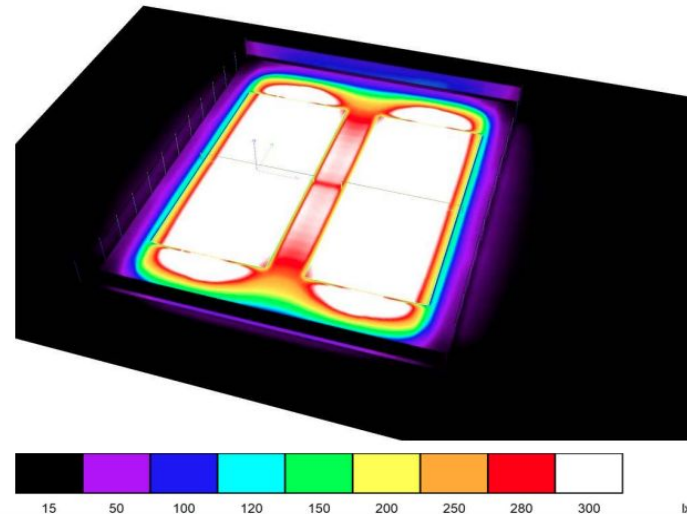


Sutton Upon Derwent
Tennis Club

TWD 36x36m - CE / Tennis 36 m x 18 m - Calculation Grid ITF - Playing Area (PA) /
Value Chart (E, Perpendicular)



Values in Lux, Scale 1 : 197



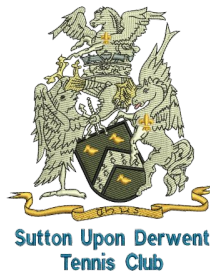
TWEENER SPILLAGE NO PERIMETER SCREENING

SPILLAGE DOUBLE TWEENER



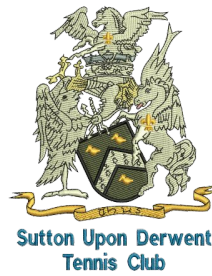
This diagram doesn't take into account any screening, hedges, fencing or trees.

TWEENER SPILLAGE PERIMETER SCREENING



We'd look to put a windbreak/perimeter screening on all four sides of the tennis courts. This will help reduce the already minimal light spillage

TWEENER SPILLAGE PERIMETER SCREENING 85% OBSCURITY



SPILLAGE DOUBLE TWEENER

This diagram shows light spillage with 85% obscurity netting fitted around the full perimeter. Hedges, fences & trees have not been included.



TWEENER - OTHER PHOTOS



Sutton Upon Derwent
Tennis Club



Click the link to see a video of the Tweener System.

<https://www.youtube.com/watch?v=k8SuUQCruUs>

HOW WILL WE MINIMISE IMPACT ON NEIGHBOURS



ISSUE	IMPACT	MITIGATION
Light Spillage	Impact of lighting on neighbours	Minimal due to LED solution and location on fence at 2.75m. Windbreak can further reduce spillage
Noise	Additional noise from extending use into winter	Curfew at 9.30pm. Club is already open during summer months to similar time
Traffic	Use of the village hall carpark as it currently used.	Encourage walking to club and use of car park
Visual	Impact of Tweener System	Fence solution would make Tweener system virtually invisible during day

SUMMARY



Both options would provide sufficient lighting for Class 3 level tennis.

By using a lower LUX level, this reduces light spillage and impact on neighbours

- Option 1- Tennis Pro LED would require 6 x 10 m columns.
- Option 2- Tweener solution would provide a lower level of illumination, but there would be no columns required as located on existing fences at 2.75m high
- For Tweener solution a windbreak net can be fitted behind on fence to further restrict light spillage
- 9.30pm curfew would be in place with a timer connected to the electrics to make it impossible to light after this time.

SUMMARY CONTINUED



- The floodlighting will help employment to a tennis coach for 12 months of year.
- A very rough guide to what coaching may look like, would be the following:
 - MONDAY - Open to any unbooked social play
 - TUESDAY - Advanced Juniors 5pm - 6.30pm
 - WEDNESDAY - Junior coaching 4pm - 7pm, Adult coaching 7pm - 8.30pm
 - THURSDAY - Open to any unbooked social play
 - FRIDAY - Junior coaching 4pm - 7pm
 - SATURDAY - Open to any unbooked social play
 - SUNDAY - Open to any unbooked social play

This is very similar to what is currently offered in summer. The courts would also be available to the public to pay and play, which would also help with the club's income.



GOING FORWARD

COMMITTEE MEMBER CONTACTS

Alex Patient - alexpatient@gmail.com

Matt Ward - mwdigitalyorkshire@gmail.com

Chris Hobson - chrishobson@farmline.com

George Hobson - info@georgehobson.co.uk

- We favour going ahead with the Tweener system due to it being the most sensitive floodlight option for neighbours and it's almost invisible throughout the day. Aswell as being the most cost effective.
- Early 2024 we'll looking to submit a planning application.
- We welcome any questions to be emailed to us. Alternatively you can reach out to one of the committee members, their email address is to the left.

tennis@suttontennisclub.co.uk

